

CSBC & DRC Meeting

April 05, 2016

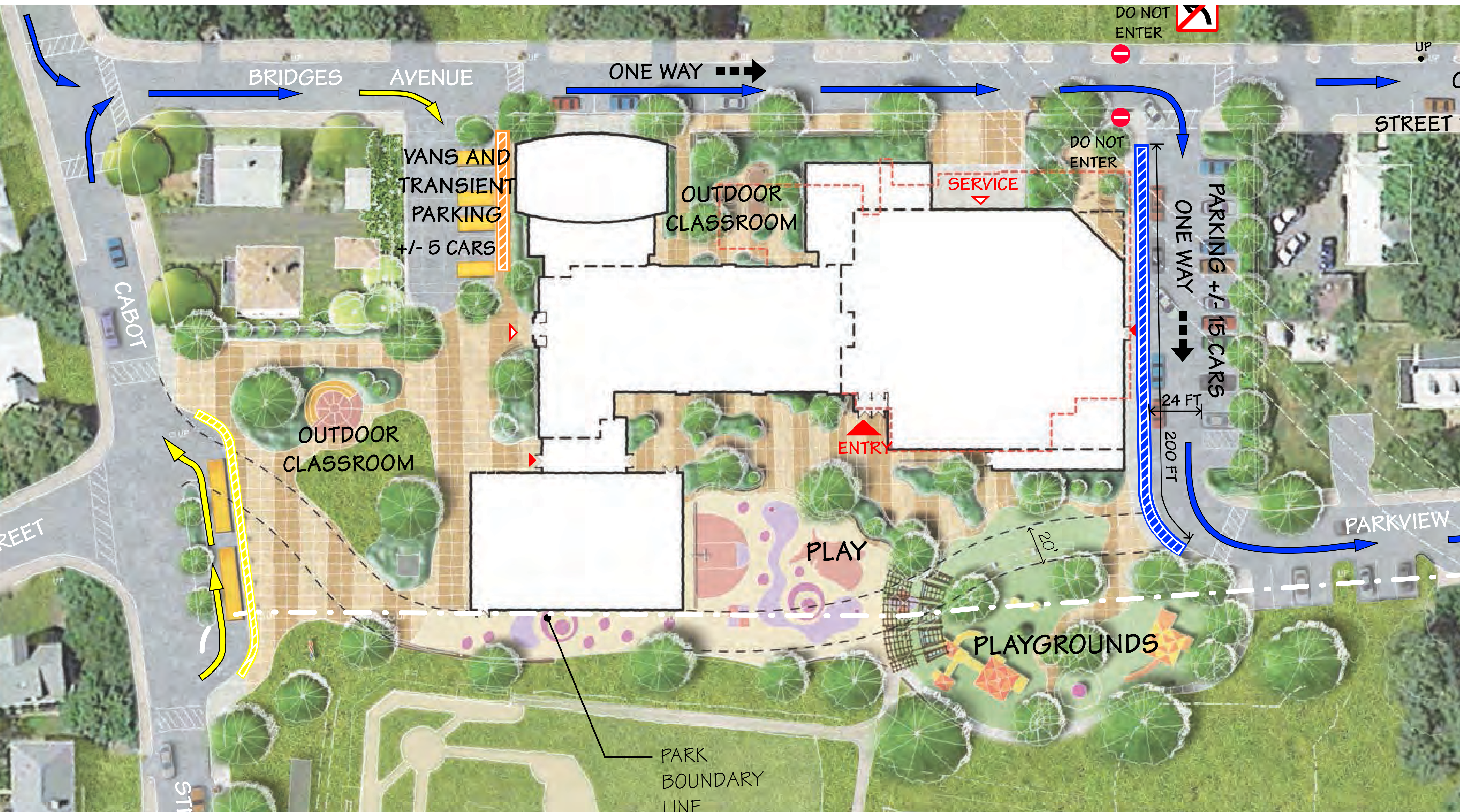
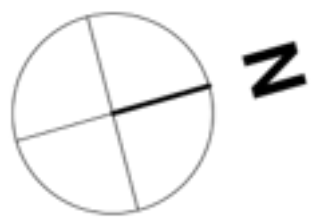


Cabot School

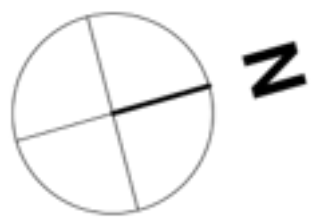
NV5

DiNisco Design
PARTNERSHIP

Site Plan | Concept 4 Refinement

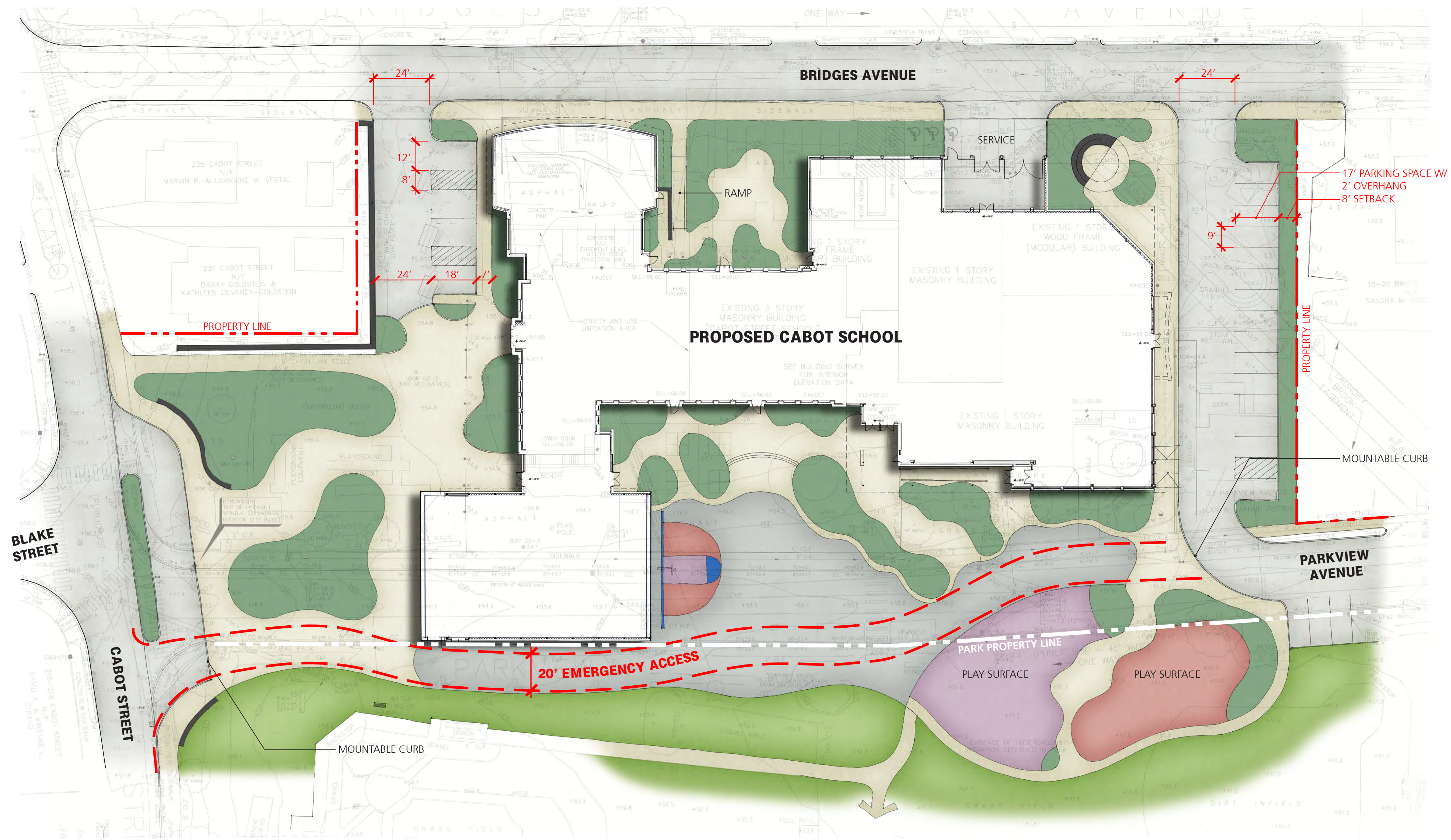


Site Plan | Parking Count



PARKING COUNT	
PARKING LOT (NORTH)	+/- 15
PARKING LOT (SOUTH)	+/- 04
BRIDGES AVE	+/- 15
PARKVIEW AVE	+/- 22
EAST SIDE PARKWAY	+/- 28
<hr/>	
SUBTOTAL	+/- 80-84
CABOT VILLAGE	+/- 16-20
<hr/>	
TOTAL	+/- 96-104

Site Plan | Concept 4 Refinement



Perspective | Concept 4.1

Gym Moved 10' South



Perspective | Concept 4.2

Gym Moved 20' South



Perspective | Concept 4.3

Gym Moved to Cabot St.



Perspective | Concept 4.4

Gym Rotated 90°



Perspective | Concept 4.1

Gym Moved 10' South



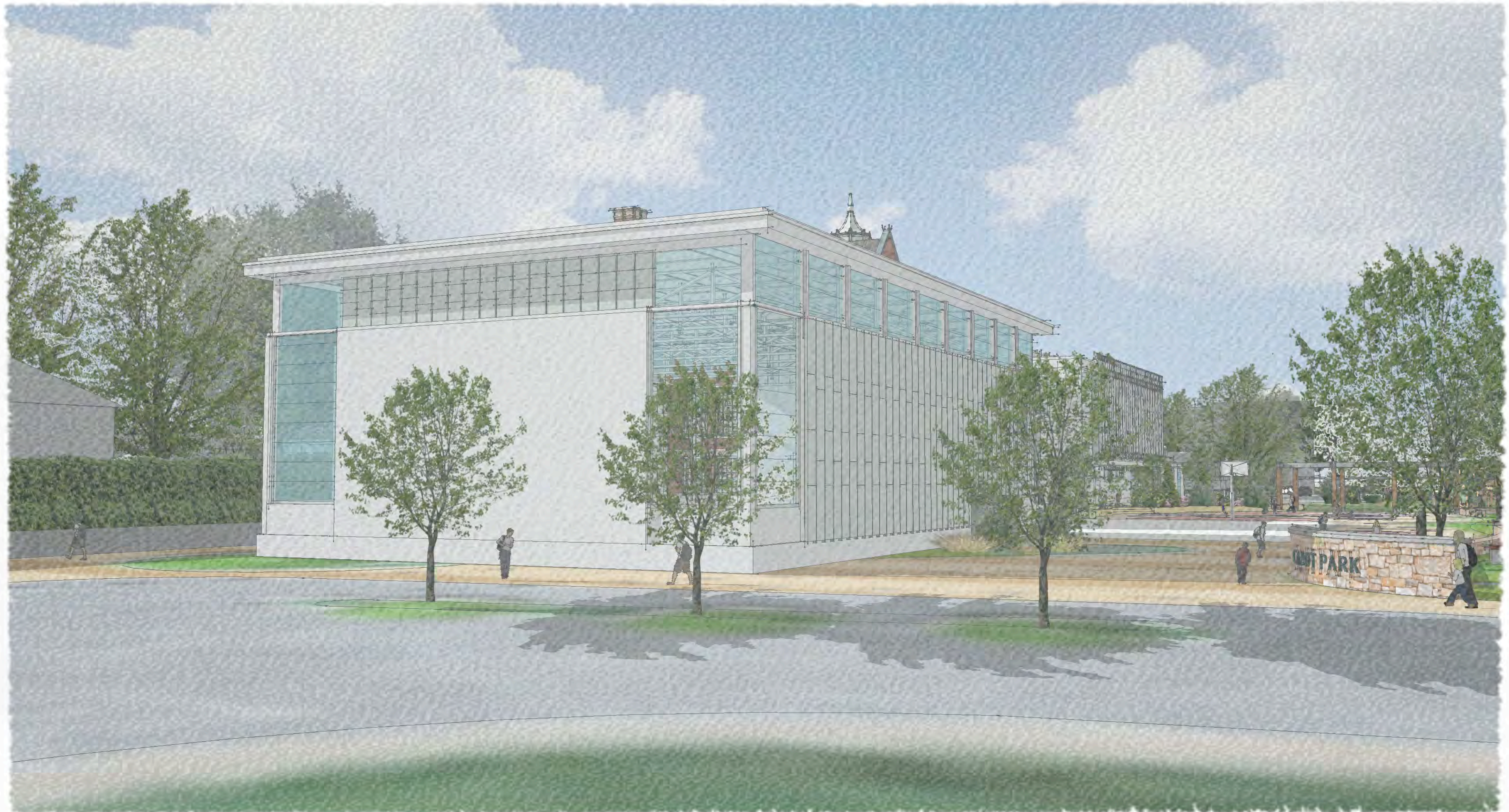
Perspective | Concept 4.2

Gym Moved 20' South



Perspective | Concept 4.3

Gym Moved to Cabot St.



Perspective | Concept 4.4

Gym Rotated 90°



Perspective | Concept 4.1

Gym Moved 10' South



Perspective | Concept 4.2

Gym Moved 20' South



Perspective | Concept 4.3

Gym Moved to Cabot St.



Perspective | Concept 4.4

Gym Rotated 90°



Perspective | Concept 4.1

Gym Moved 10' South



Perspective | Concept 4.2

Gym Moved 20' South



Perspective | Concept 4.3

Gym Moved to Cabot St.

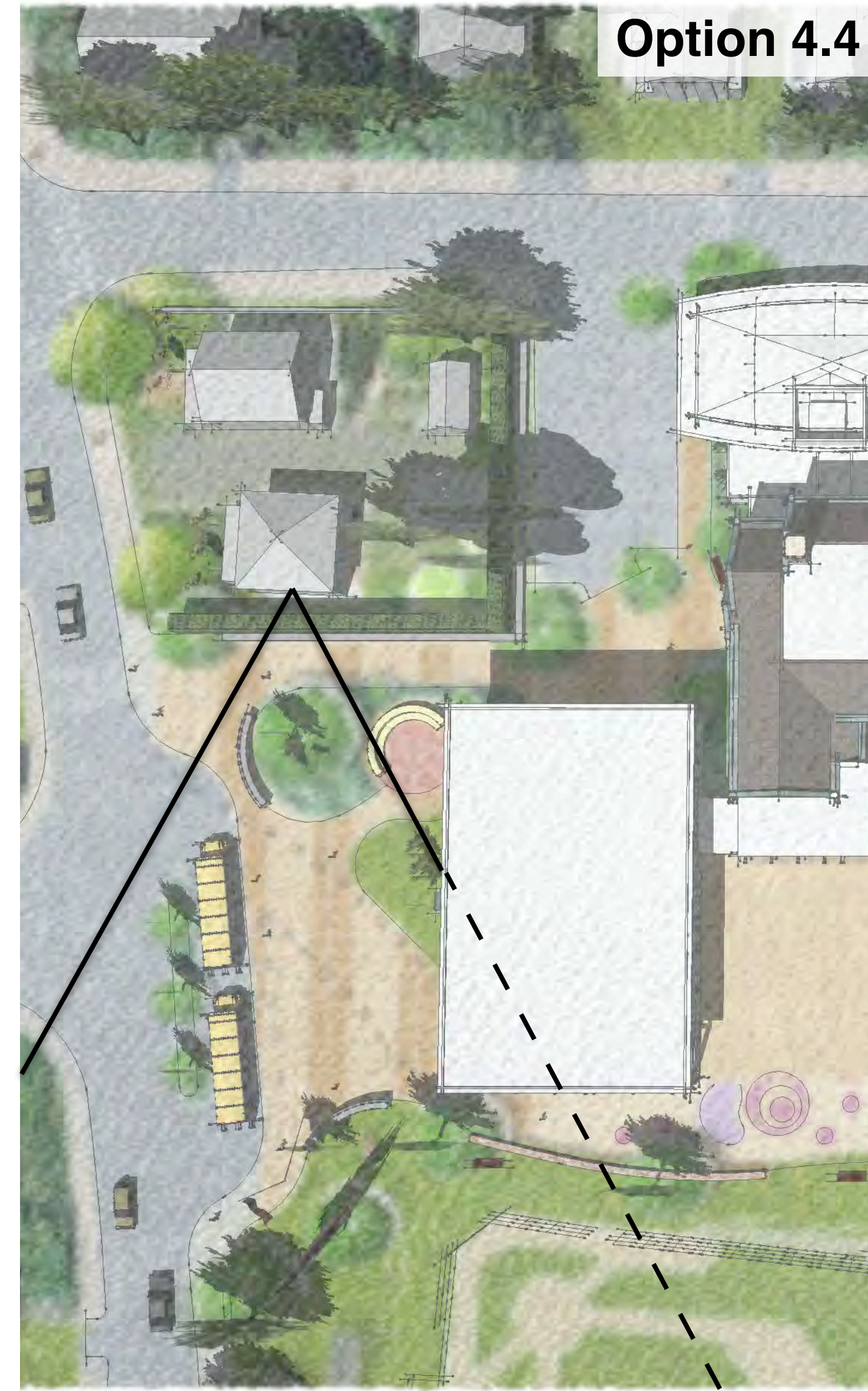
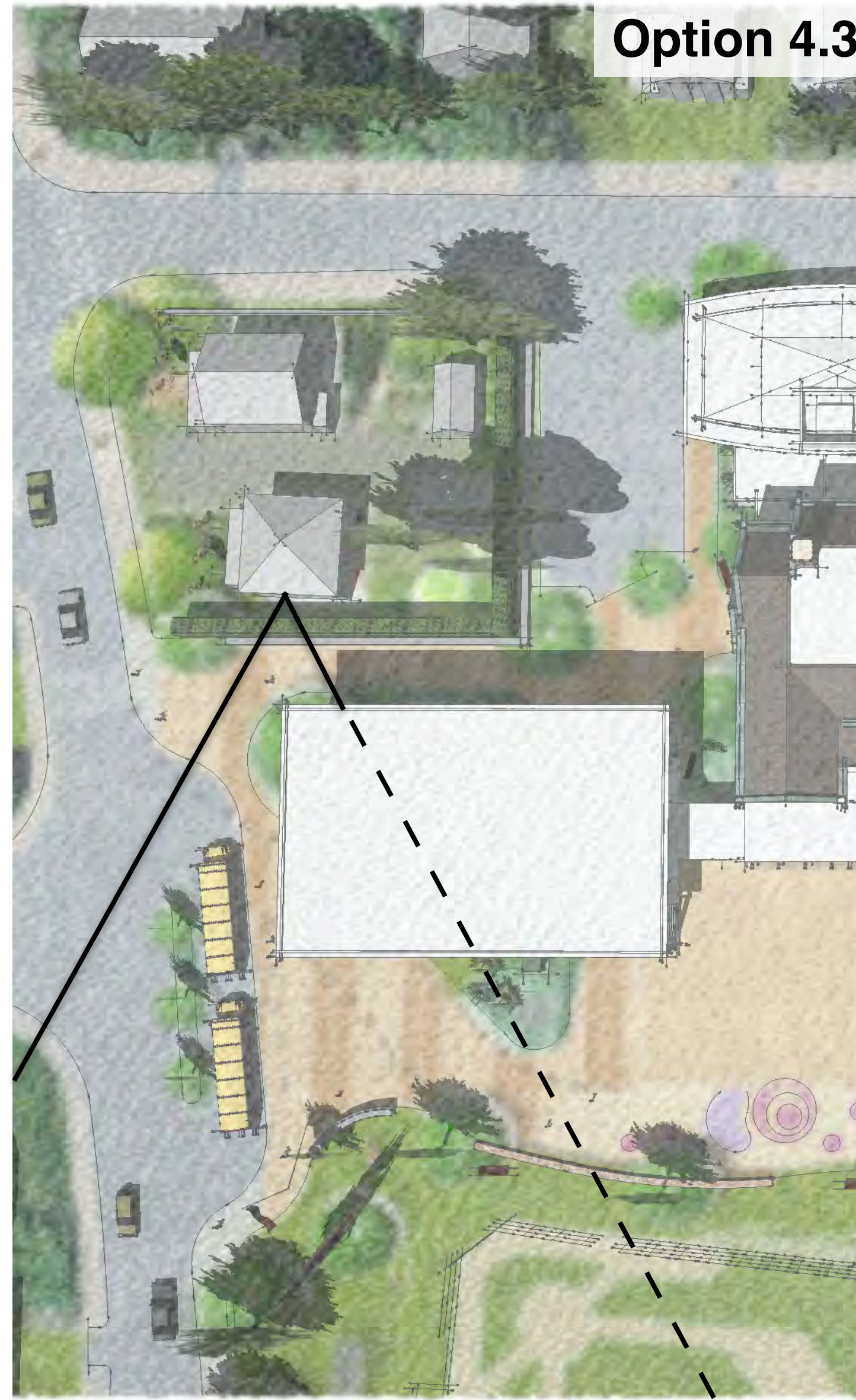


Perspective | Concept 4.4

Gym Rotated 90°



View from 231 Cabot Street



Sun Study | Summer Solstice



Sun Study | Spring & Fall Equinox

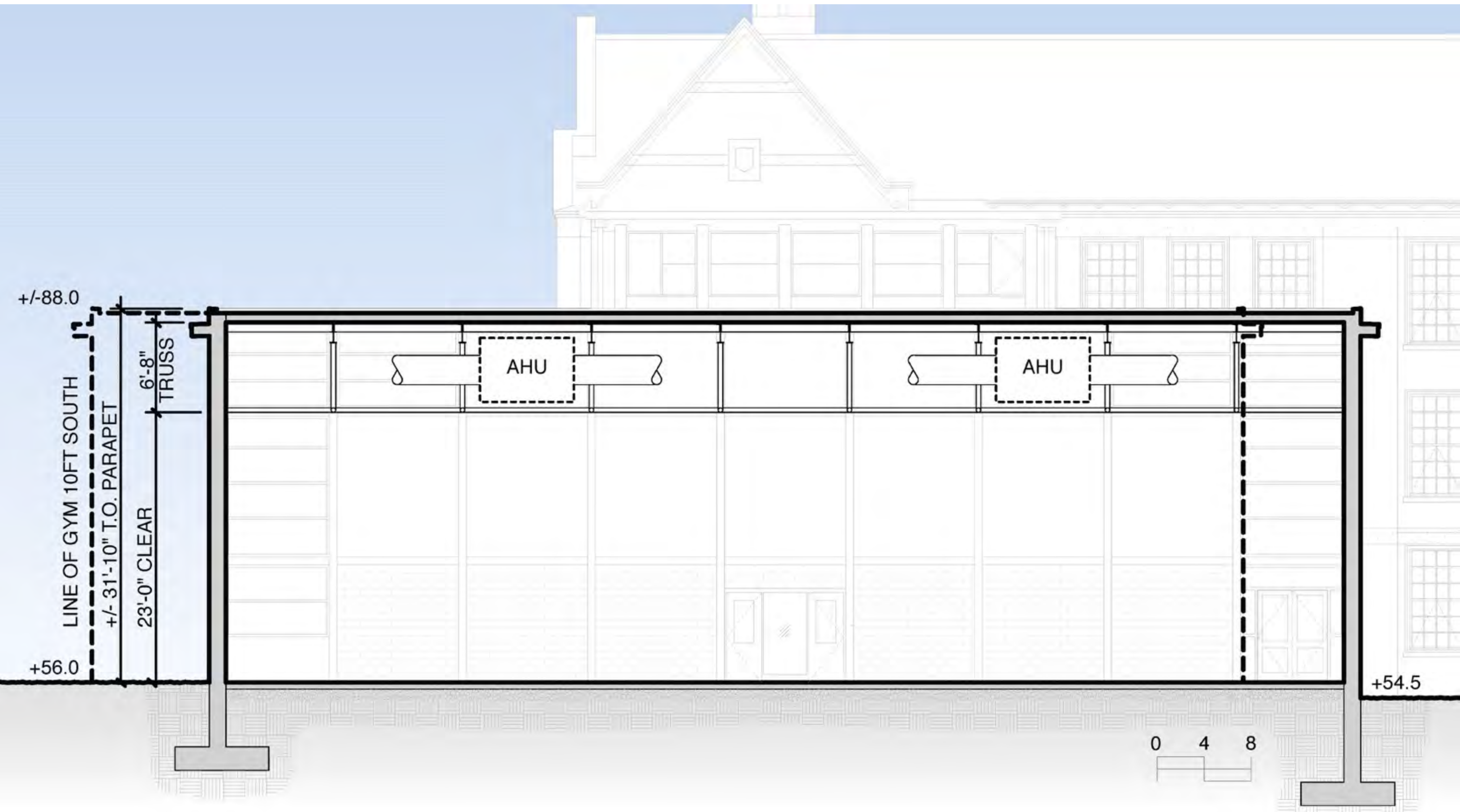


Sun Study | Winter Solstice



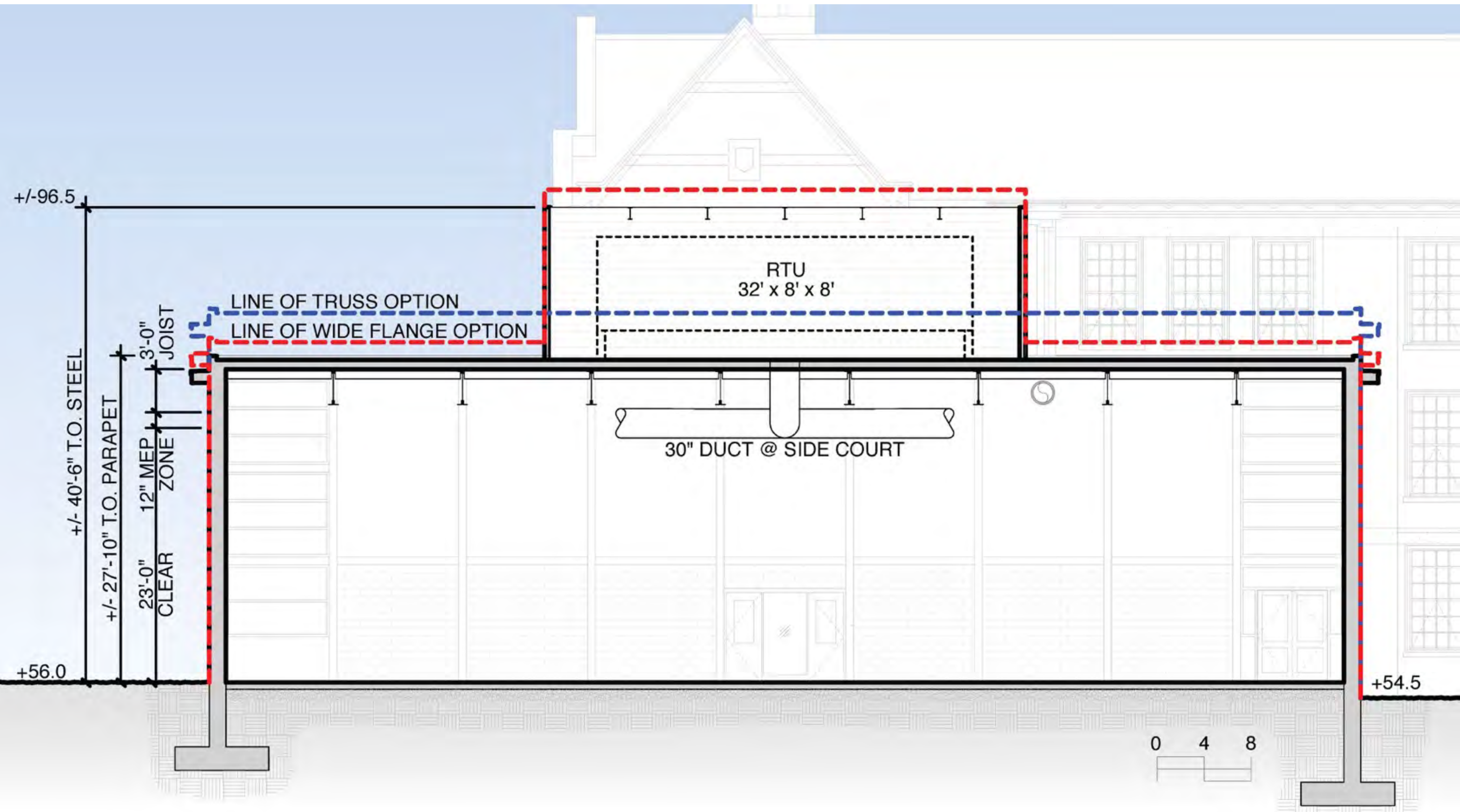
Gymnasium Section

Trusses & AHUs Inside Gym



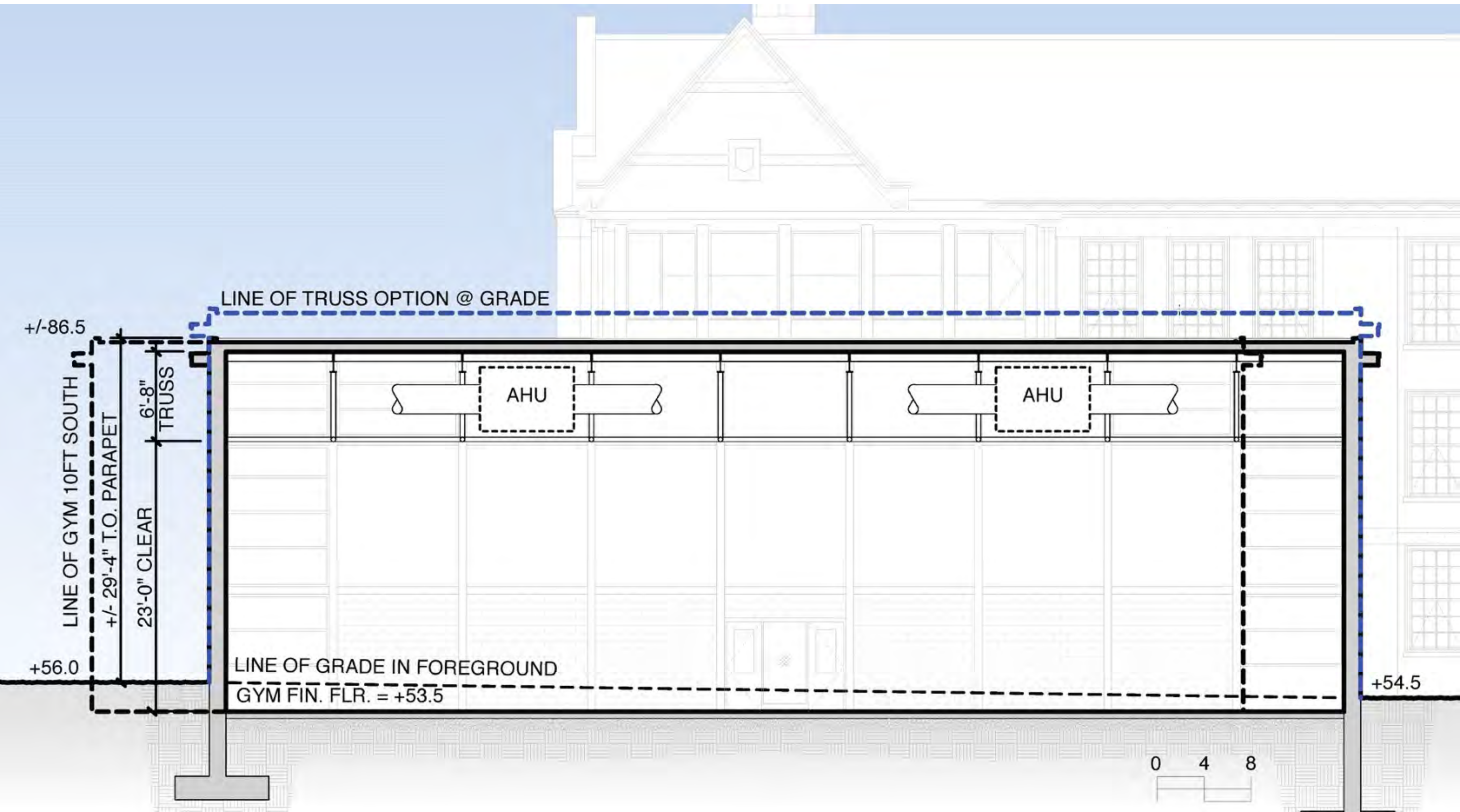
Gymnasium Section

Joists & AHUs on Roof



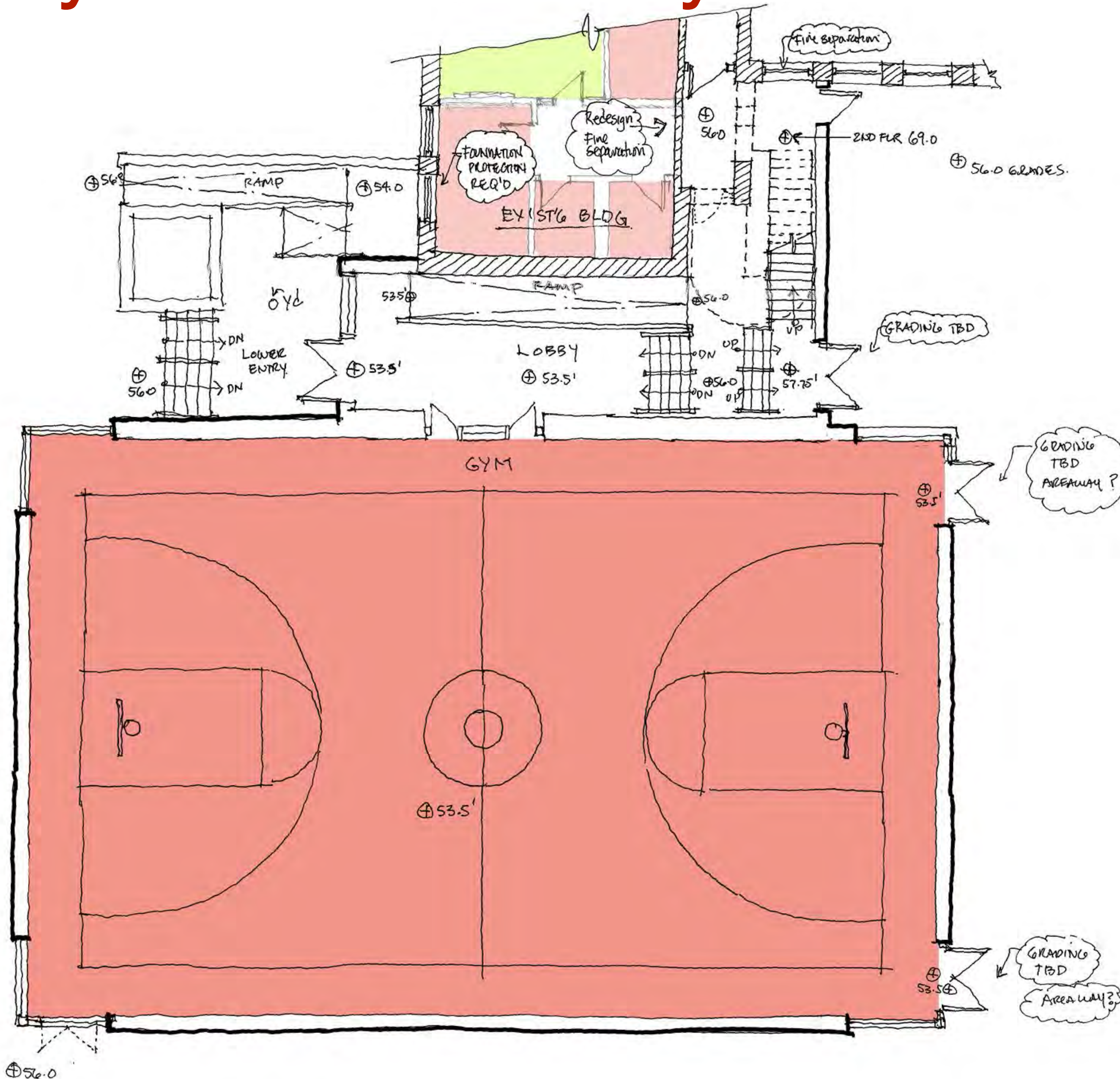
Gymnasium Study

Floor Depressed 30"



Gymnasium Study

Floor Depressed 30"

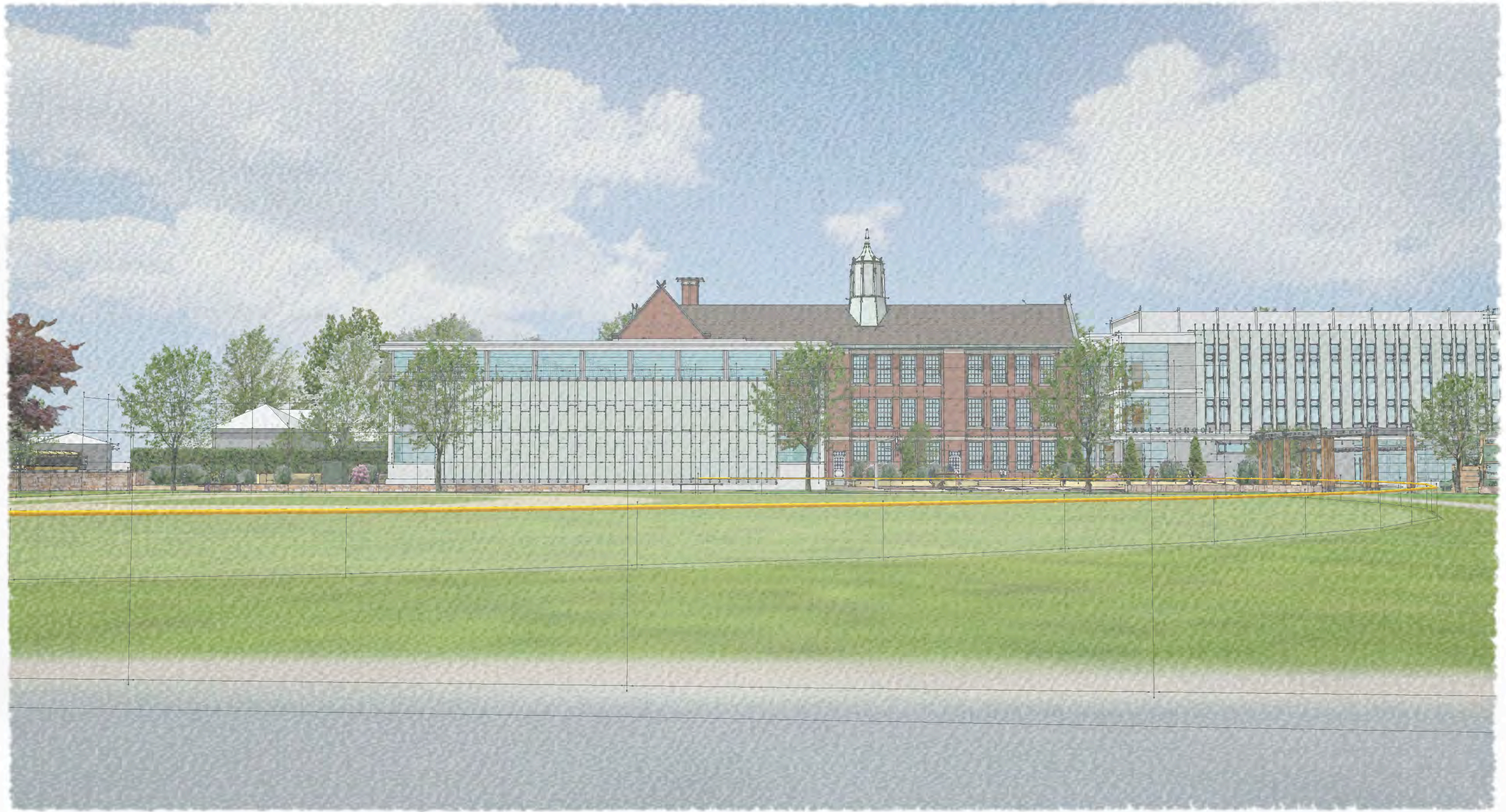


Challenges:

- Additional floor area
- Additional foundation work
- Additional waterproofing
- Additional demolition scope
- Additional excavation scope
- Decreased accessibility & usability
- Difficult access for gym equipment
- Grading & drainage issues
- Snow & water collection issues
- Areaways (additional maintenance)

Perspective

Stair Clerestory from Eastside Parkway



Perspective

Cabot Street Entry w/ Gym AHU



Perspective

View North on Parkview Ave. w/ Gym AHU

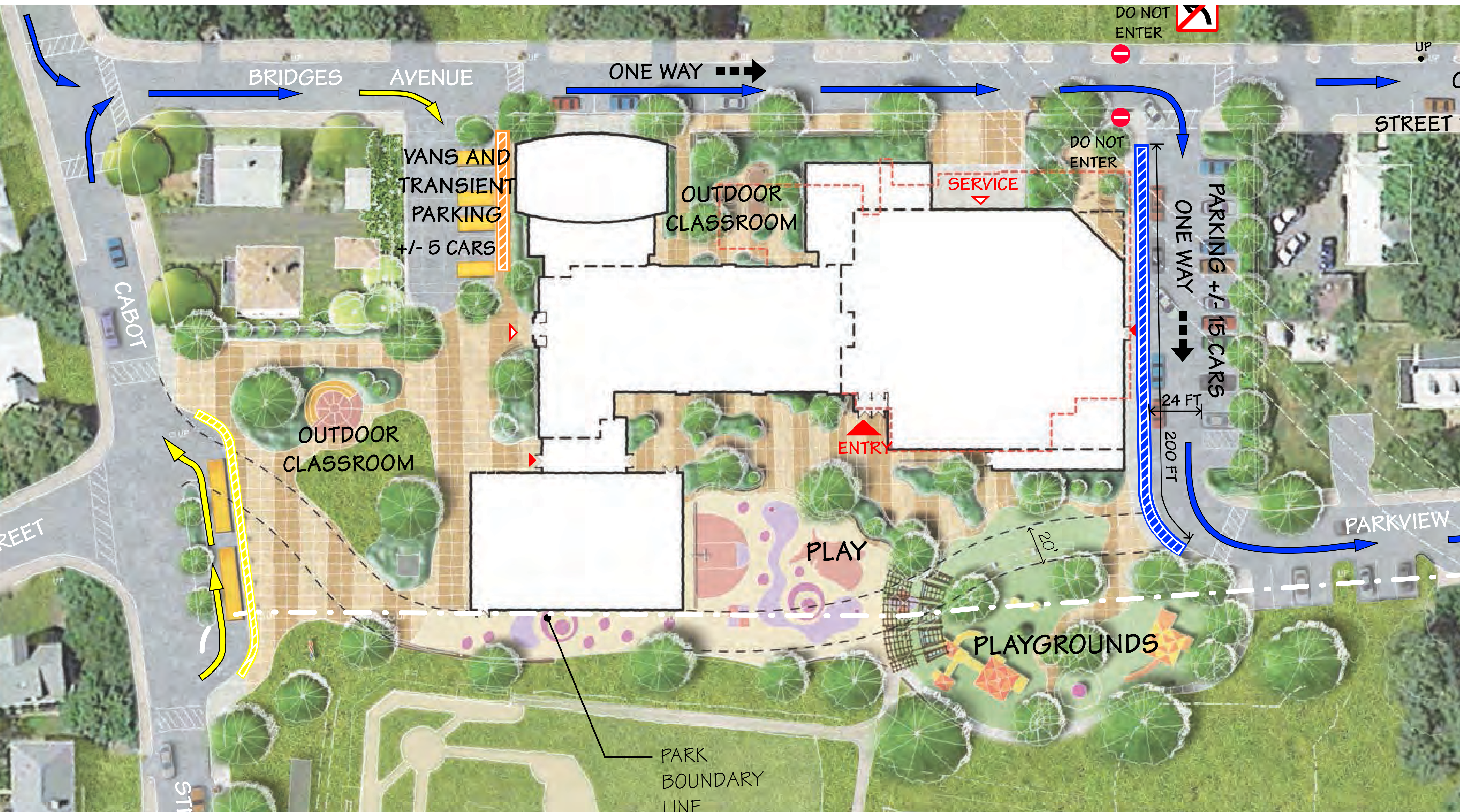
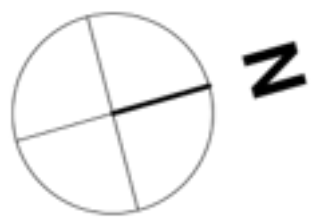


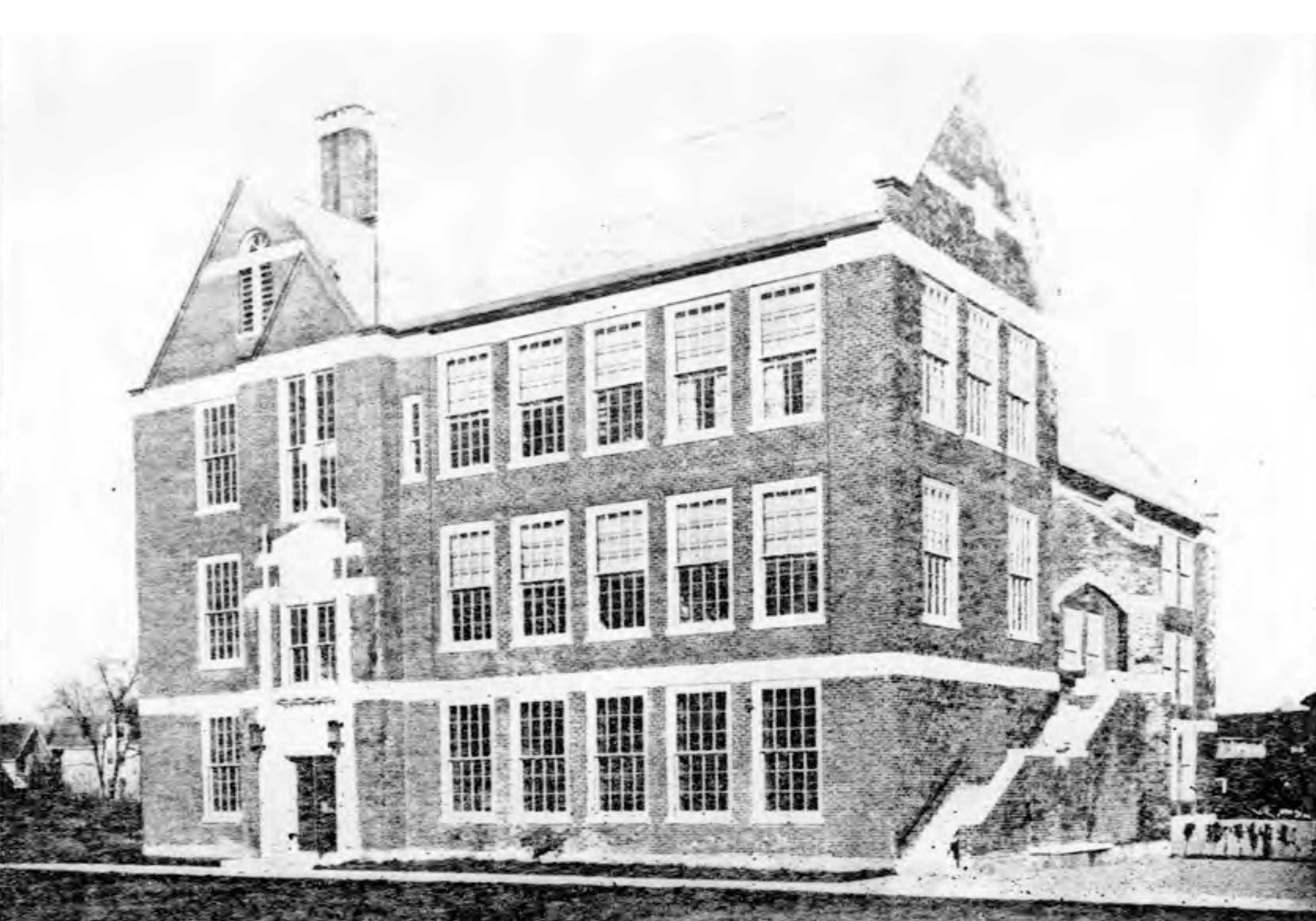
Perspective

View from Cabot Park w/ Gym AHU



Site Plan | Concept 4 Refinement





CSBC & DRC Meeting

April 05, 2016



Cabot School

NV5

DiNisco Design
PARTNERSHIP