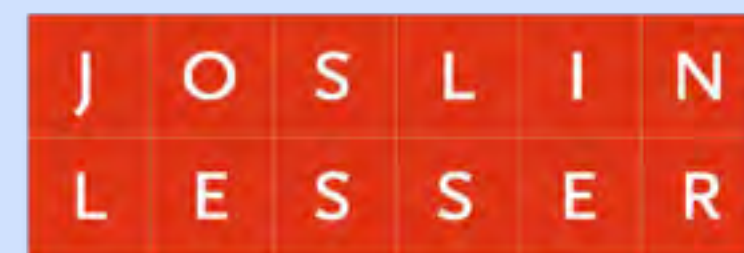


DRT Meeting

March 23, 2016



Cabot School



Project Management
An N|V|5 Company

DiNisco Design
PARTNERSHIP

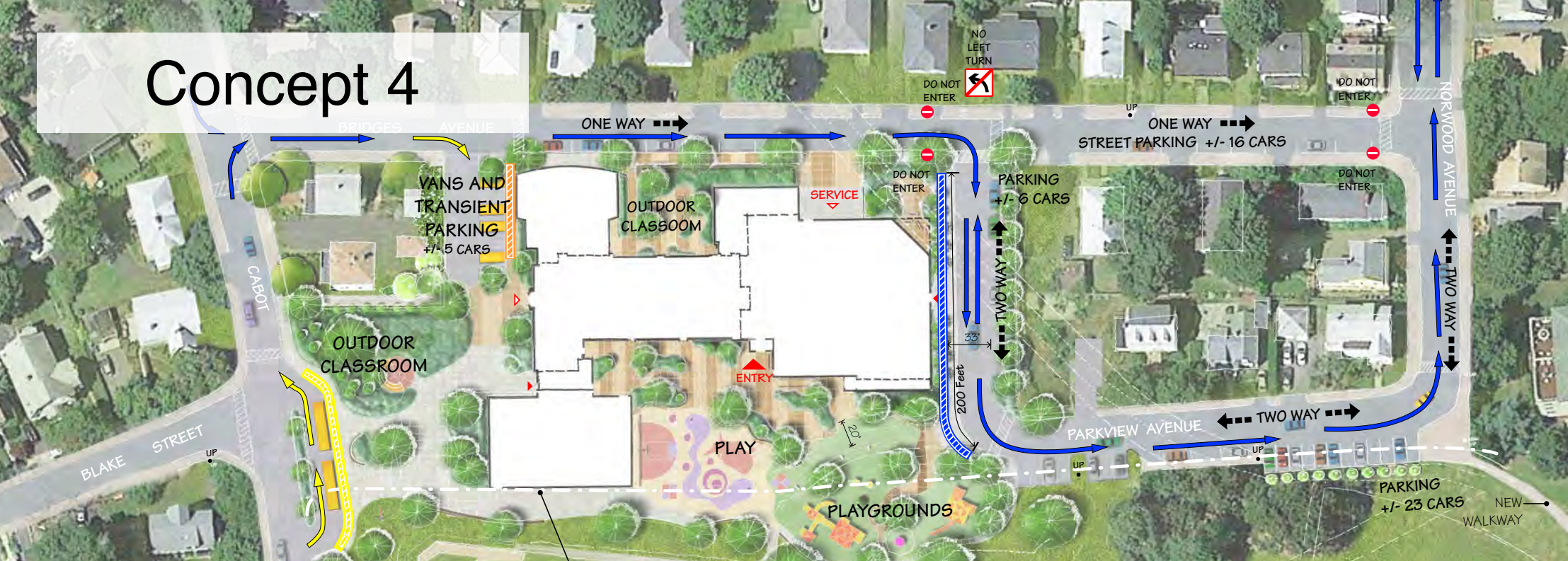
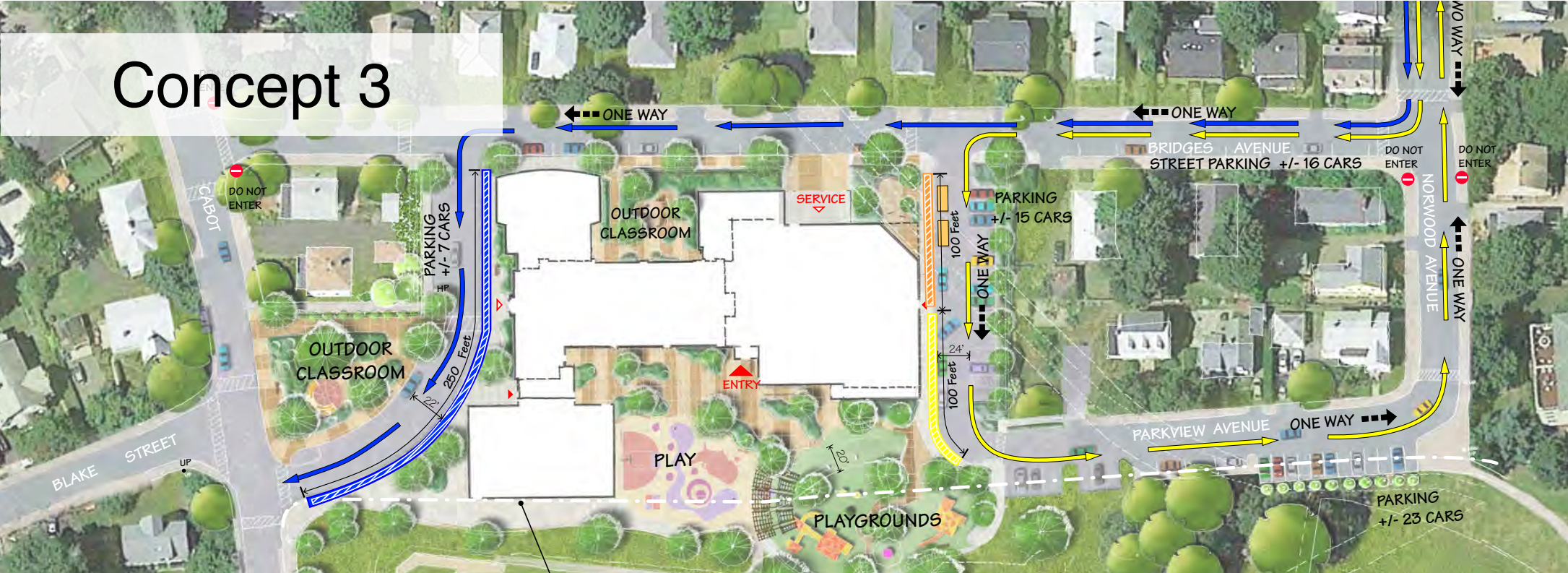
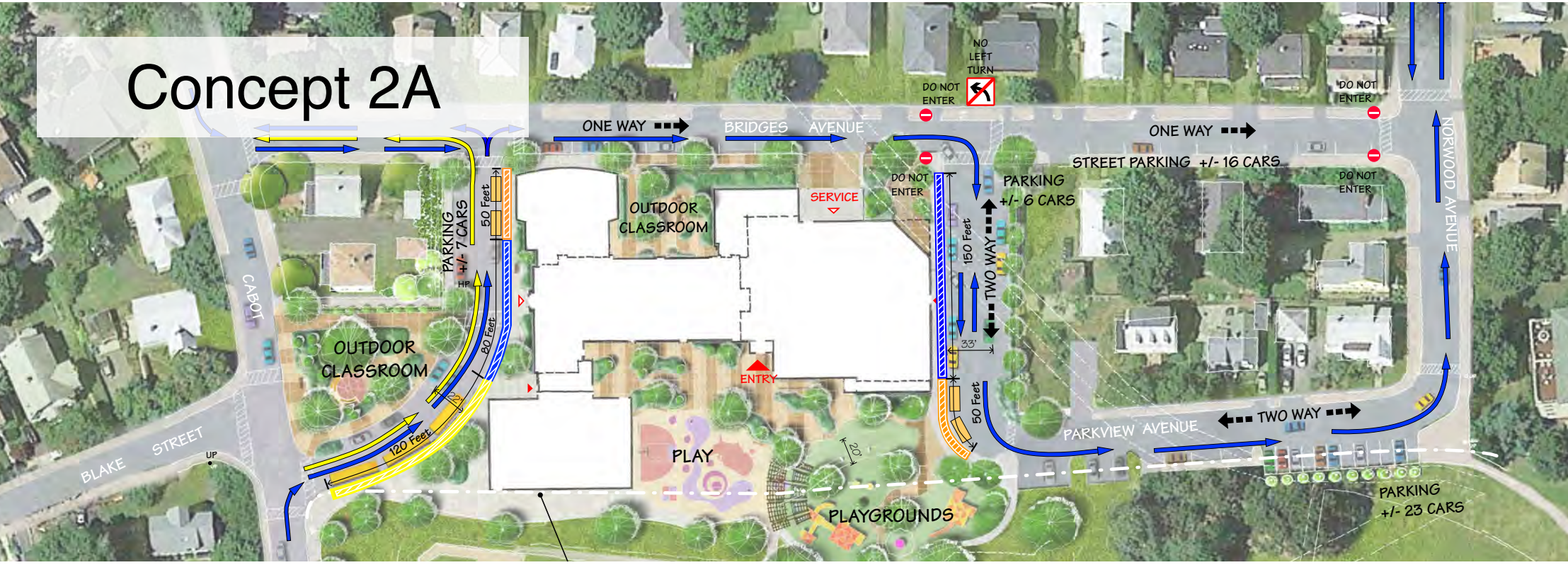
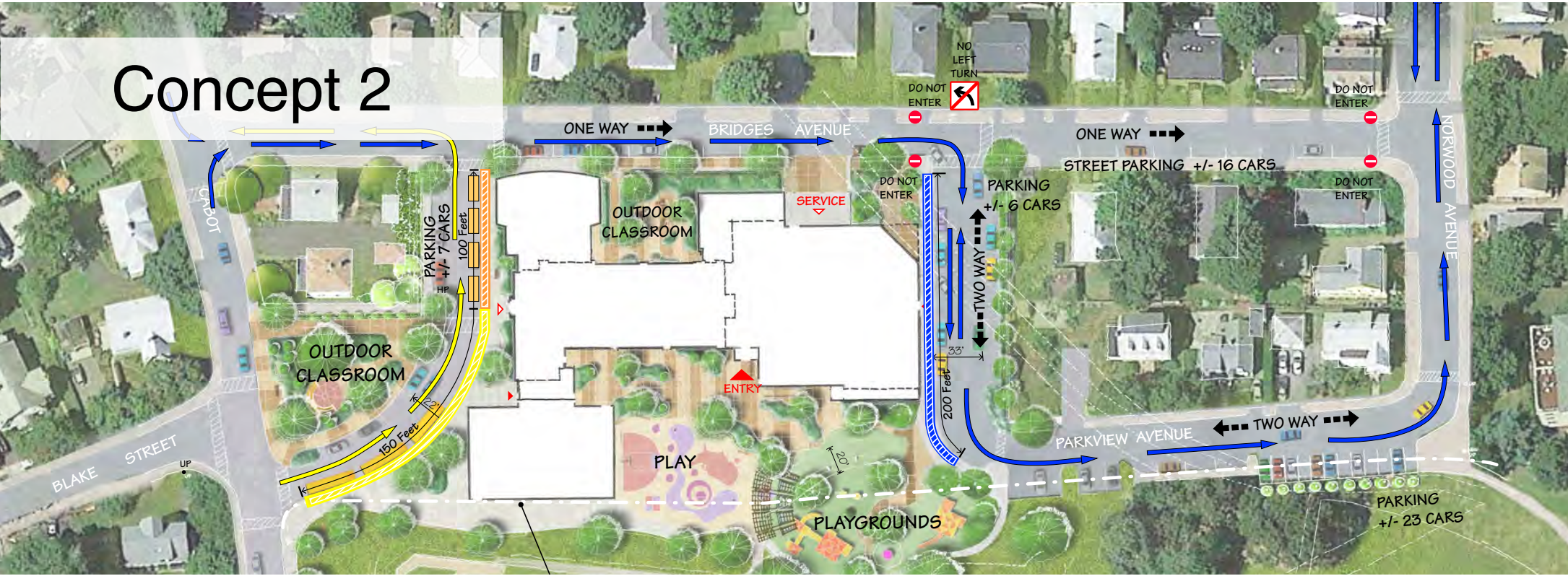
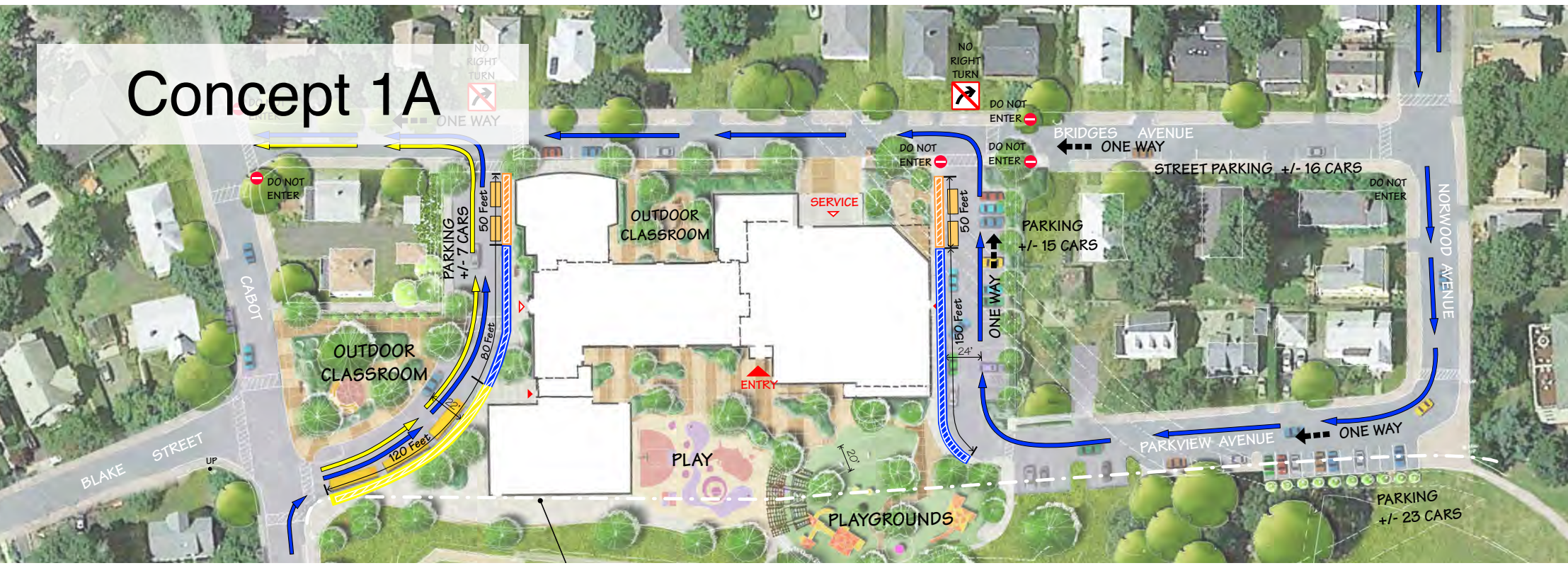
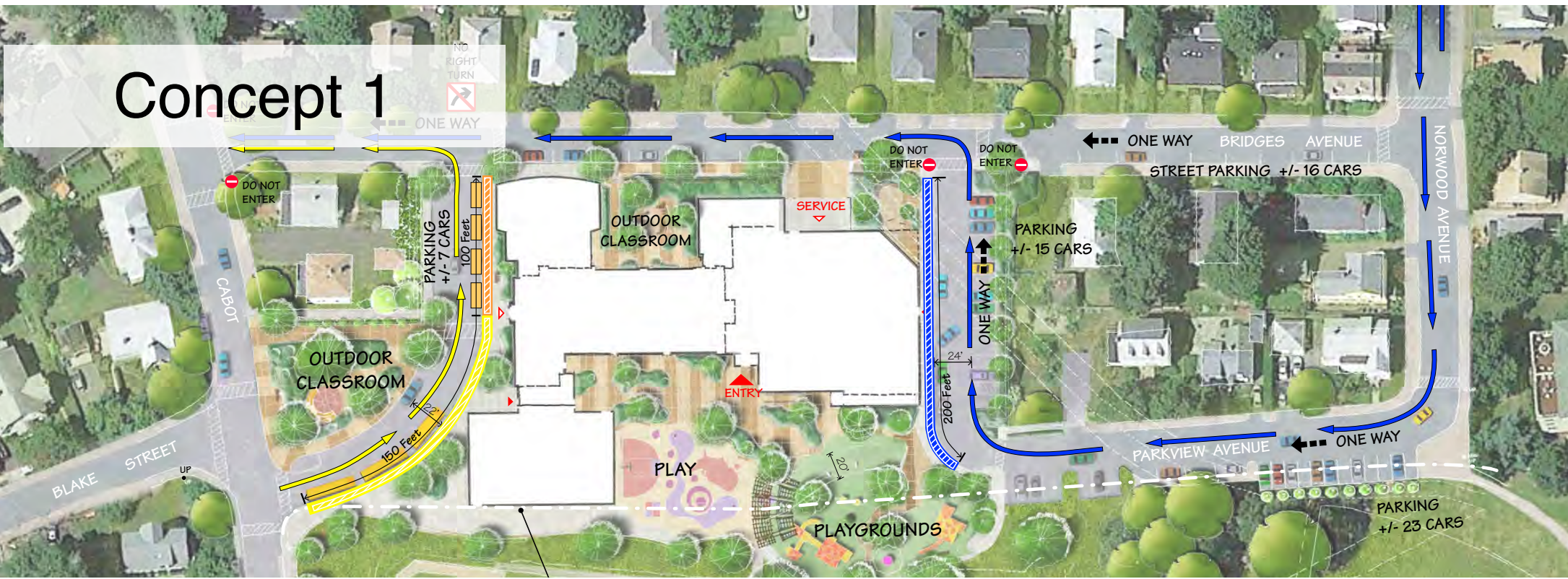
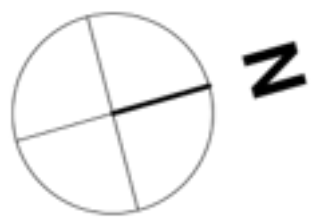
20+ Design Options

Renovation-Addition

New Construction



Traffic Circulation | Recap



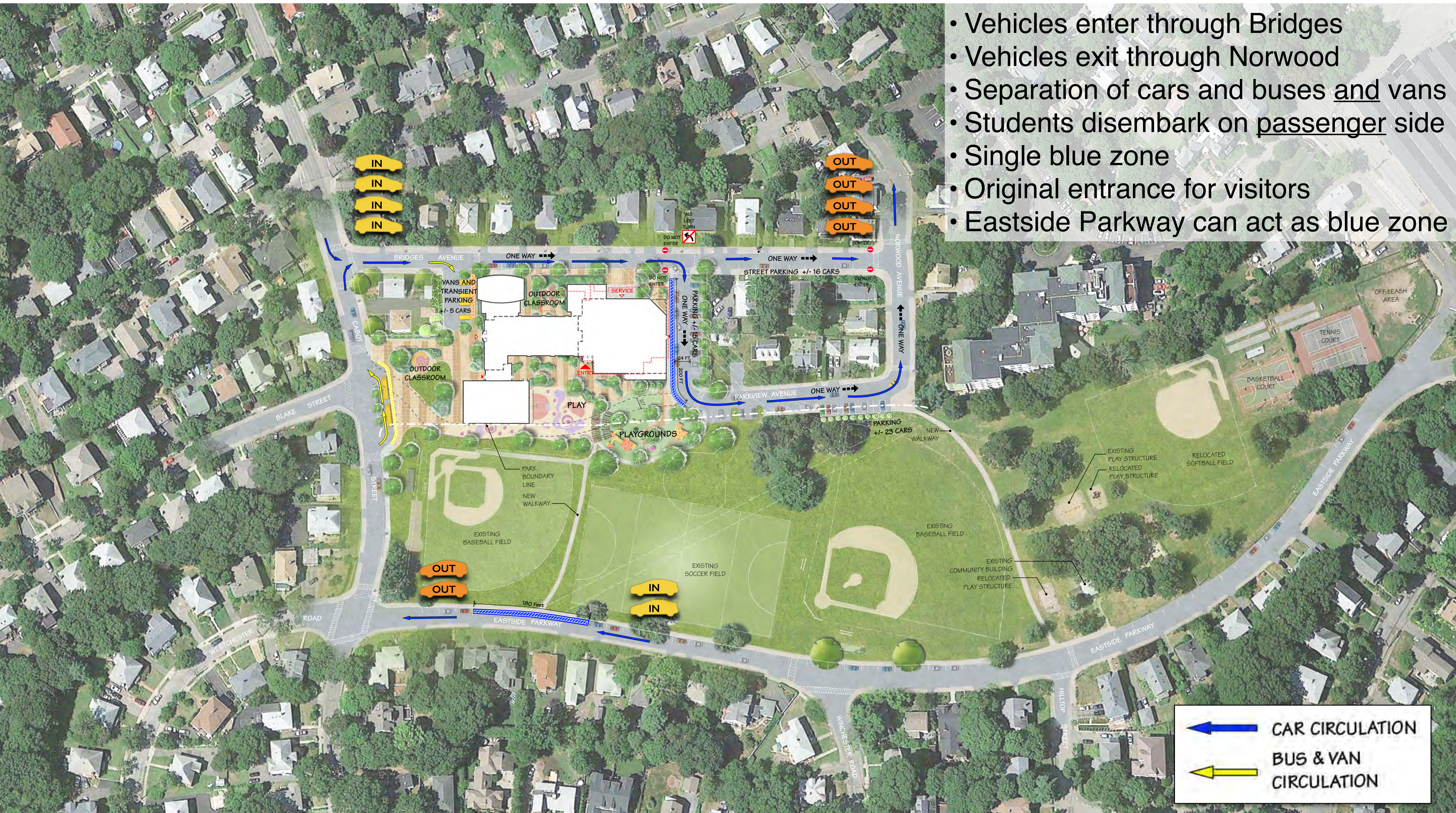
Site Plan | Concept 4 Refinement



Traffic Circulation | Concept 4



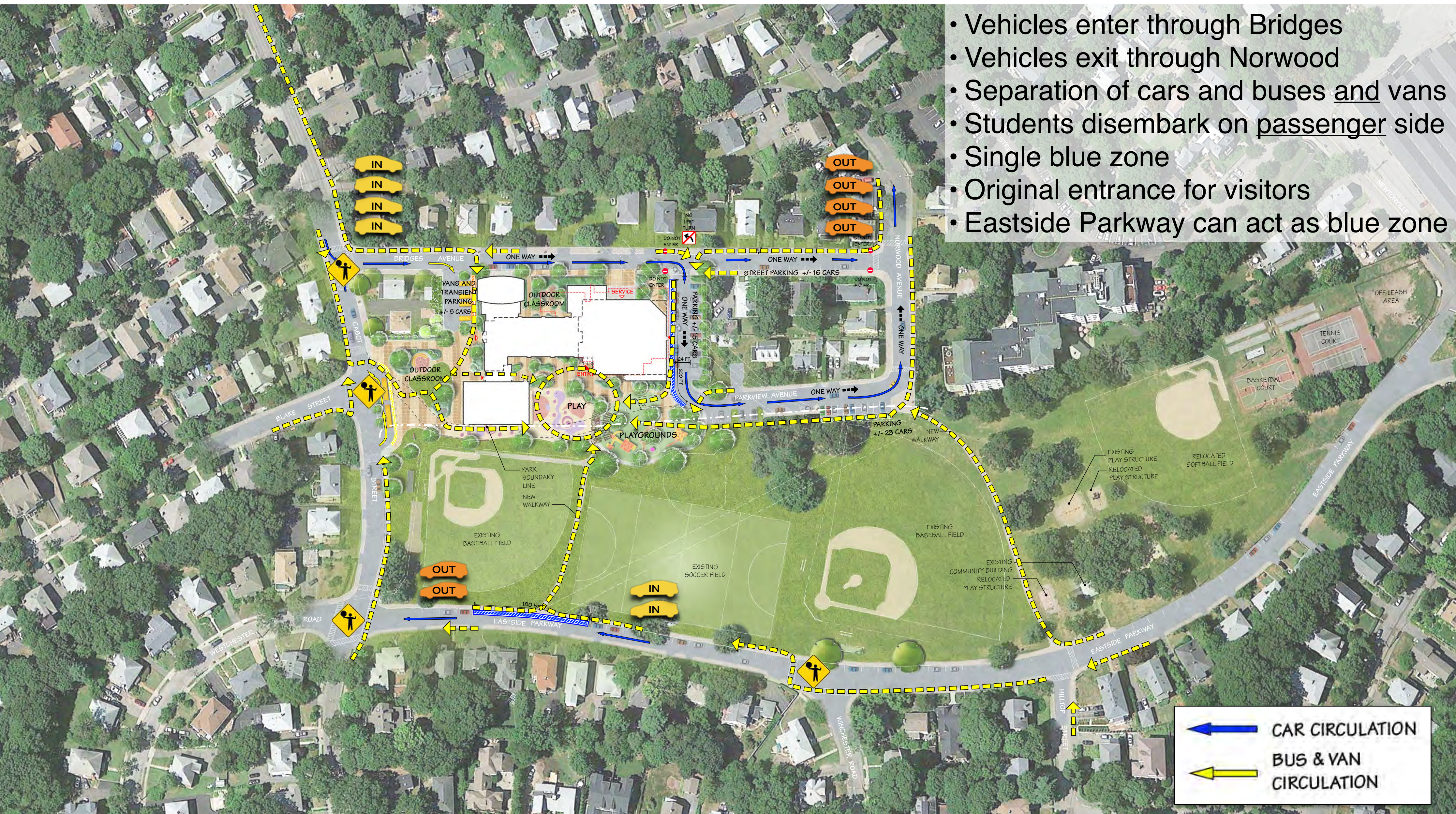
- Vehicles enter through Bridges
- Vehicles exit through Norwood
- Separation of cars and buses and vans
- Students disembark on passenger side
- Single blue zone
- Original entrance for visitors
- Eastside Parkway can act as blue zone



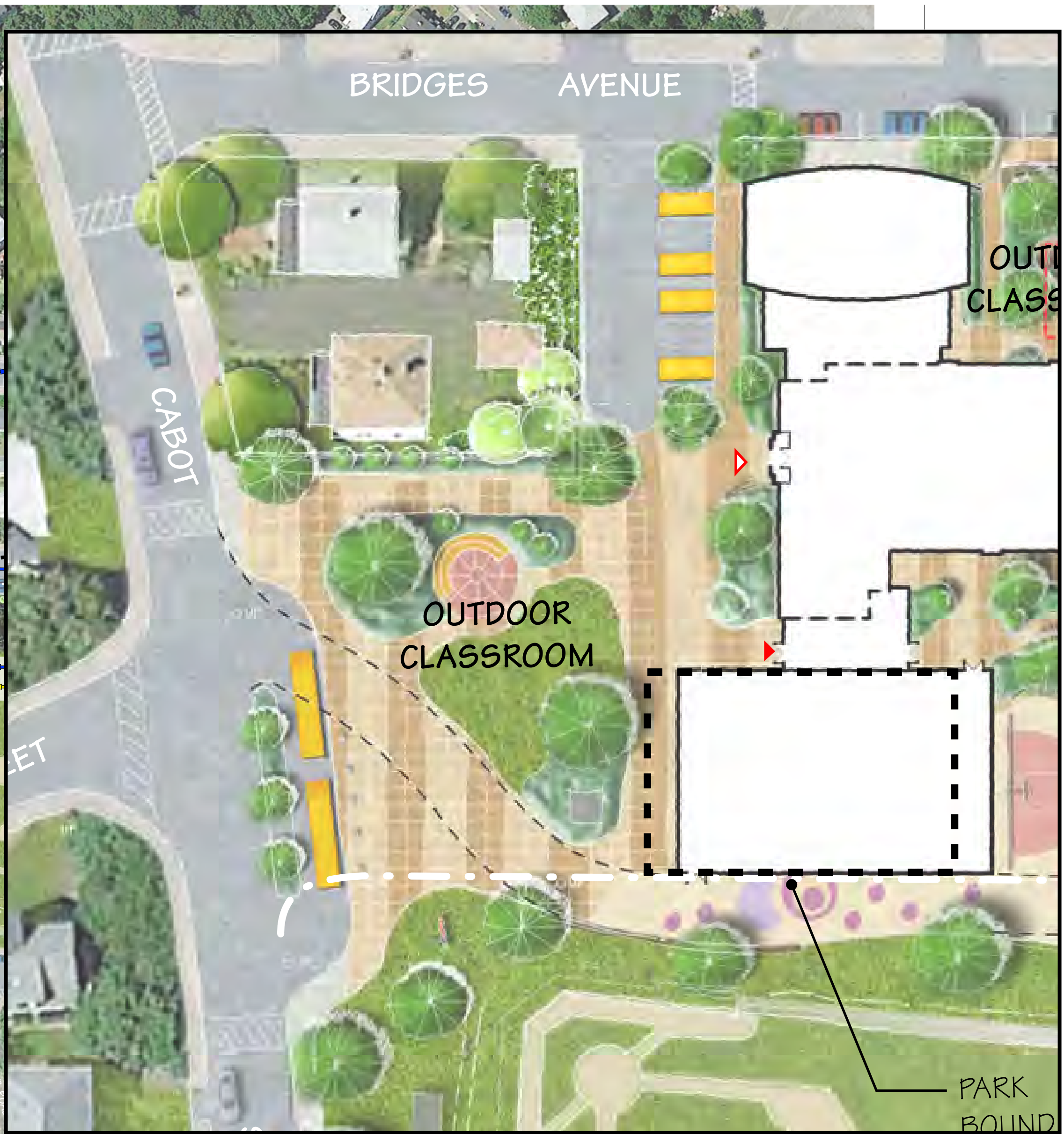
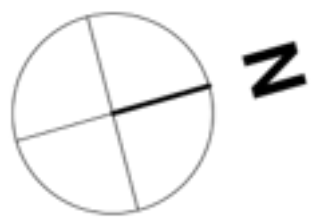
Traffic Circulation | Concept 4



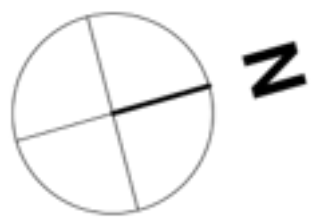
- Vehicles enter through Bridges
- Vehicles exit through Norwood
- Separation of cars and buses and vans
- Students disembark on passenger side
- Single blue zone
- Original entrance for visitors
- Eastside Parkway can act as blue zone



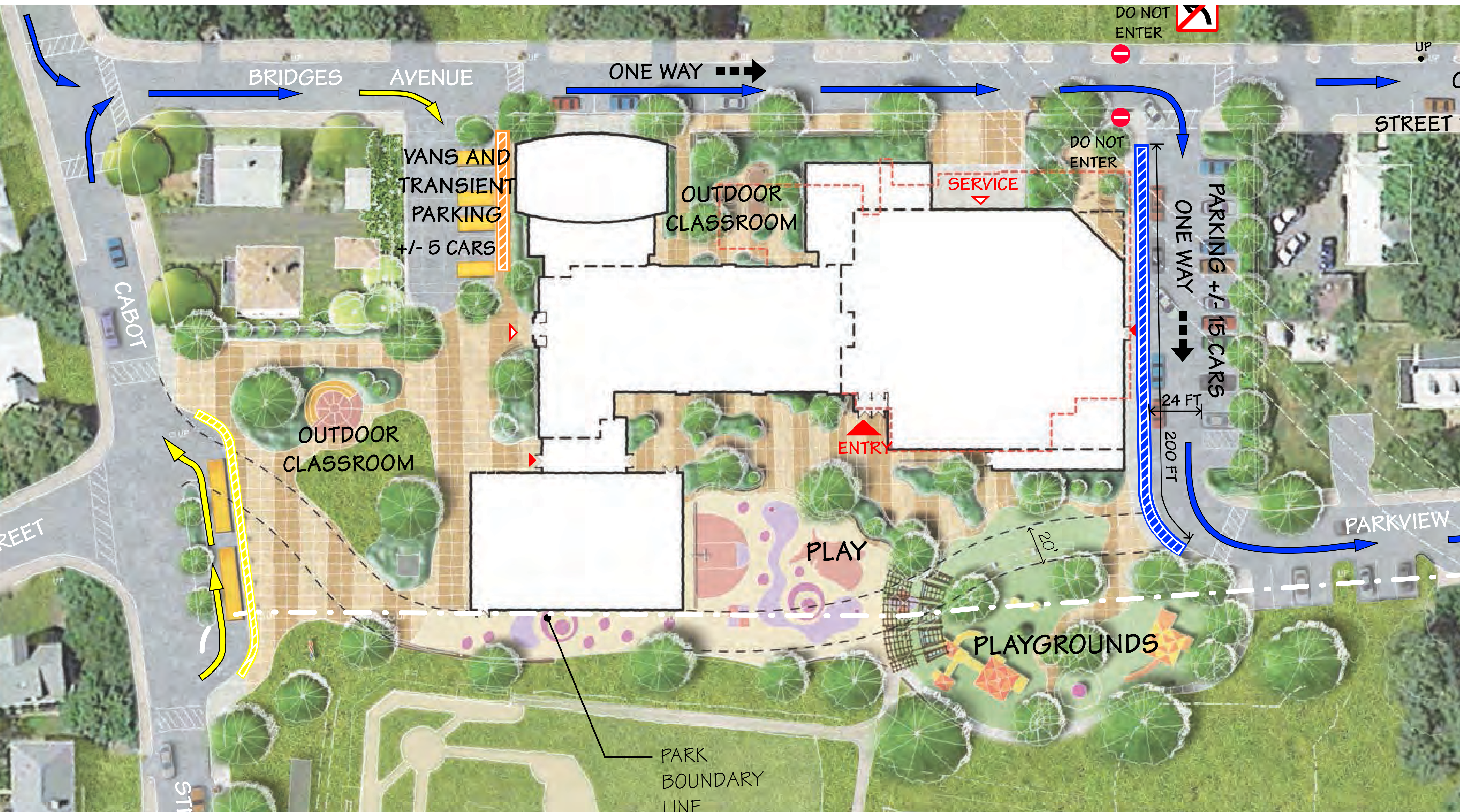
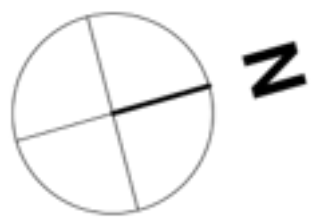
Site Plan | Concept 4 Refinement



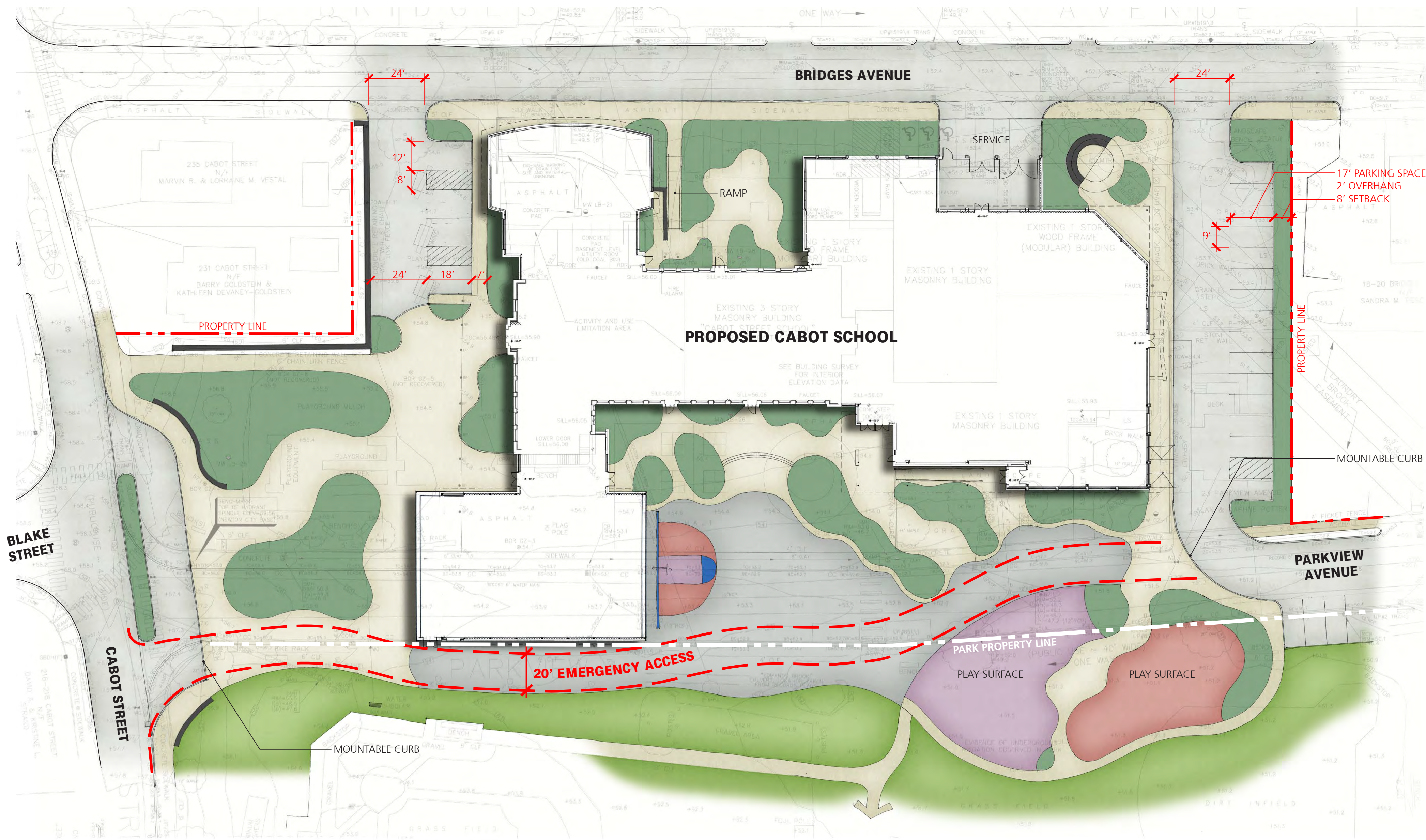
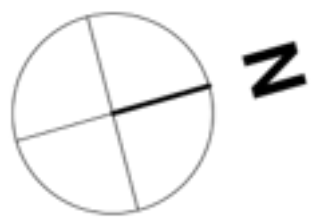
Site Plan | Concept 4 Refinement



Site Plan | Concept 4 Refinement



Site Plan | Concept 4 Refinement



Perspective | Concept 4.1

Gym Moved 10' South



Perspective | Concept 4.1

Gym Moved 10' South



Perspective | Concept 4.1

Gym Moved 10' South



Perspective | Concept 4.1

Gym Moved 10' South



Perspective | Concept 4.2

Gym Moved 20' South



Perspective | Concept 4.2

Gym Moved 20' South



Perspective | Concept 4.2

Gym Moved 20' South



Perspective | Concept 4.2

Gym Moved 20' South



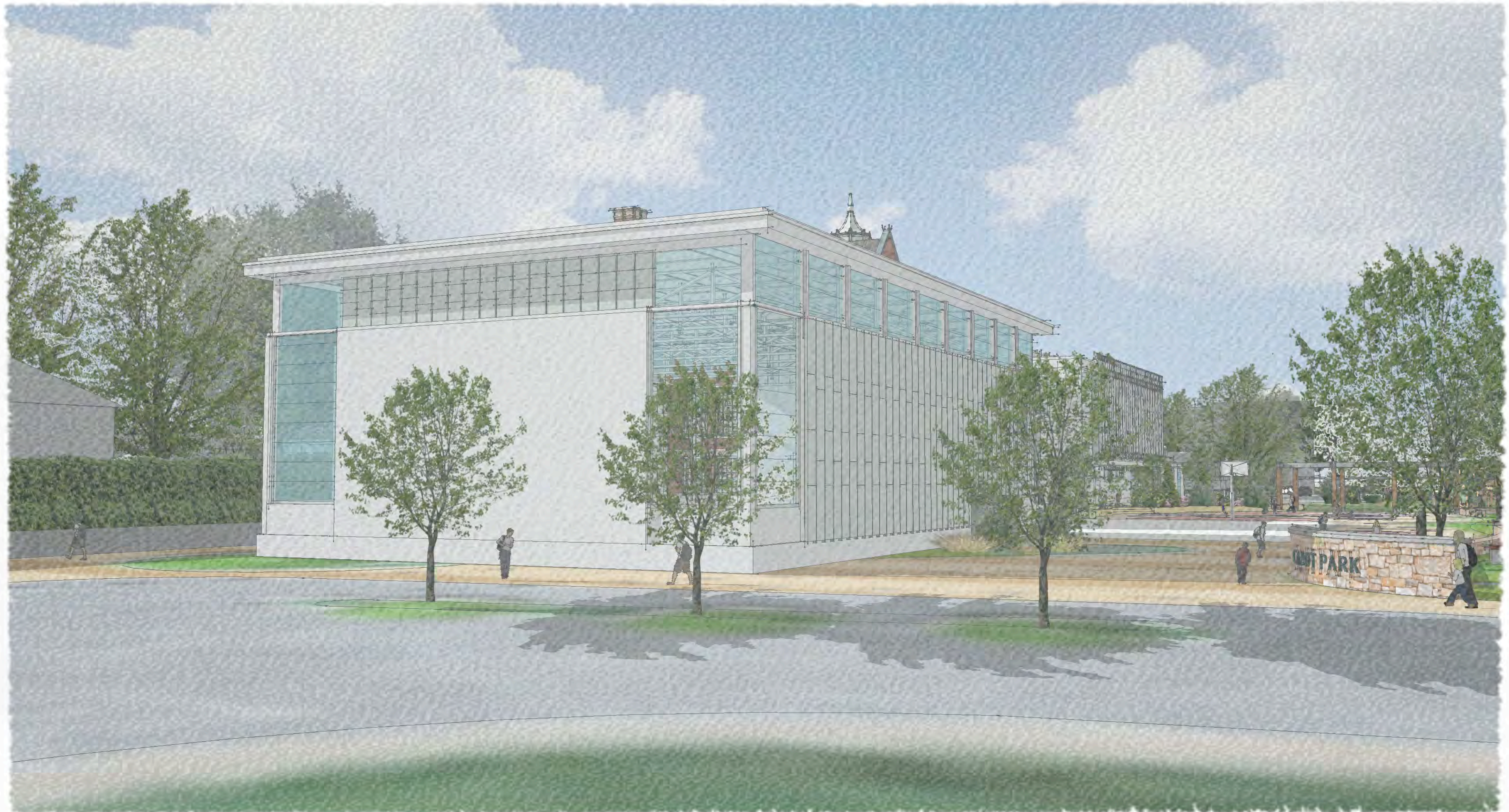
Perspective | Concept 4.3

Gym Moved to Cabot St.



Perspective | Concept 4.3

Gym Moved to Cabot St.



Perspective | Concept 4.3

Gym Moved to Cabot St.



Perspective | Concept 4.3

Gym Moved to Cabot St.



Perspective | Concept 4.4

Gym Rotated 90°



Perspective | Concept 4.4

Gym Rotated 90°



Perspective | Concept 4.4

Gym Rotated 90°

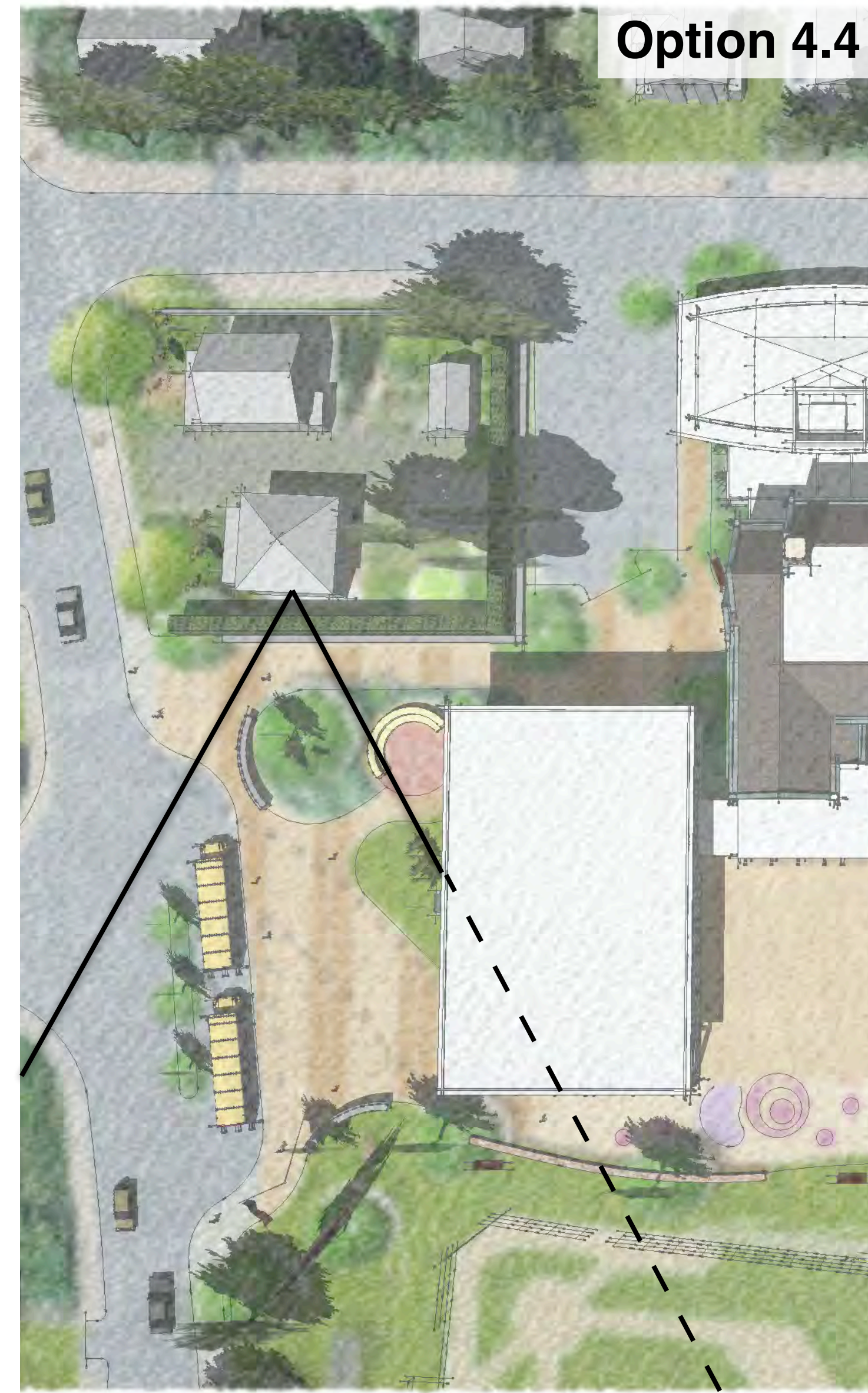
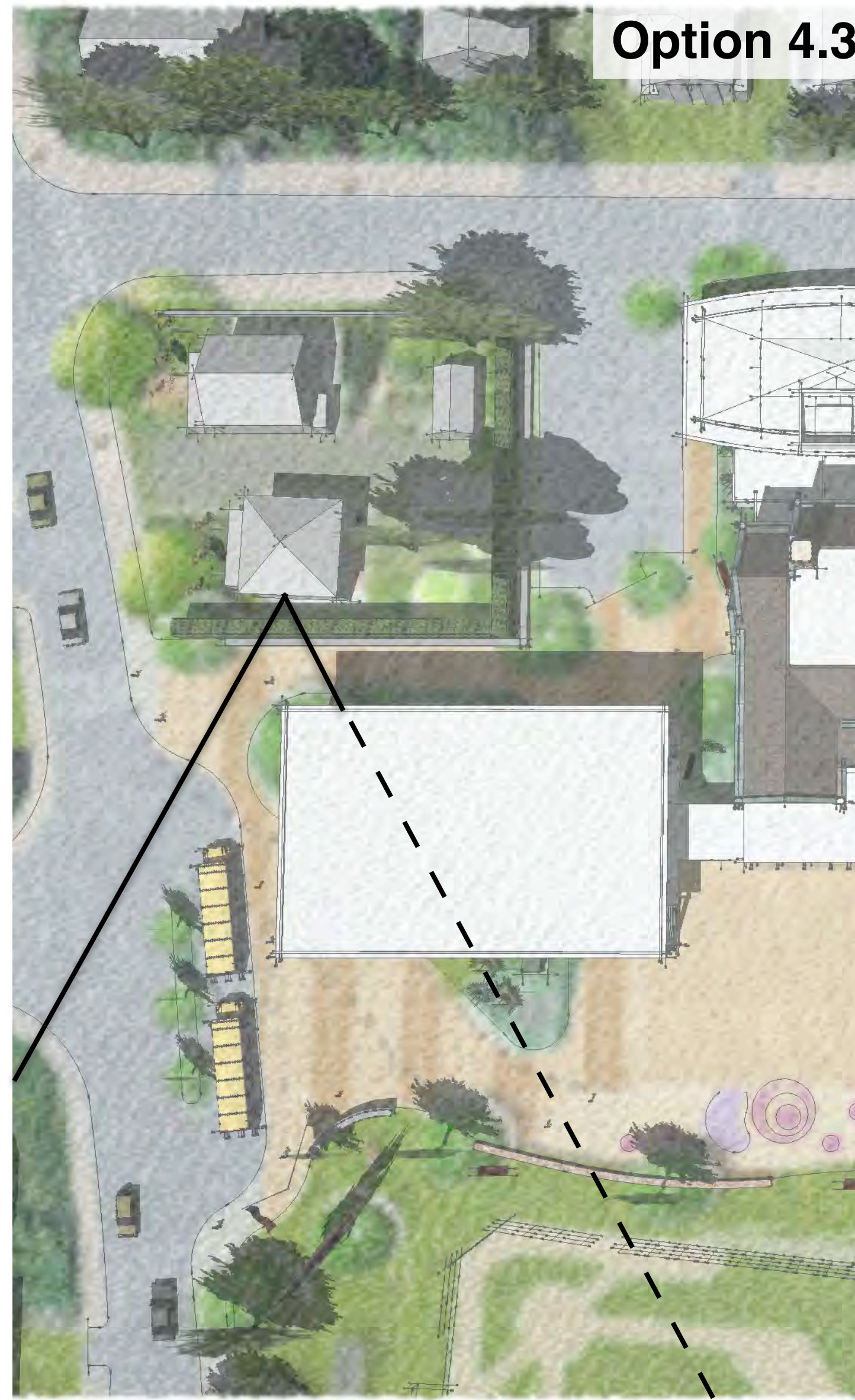


Perspective | Concept 4.4

Gym Rotated 90°



View from 231 Cabot Street



Perspective | Concept 4.1

Gym Moved 10' South



Perspective | Concept 4.2

Gym Moved 20' South



Perspective | Concept 4.3

Gym Moved to Cabot St.



Perspective | Concept 4.4

Gym Rotated 90°



Sun Study | Summer Solstice



Sun Study | Spring & Fall Equinox



Sun Study | Winter Solstice



Perspective

Cabot Street Entry w/ Gym AHU



Perspective

View North on Parkview Ave. w/ Gym AHU

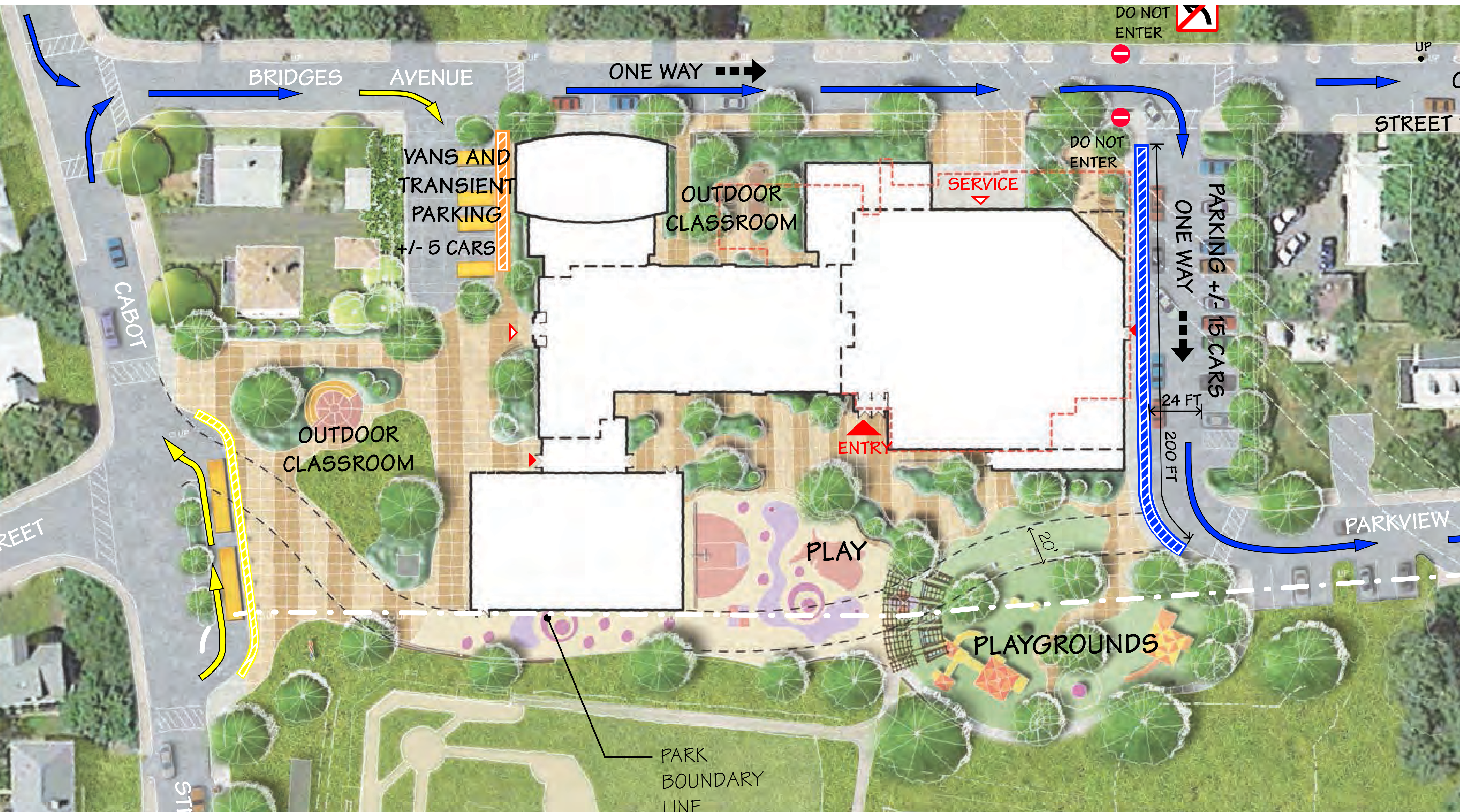
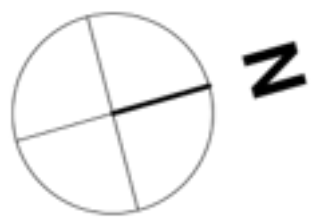


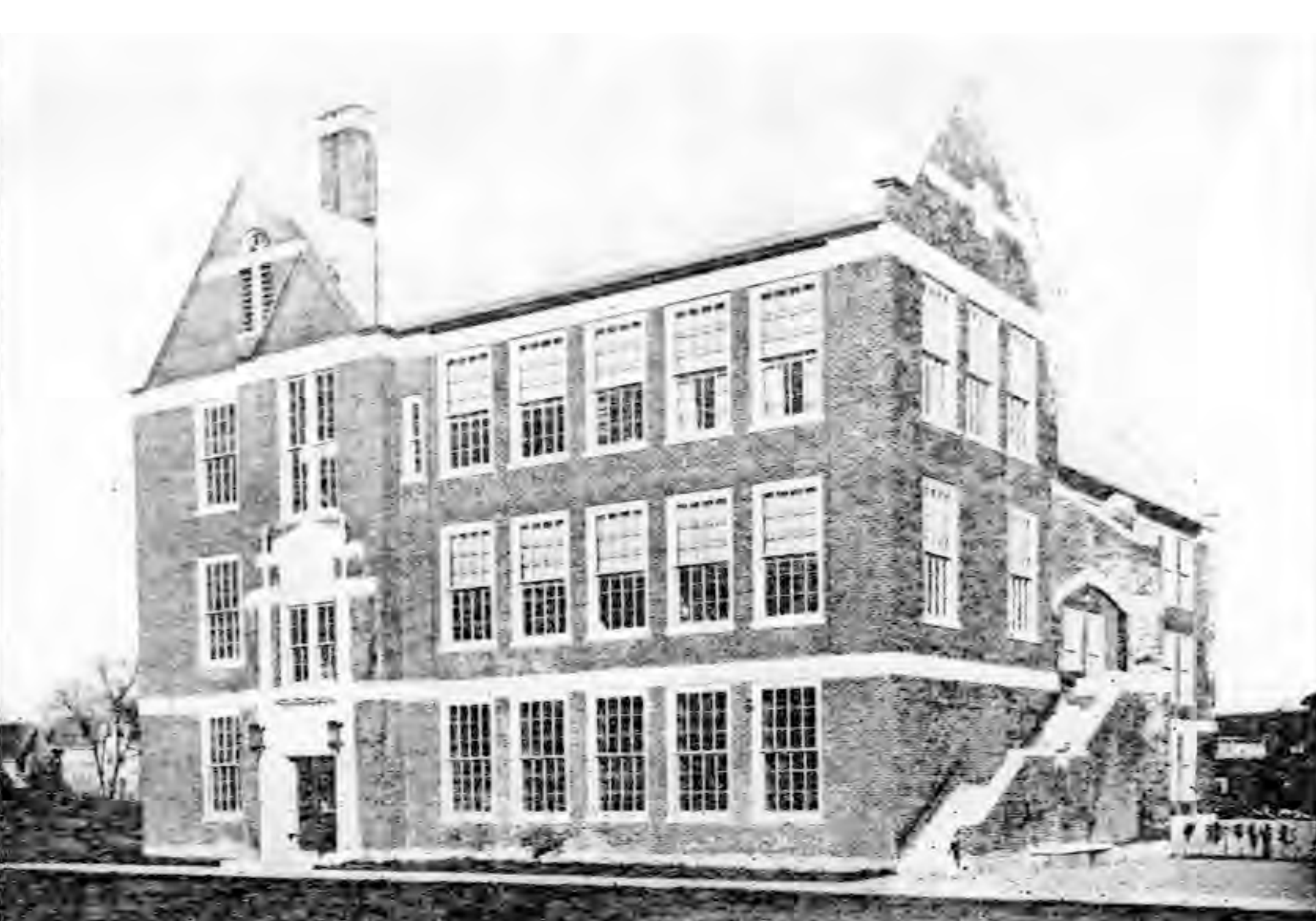
Perspective

View from Cabot Park w/ Gym AHU



Site Plan | Concept 4 Refinement



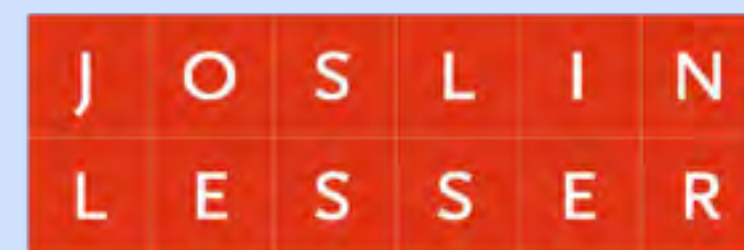


DRT Meeting

March 23, 2016



Cabot School



Project Management
An N|V|5 Company

DiNisco Design
PARTNERSHIP