

# CSBC & DRC Meeting

March 17, 2016



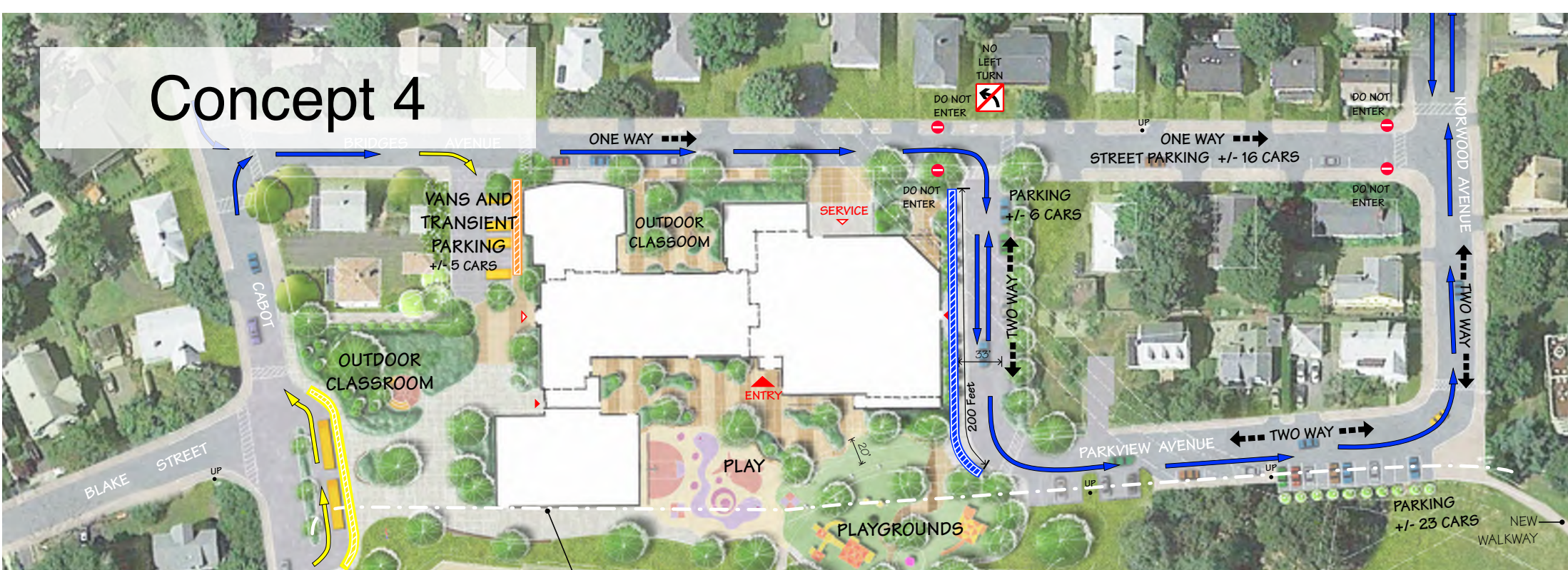
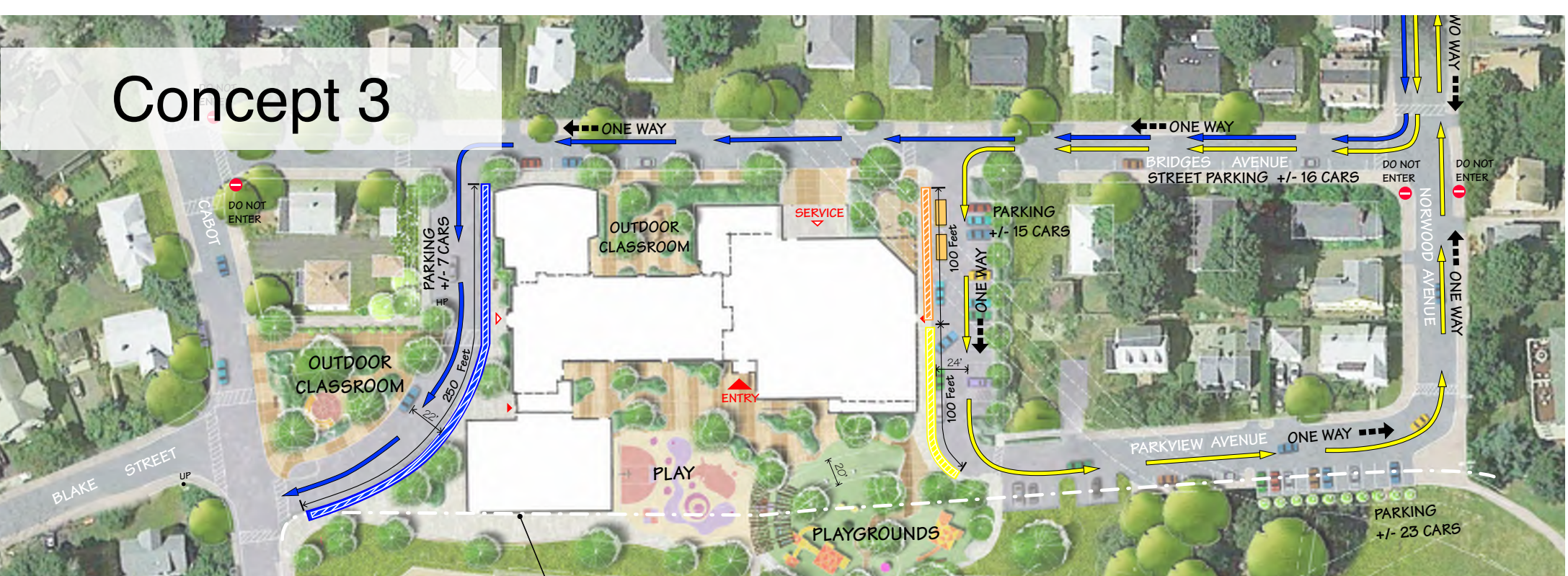
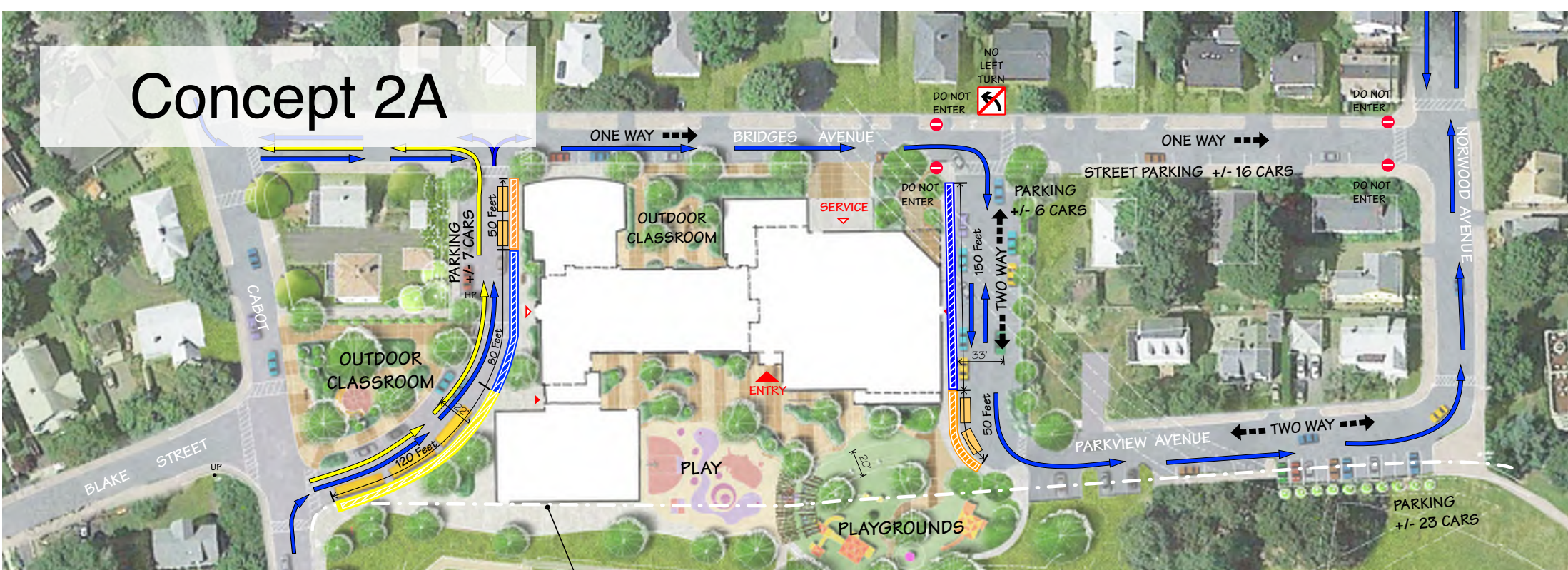
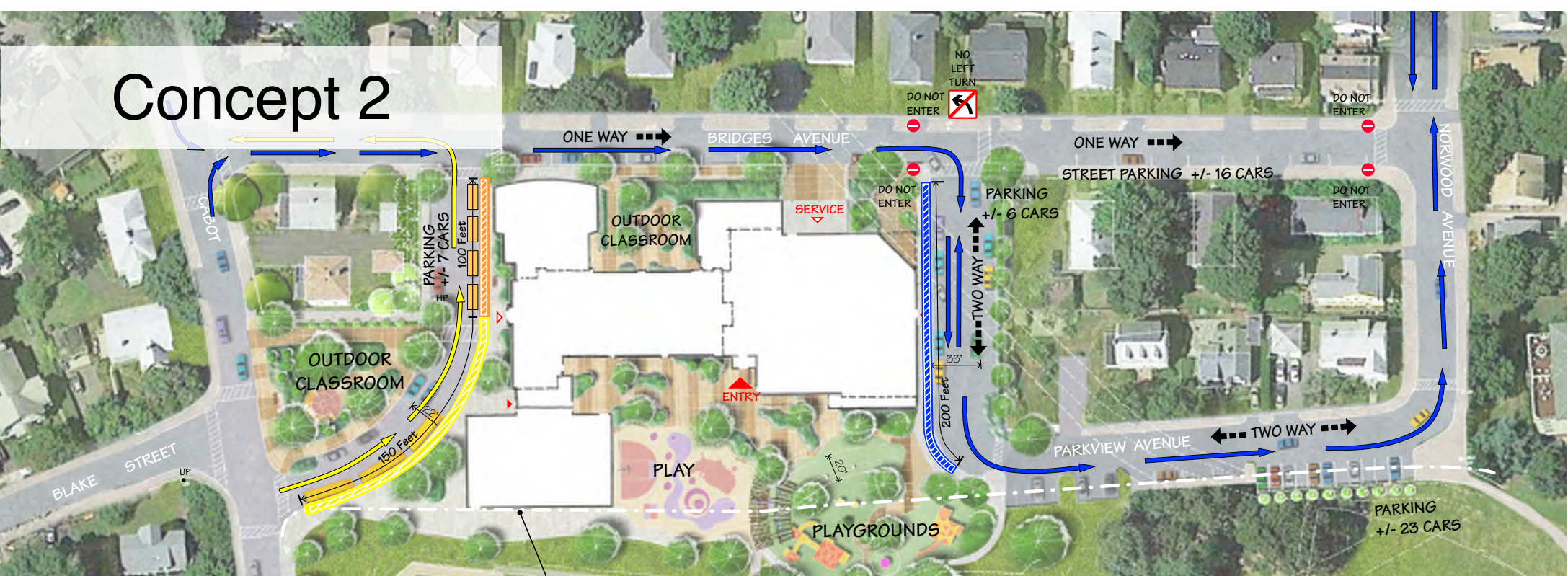
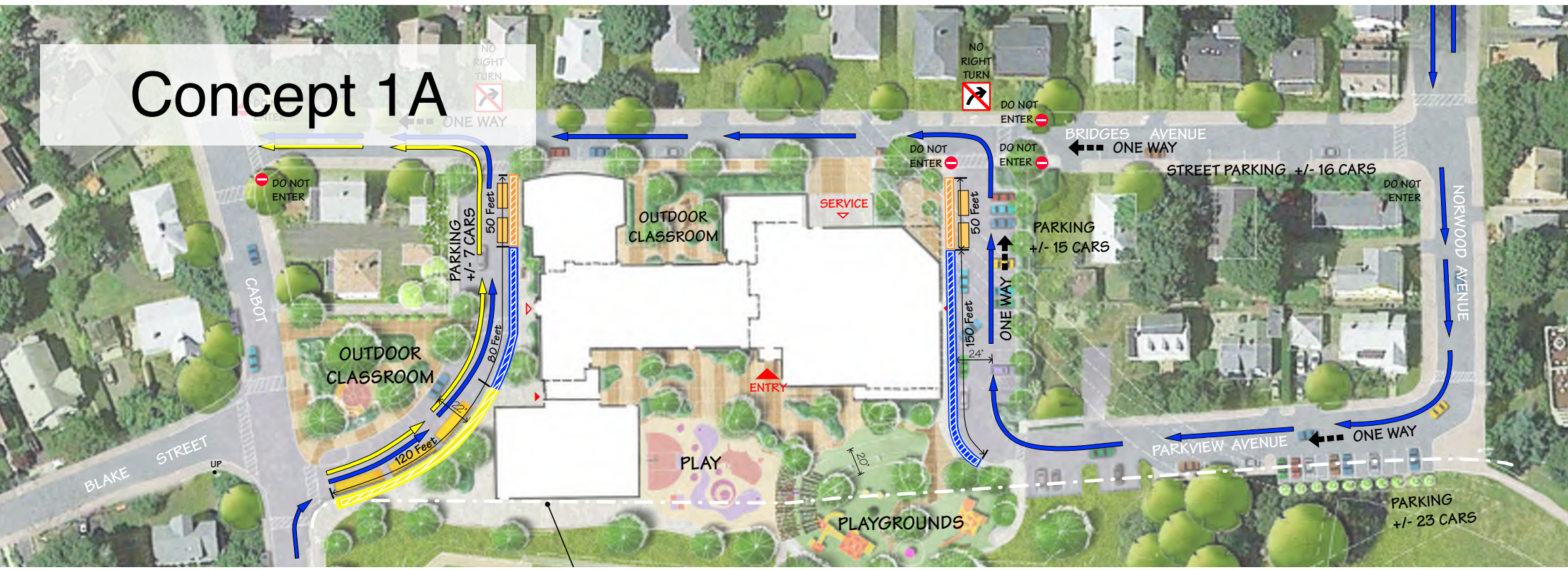
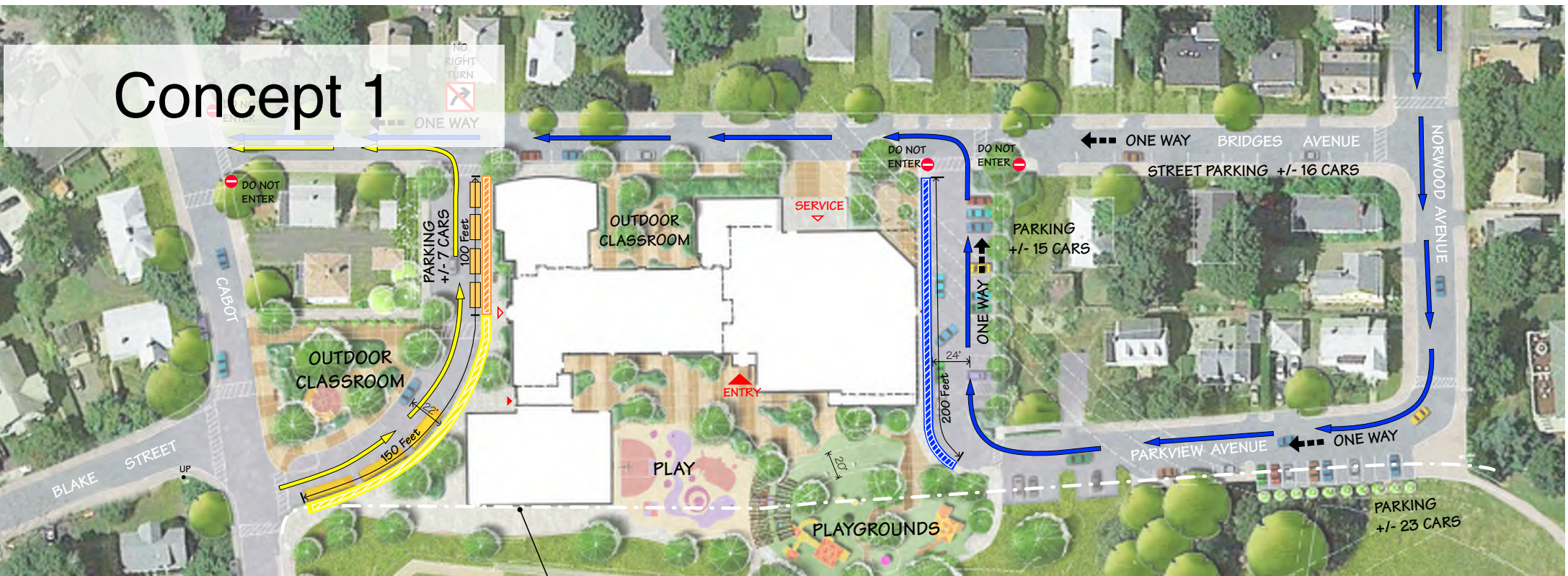
## Cabot School



*DiNisco Design*  
**PARTNERSHIP**



# Traffic Circulation | Recap





# Site Plan | Concept 4 Refinement

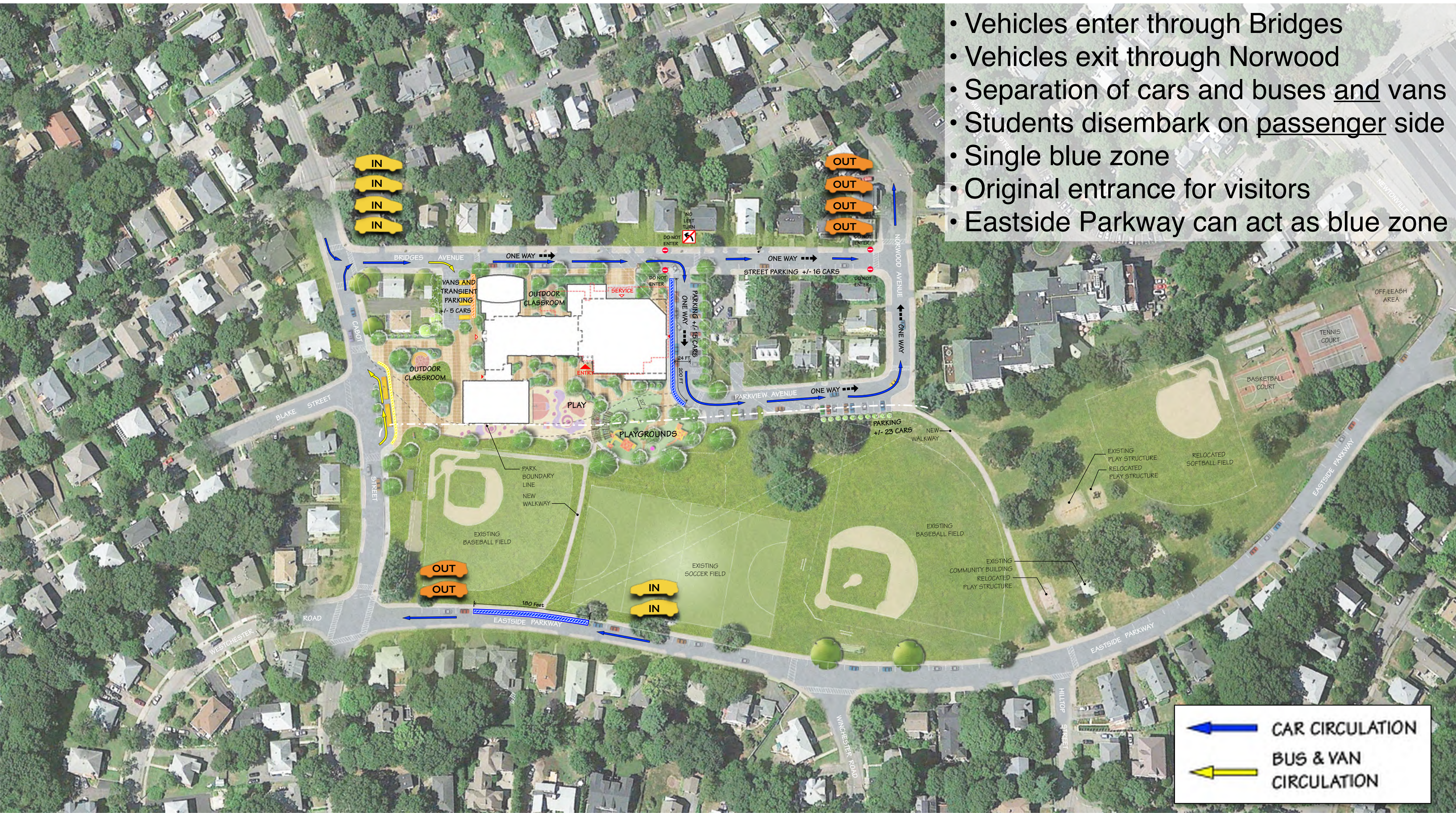




# Traffic Circulation | Concept 4

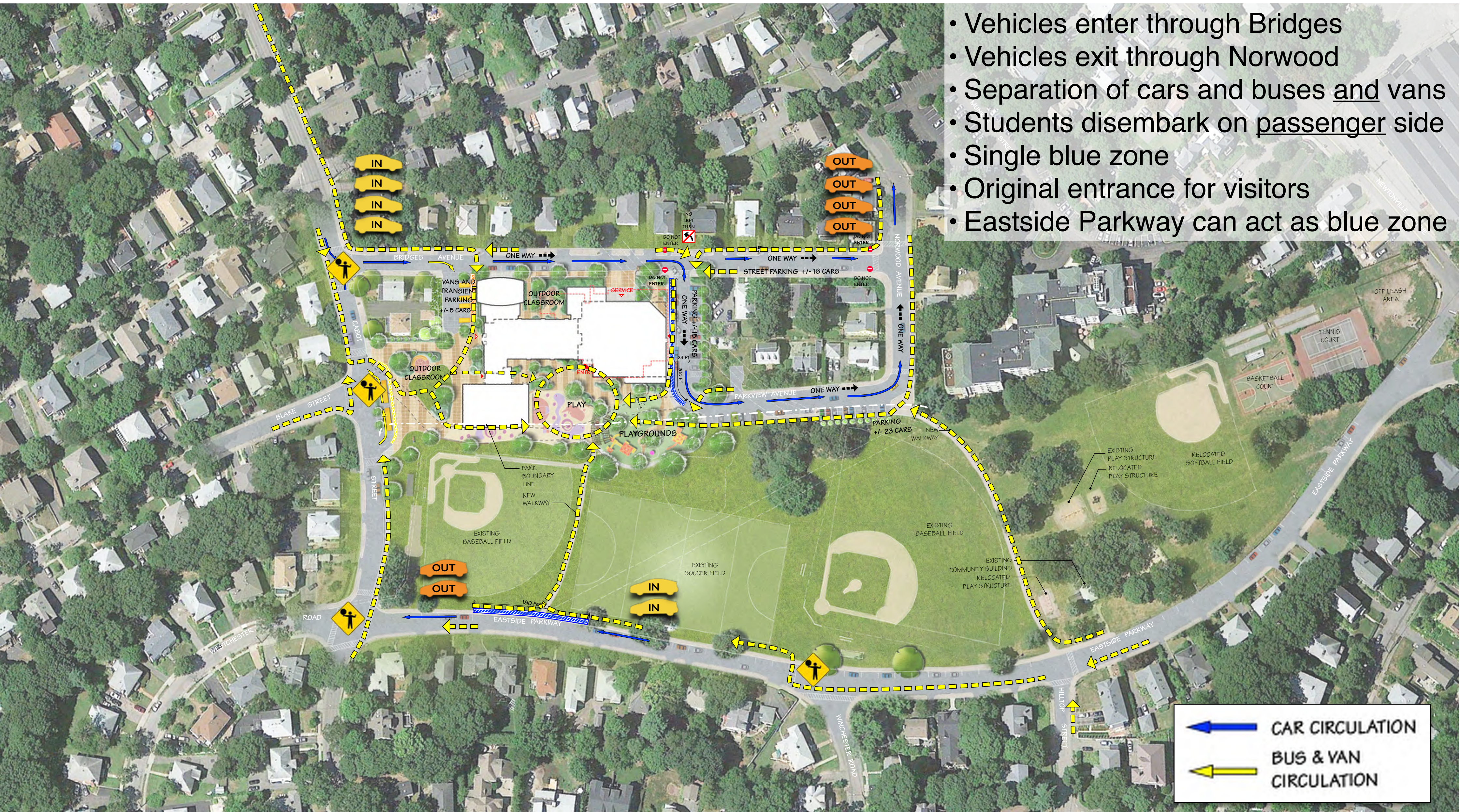


- Vehicles enter through Bridges
- Vehicles exit through Norwood
- Separation of cars and buses and vans
- Students disembark on passenger side
- Single blue zone
- Original entrance for visitors
- Eastside Parkway can act as blue zone

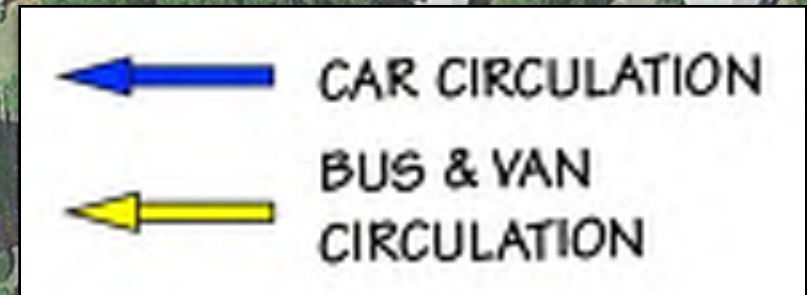




# Traffic Circulation | Concept 4

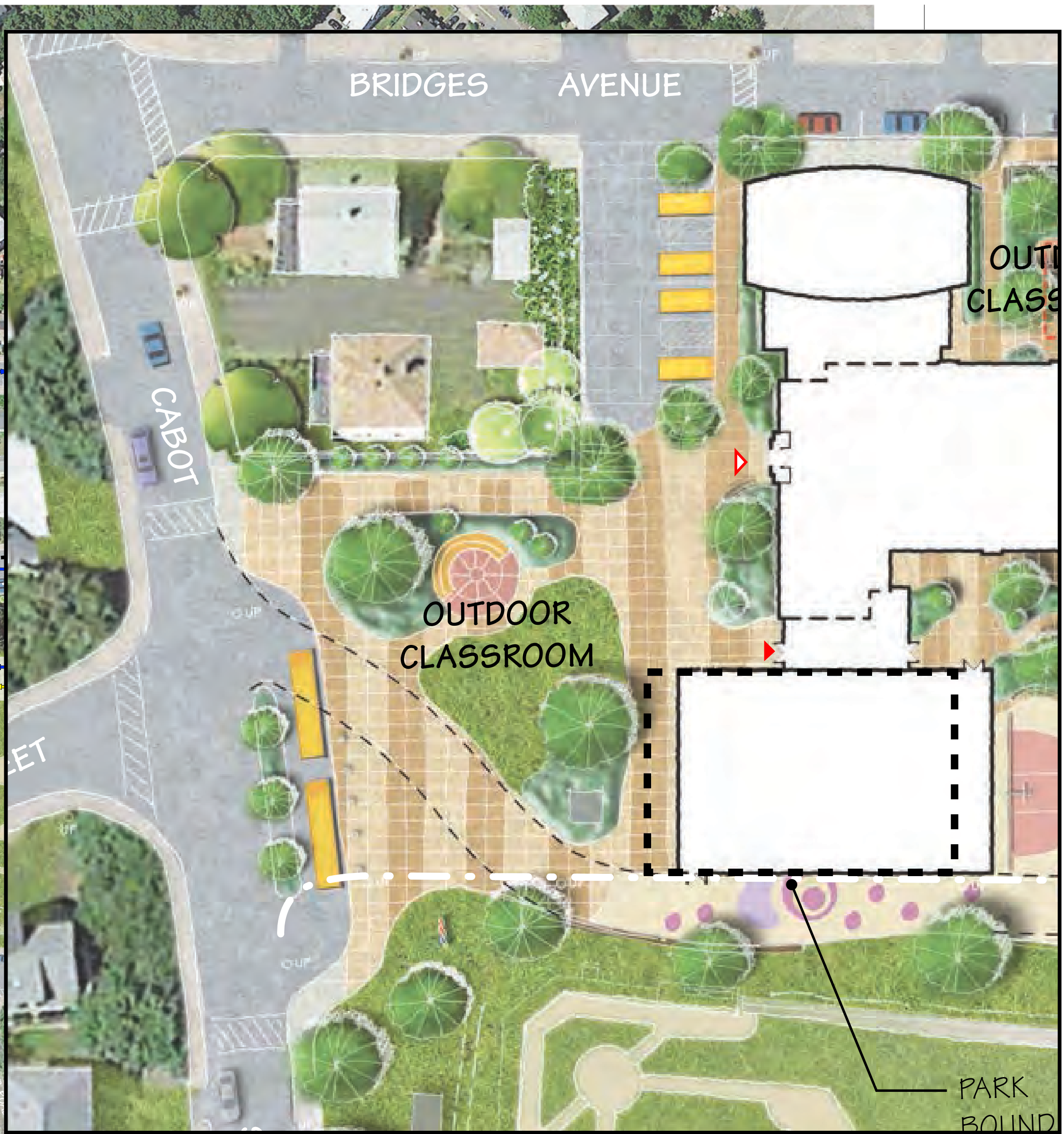


- Vehicles enter through Bridges
- Vehicles exit through Norwood
- Separation of cars and buses and vans
- Students disembark on passenger side
- Single blue zone
- Original entrance for visitors
- Eastside Parkway can act as blue zone





# Site Plan | Concept 4 Refinement





# Site Plan | Concept 4 Refinement





# Perspective | Concept 4

Cabot Street Entry





# Perspective | Concept 4 Alternate

Cabot Street Entry





# Perspective | Concept 4

View North from Cabot Street





# Perspective | Concept 4



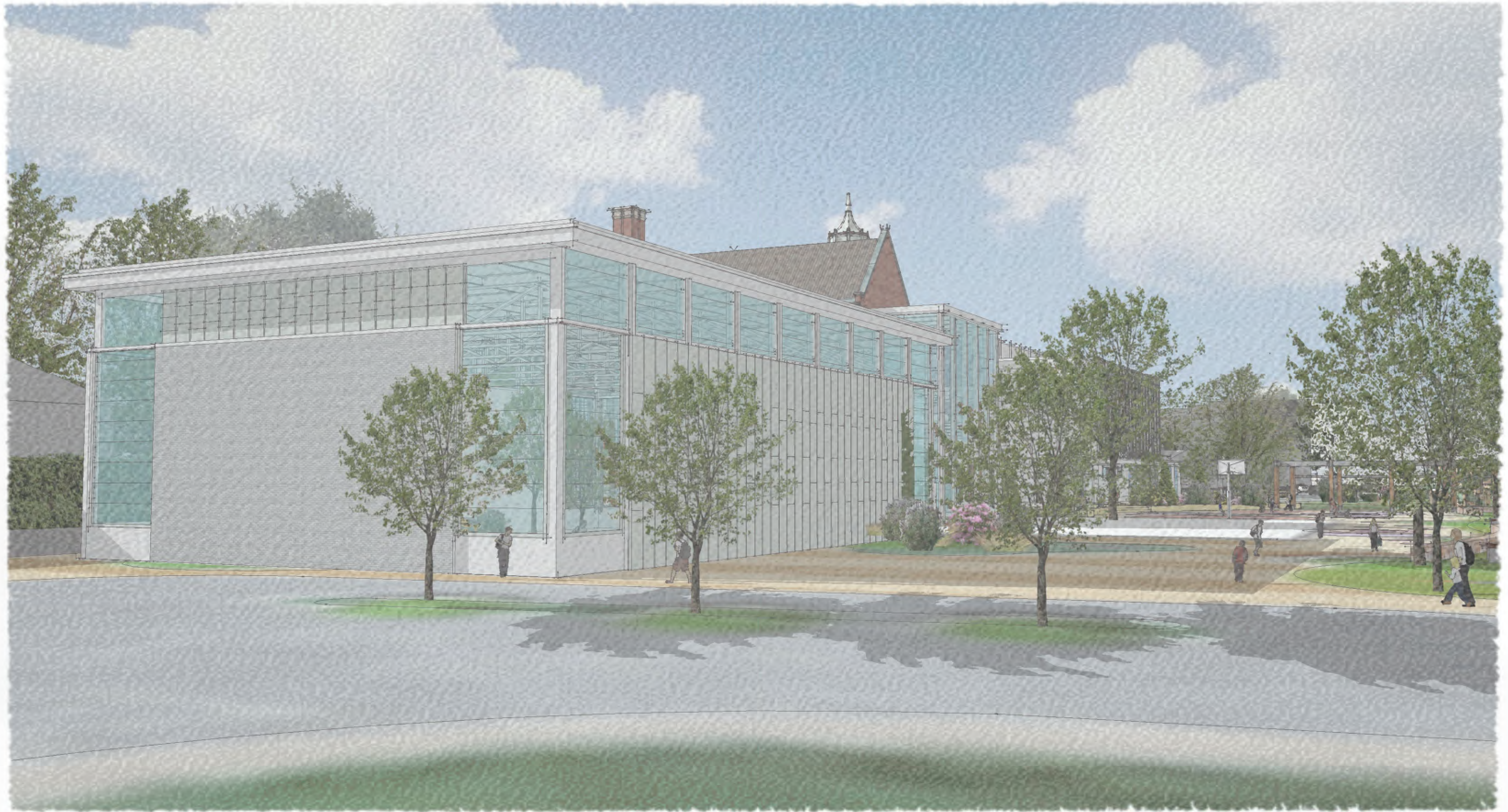


# Perspective | Concept 4 Alternate





# Perspective | Gym on Cabot





# Perspective | Concept 4

View from Cabot Park



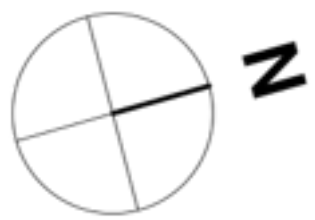



# Perspective | Concept 4 Alternate View from Cabot Park






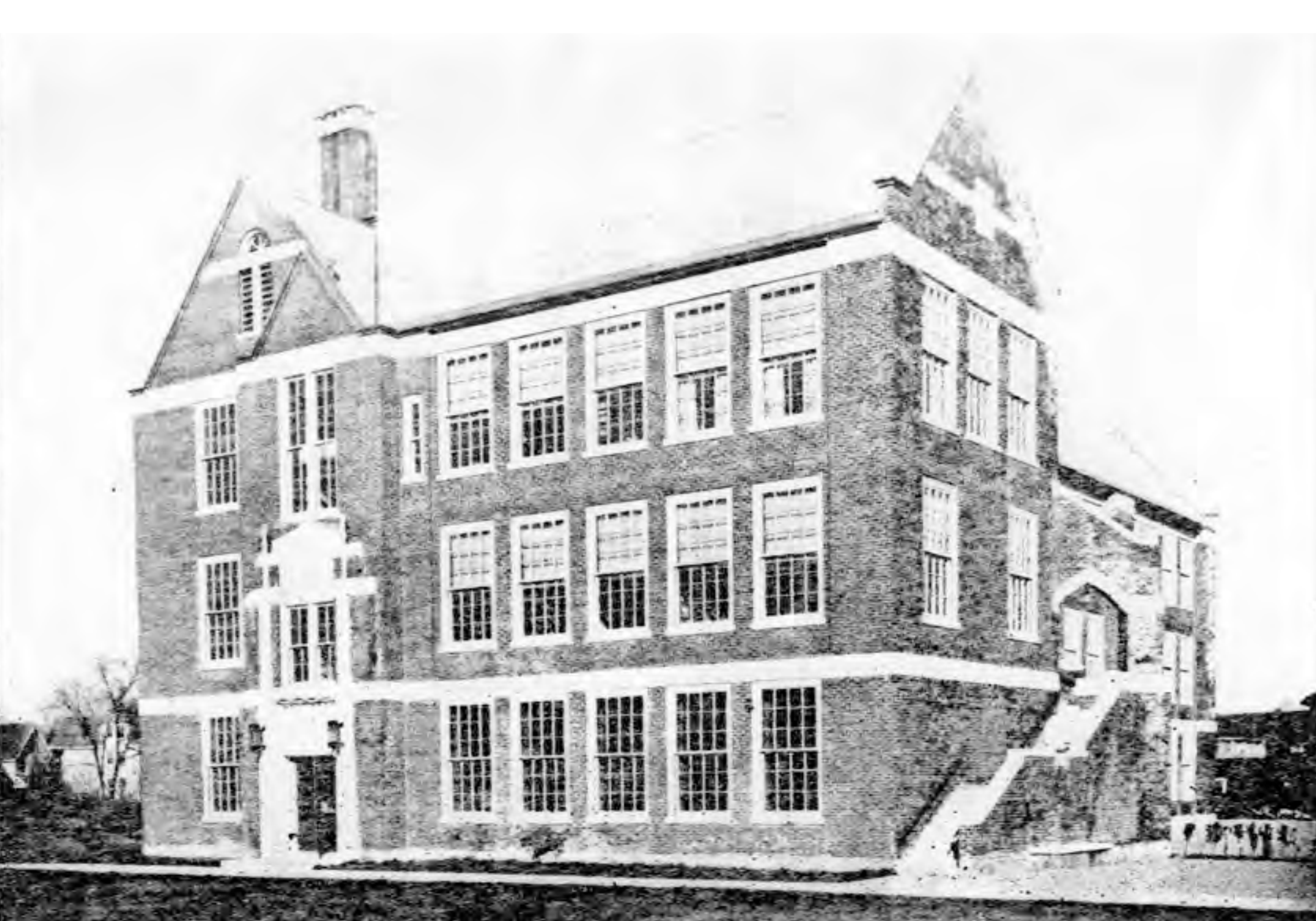
# Site Plan | Concept 4 Refinement



 CAR CIRCULATION

 BUS & VAN CIRCULATION





# CSBC & DRC Meeting

March 17, 2016



## Cabot School



*DiNisco Design*  
**PARTNERSHIP**