

Newton Historical Commission Meeting

July 23, 2015



Cabot School

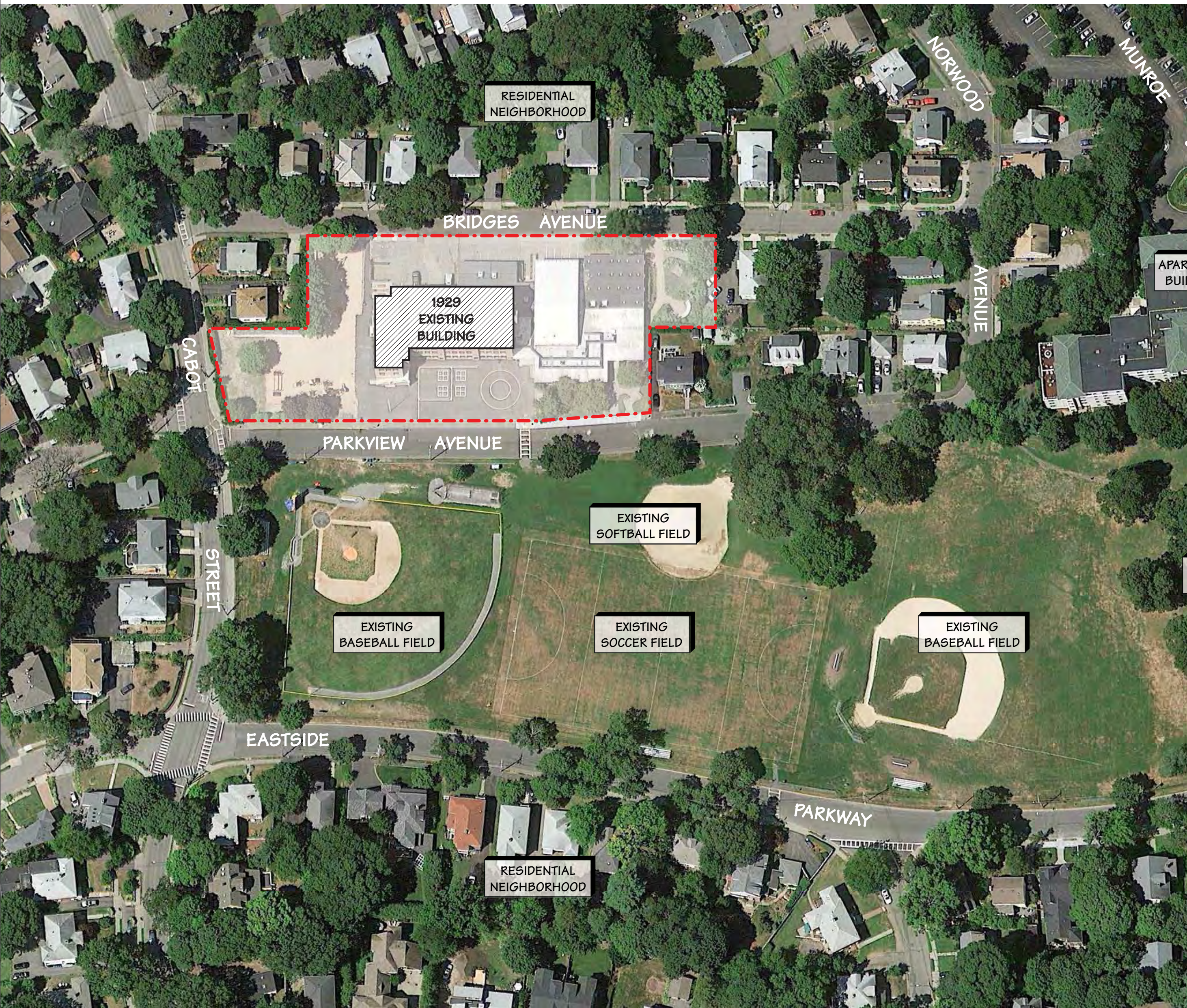


DiNisco Design
PARTNERSHIP

Site Analysis



Site Analysis



Existing Site Utilization

- 1.77 acres - constrained
- Limited play areas
- Congested traffic/drop-off
- No separate bus zone
- Inadequate parking



Cabot School | Existing Building



Cabot School | Existing Building



Cabot School | Existing Building



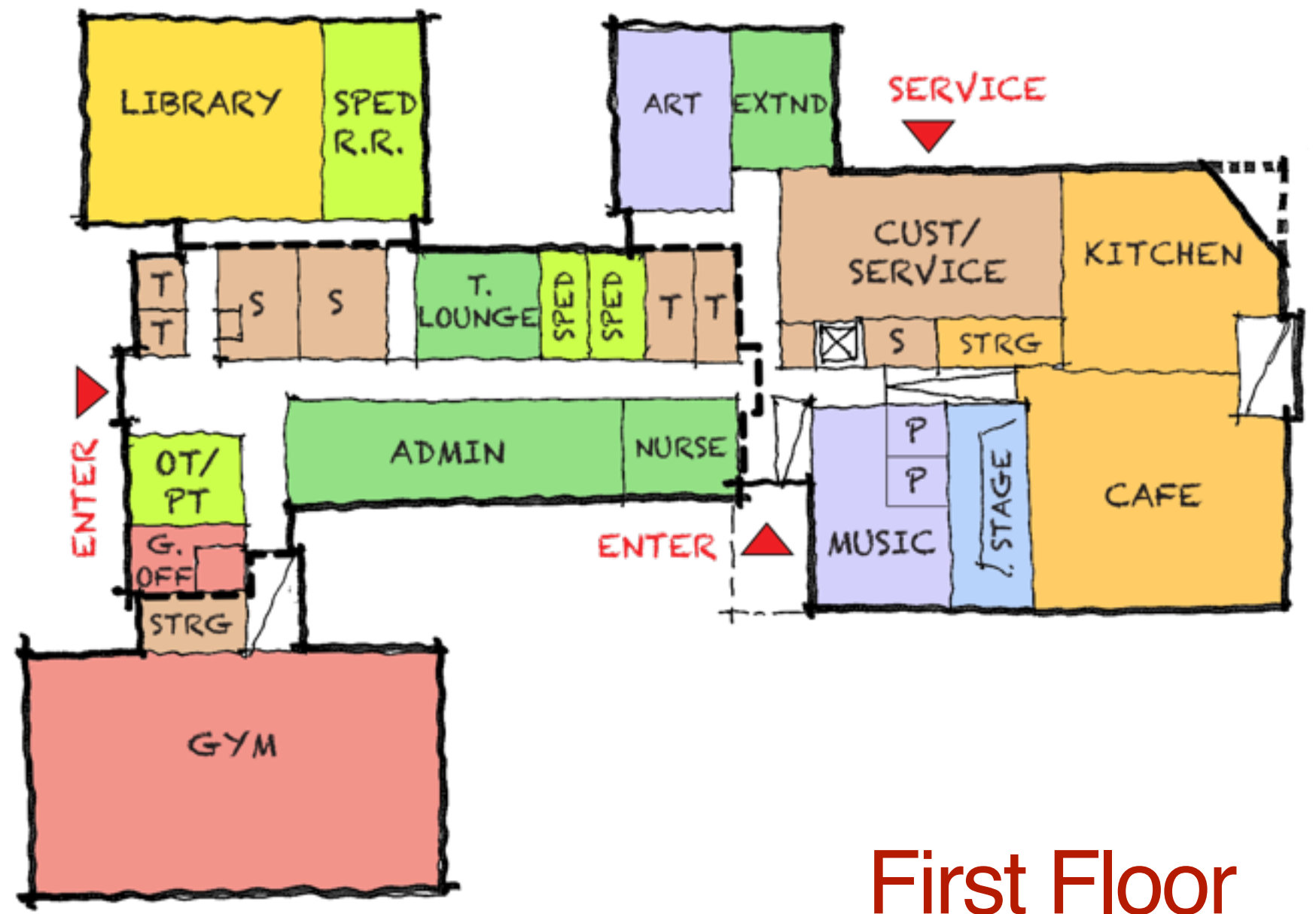
Renovation Addition I Site Plan



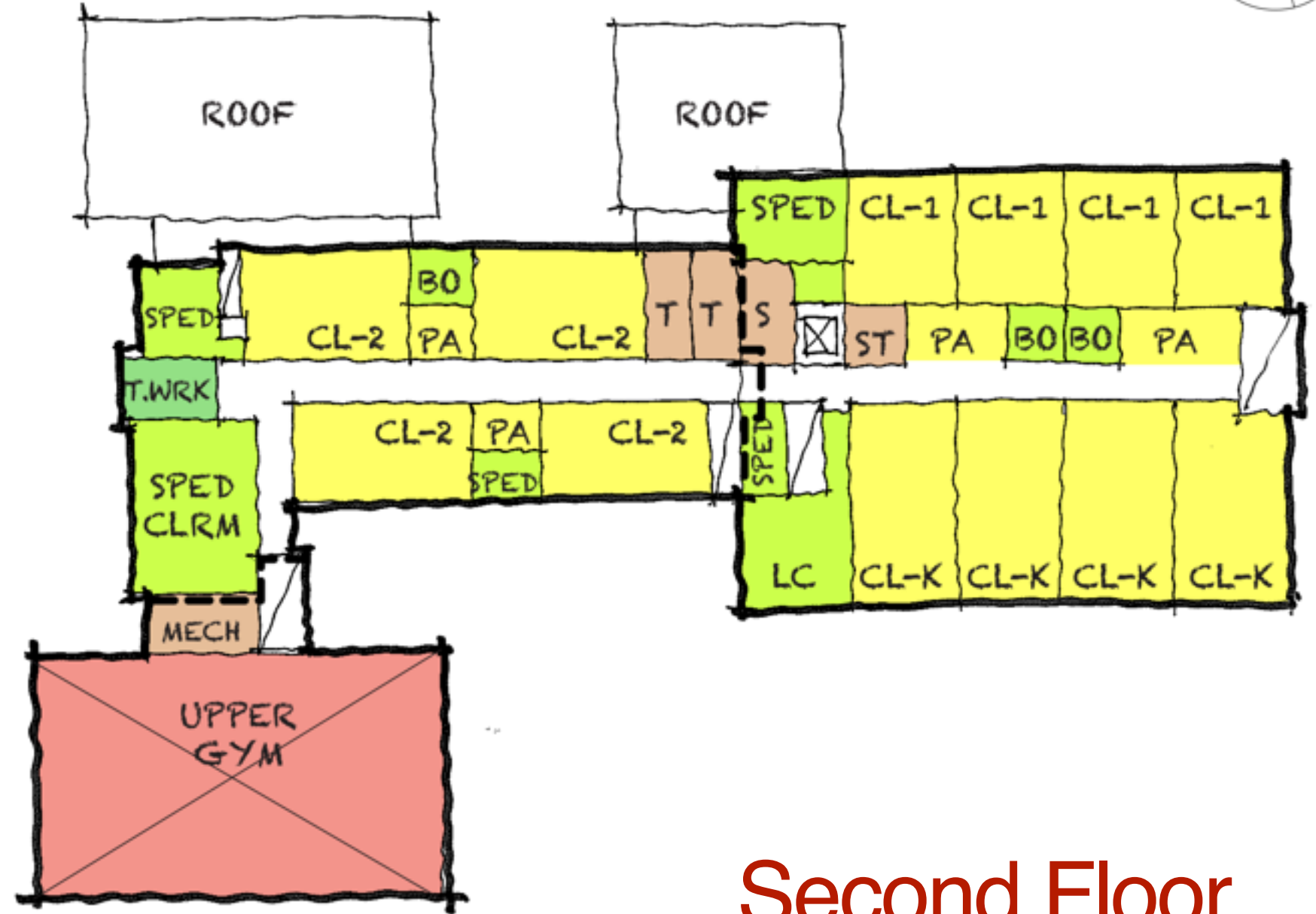
Renovation Addition I Site Plan



Renovation Addition I Floor Plans



First Floor

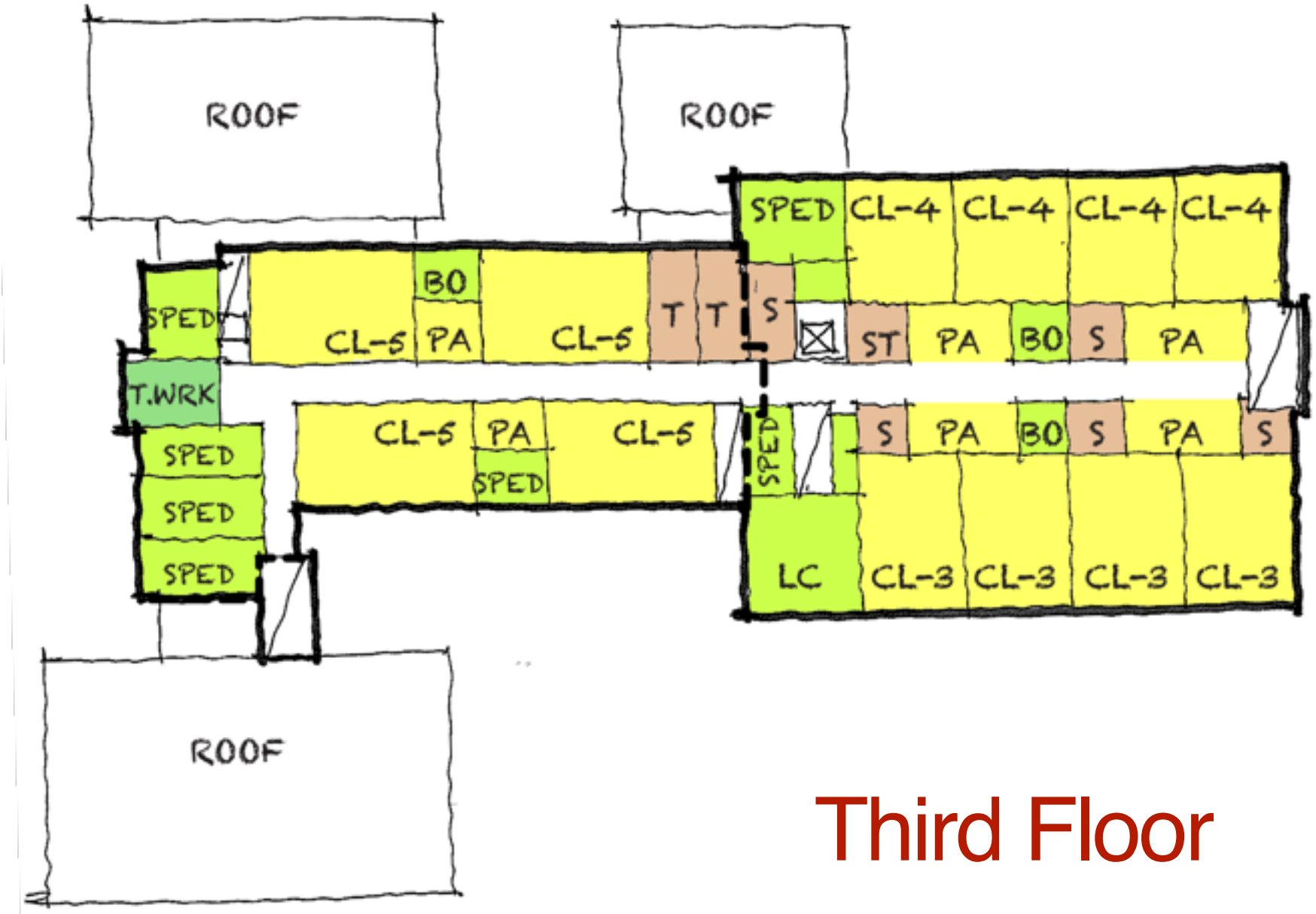


Second Floor

LEGEND

- CLASSROOM
- SPECIAL EDUCATION
- LIBRARY
- ART/MUSIC
- STAGE
- GYMNASIUM
- KITCHEN/CAFETERIA
- ADMINISTRATION
- BUILDING SERVICES

- * Variations within scheme will be studied
- Core program located on **ground floor**
- Gym can be **zoned off**
- Kindergarten + 1st grade on **2nd floor**
- Academics on **two floors**
- **Limited floor-to-floor heights** due to preservation of 1929 building
- Cafeteria **lowered 30 inches**



Third Floor

Proposed Site Plan Option

Aerial View



Proposed Site Plan Option

View North on Parkview Ave.



Proposed Site Plan Option

View from Cabot Park



Proposed Site Plan Option

Outdoor Teaching Space



Proposed Site Plan Option

View North on Bridges Ave.



Precedents

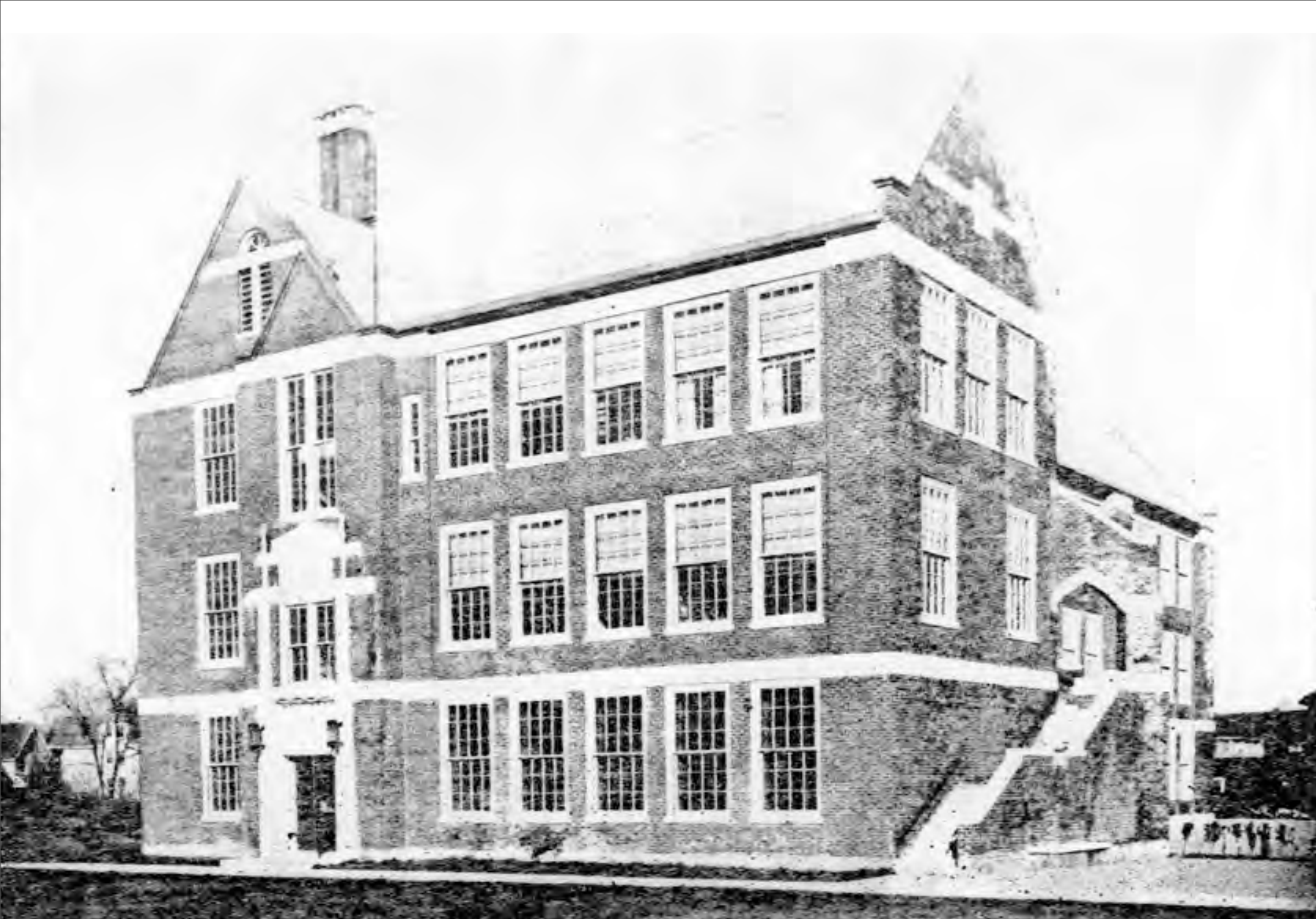
Holten Richmond MS | Danvers, MA



Precedents

Holten Richmond MS | Danvers, MA





Newton Historical Commission Meeting

July 23, 2015



Cabot School

J O S L I N
L E S S E R

DiNisco Design
PARTNERSHIP