

CSBC / DRC Meeting

September 1, 2015



Cabot School

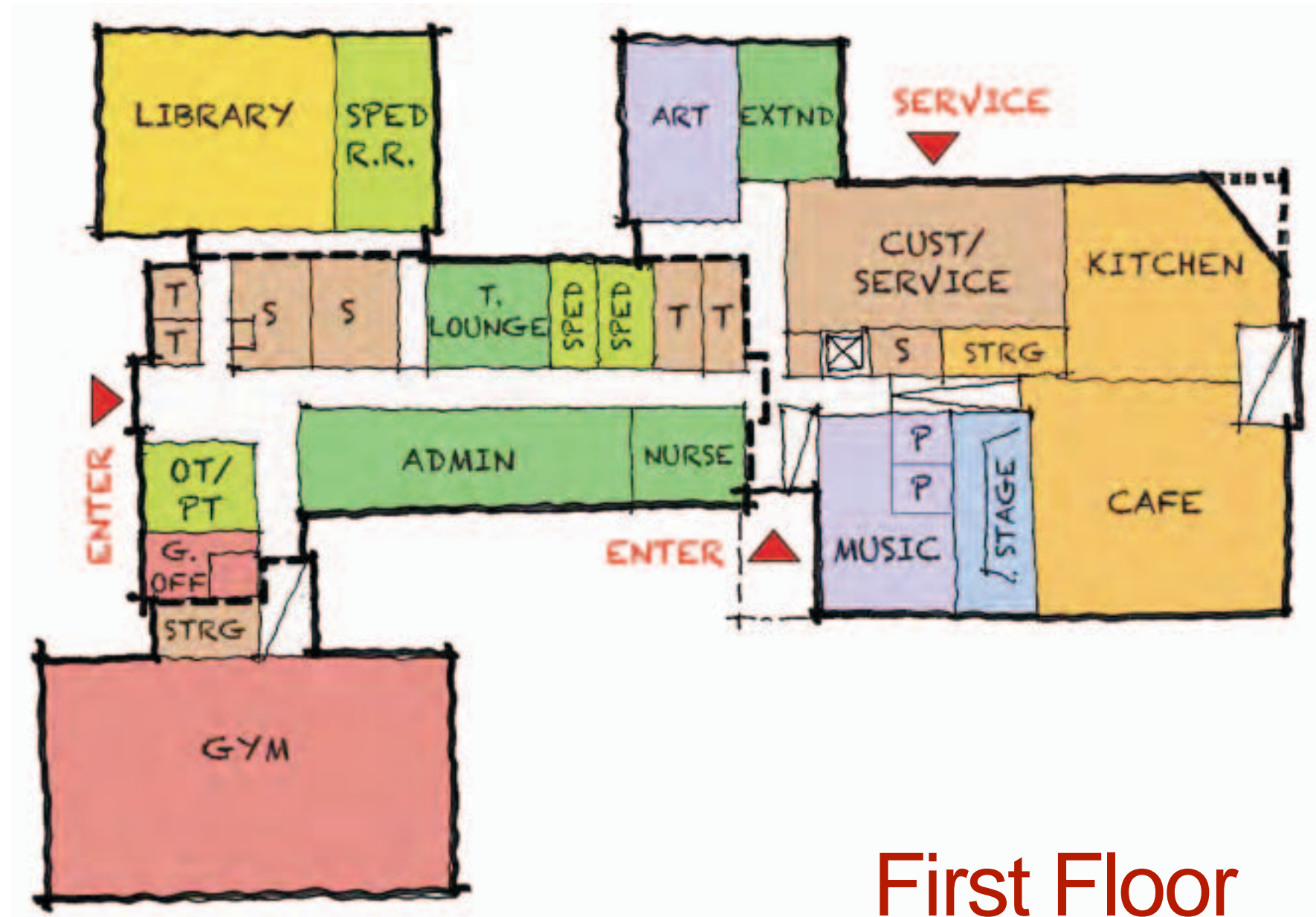
J O S L I N
L E S S E R

DiNisco Design
PARTNERSHIP

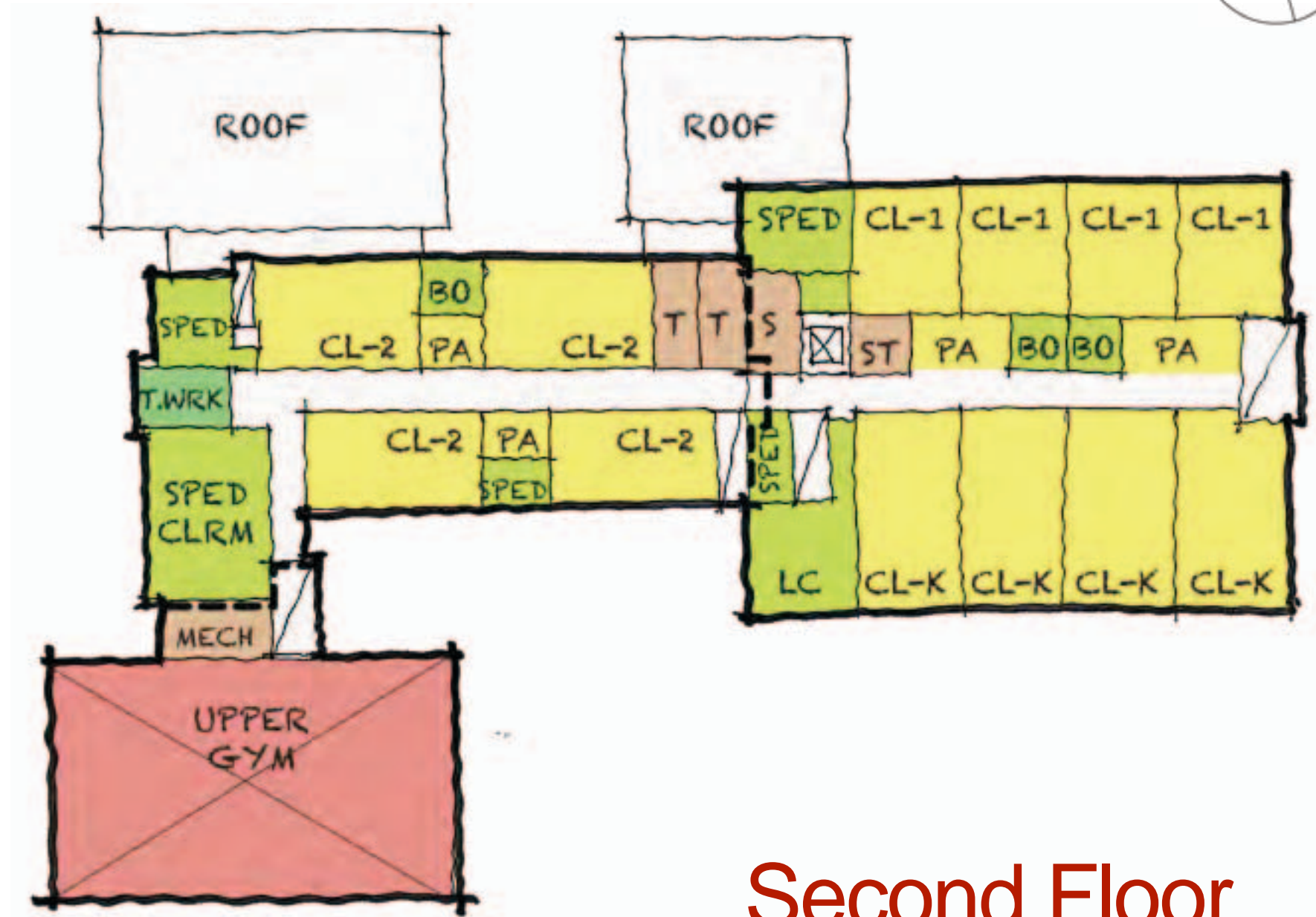
Agenda

- Design Update
- Newton Historic Commission Update
- Parks & Recreation Commission Update
- CM@Risk Update
- Schedule Review

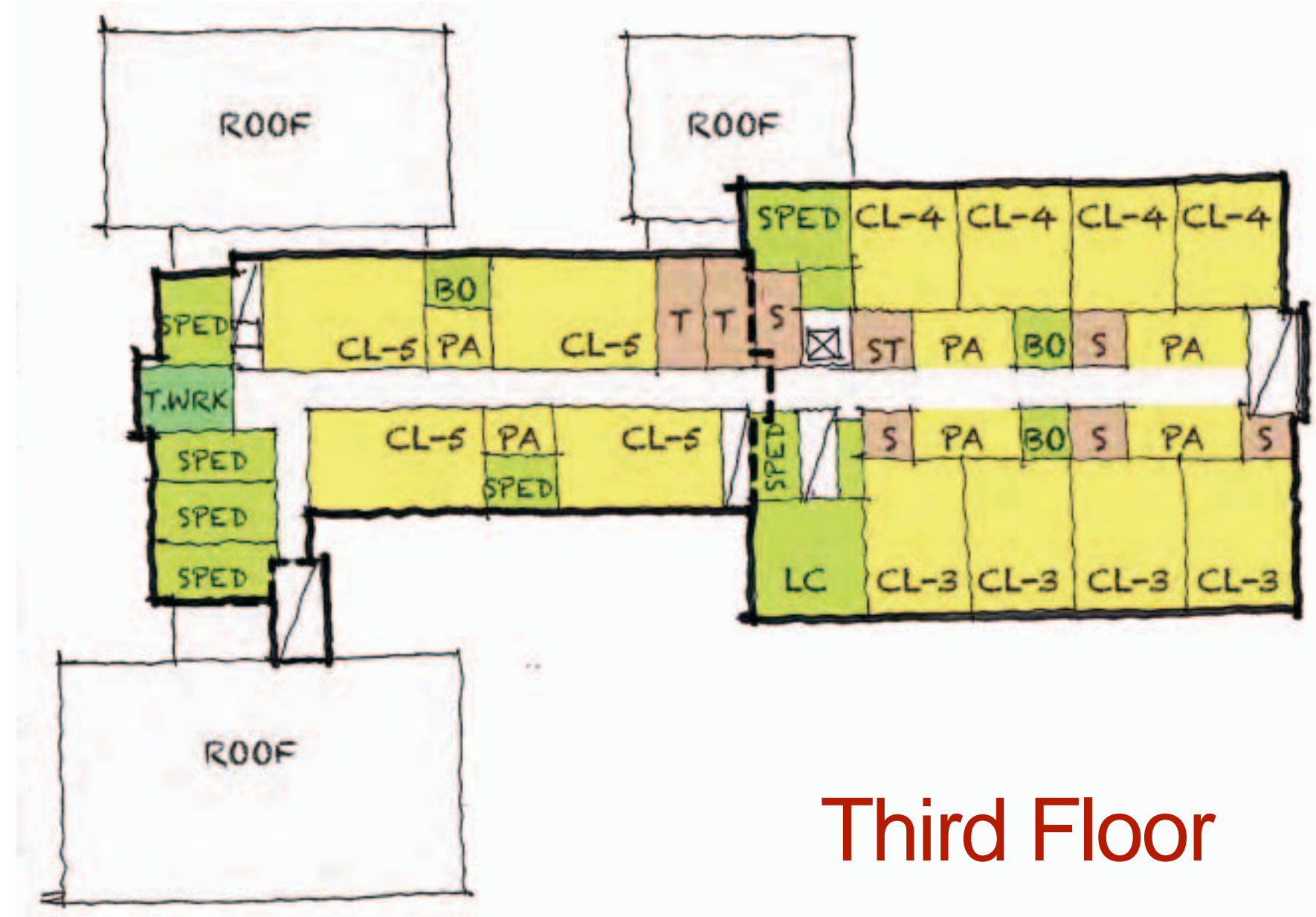
Renovation Addition | Floor Plans



First Floor



Second Floor



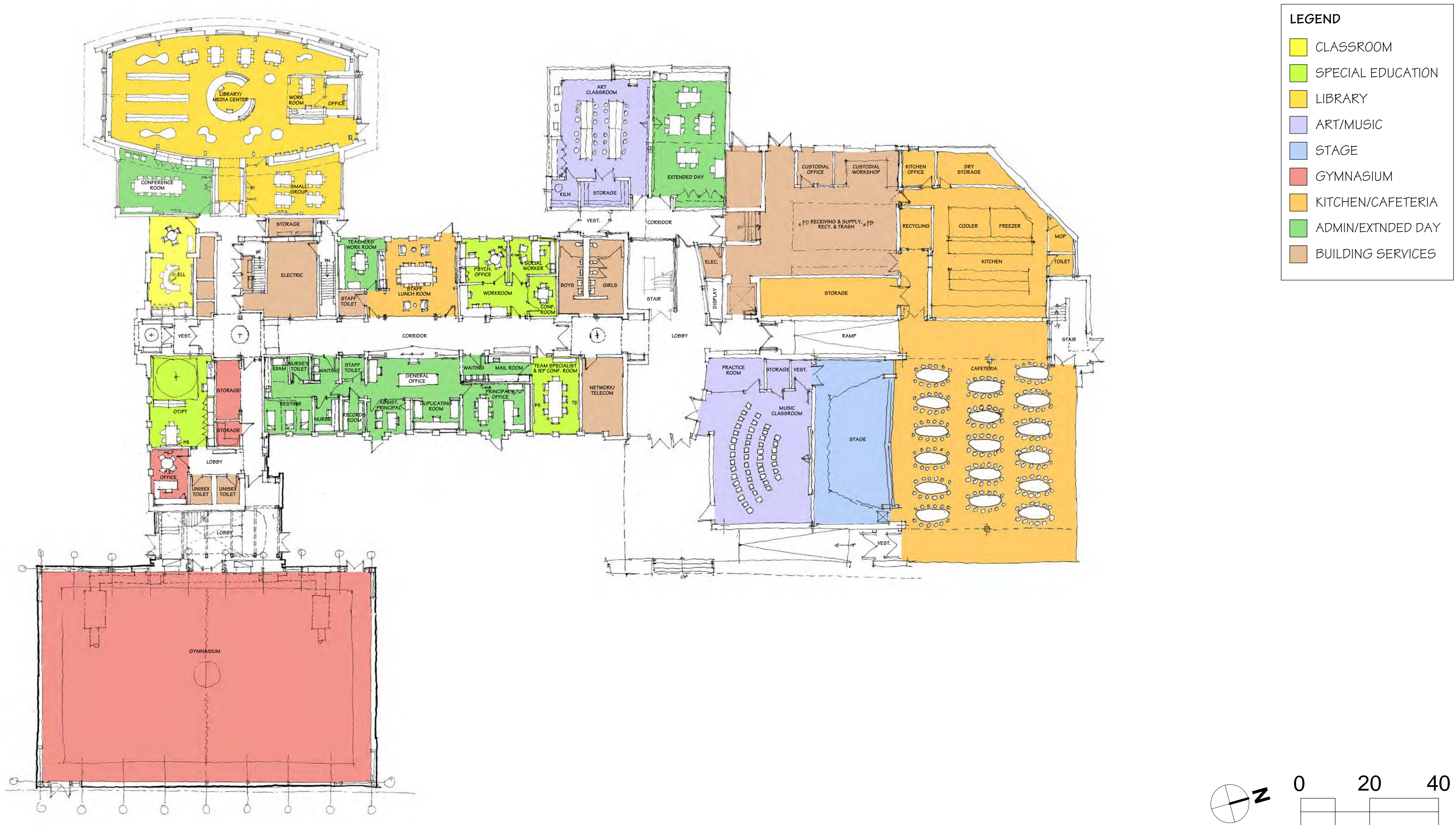
Third Floor

LEGEND

- CLASSROOM
- SPECIAL EDUCATION
- LIBRARY
- ART/MUSIC
- STAGE
- GYMNASIUM
- KITCHEN/CAFETERIA
- ADMINISTRATION
- BUILDING SERVICES

- * Variations within scheme will be studied
- Core program located on **ground floor**
 - Gym can be **zoned off**
 - Kindergarten + 1st grade on **2nd floor**
 - Academics on **two floors**
 - **Limited floor-to-floor heights** due to preservation of 1929 building
 - Cafeteria **lowered 30 inches**

Floor Plans | First Floor



Floor Plans | Second Floor



Floor Plans | Third Floor

LEGEND

CLASSROOM

SPECIAL EDUCATION

LIBRARY

ART/MUSIC

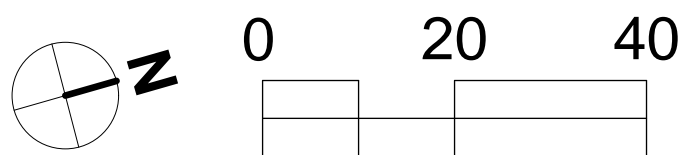
STAGE

GYMNASIUM

KITCHEN/CAFETERIA

ADMIN/EXTNDED DAY

BUILDING SERVICES



Proposed Site Plan

Aerial View



Perspective

View North on Parkview Ave.



Perspective

View from Cabot Park



Perspective

View from East Side Parkway



Perspective

View South on Parkview Ave.



Perspective

View North on Bridges Ave.



Perspective

Parkview Ave. Entrance



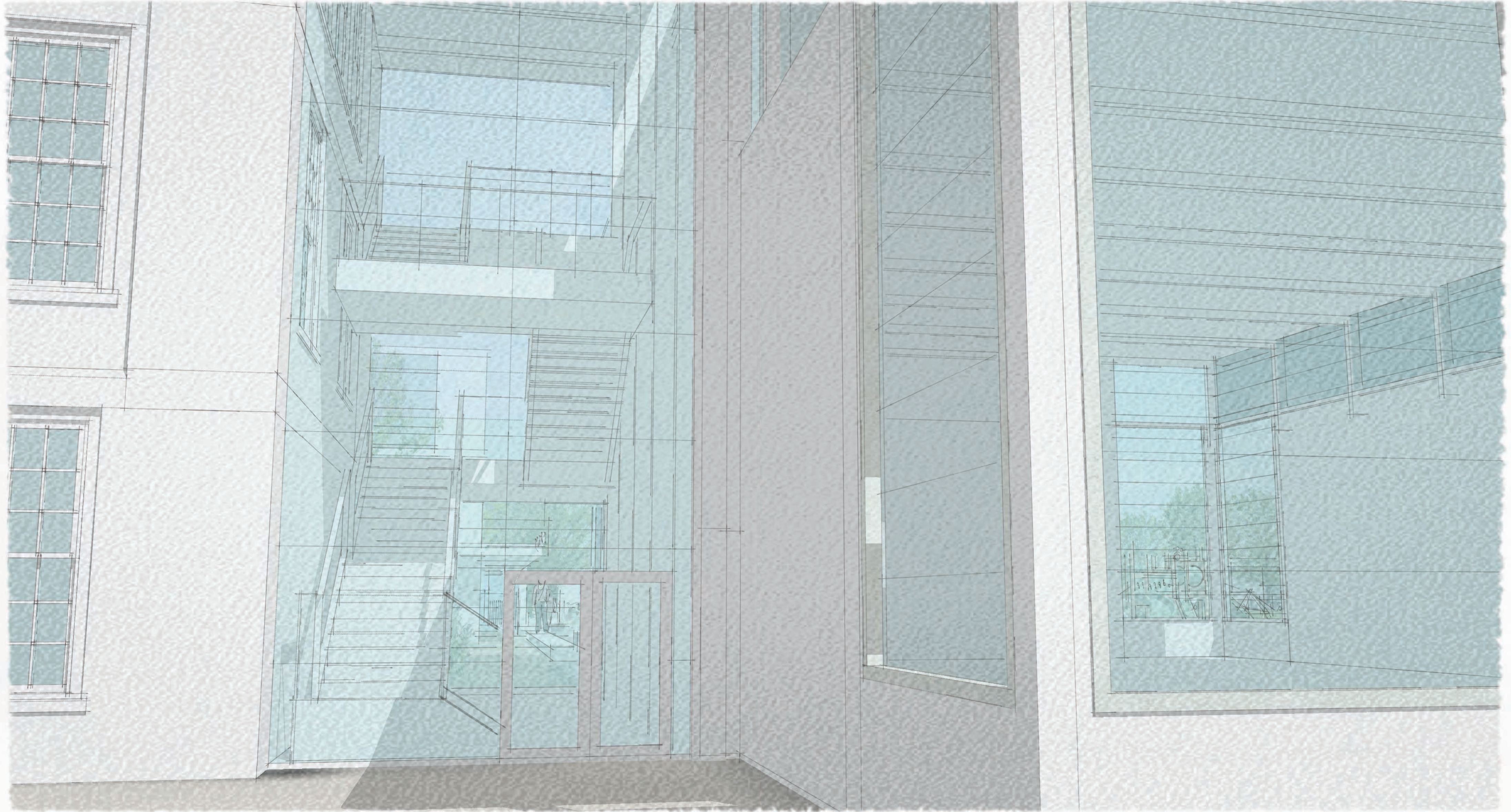
Perspective

Outdoor Learning Space



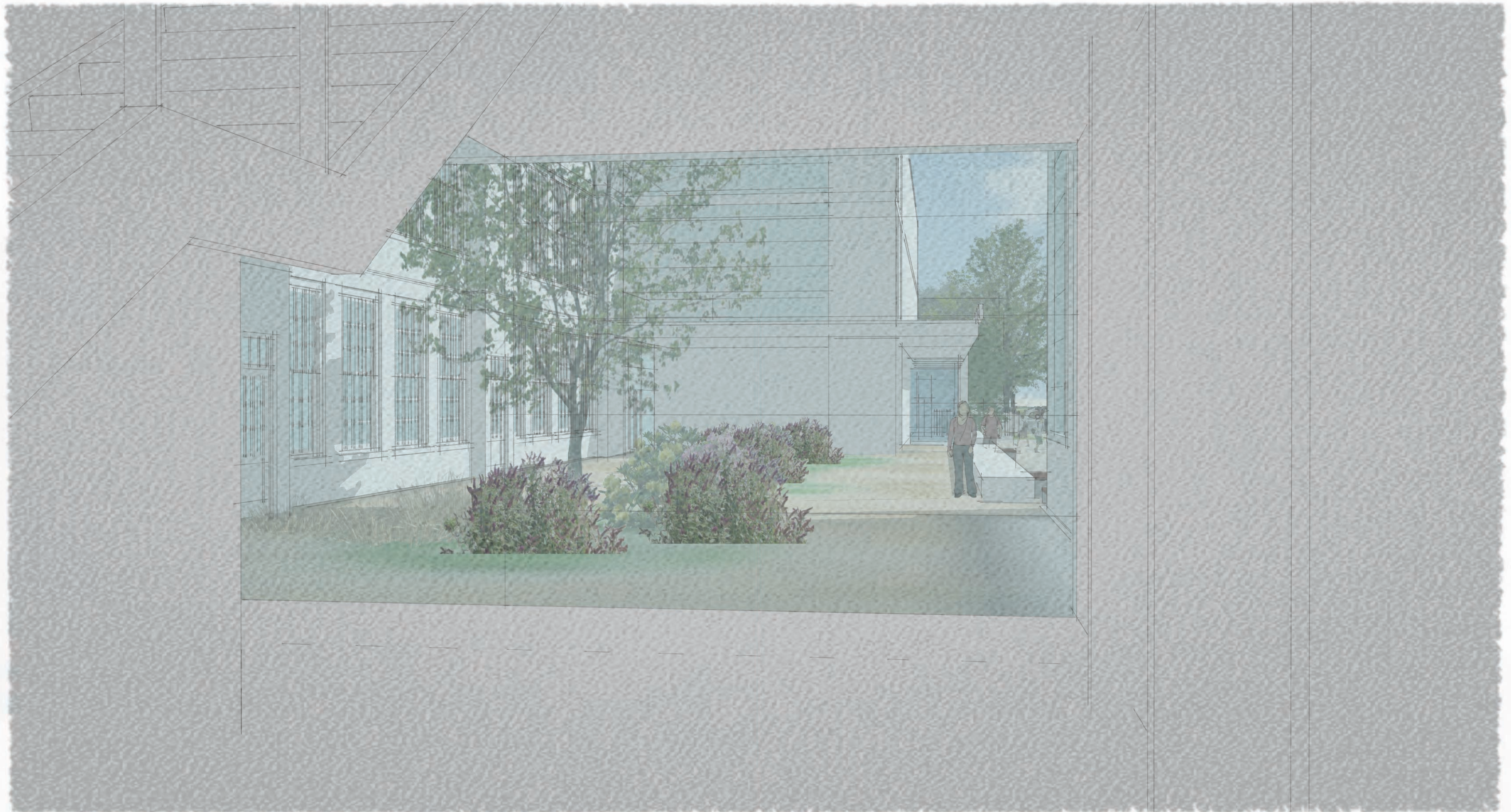
Perspective

Gym Lobby Entrance



Perspective

Gym Lobby



Perspective

View West on Cabot Street



Perspective

View South on Parkview Ave.



Perspective

View South on Bridges Ave.



Parking Needs | Current Requirements

Angier (401 Students)				Zervas (309 Students)				Cabot (418 Students)			
Position	Quantity (FT)	Quantity (PT)	Number of Spots	Position	Quantity (FT)	Quantity (PT)	Number of Spots	Position	Quantity (FT)	Quantity (PT)	Number of Spots
Classroom Teachers	22	0	22	Classroom Teachers	16	0	16	Classroom Teachers	20	0	20
SPED Teachers	6	0	6	SPED Teachers	3	0	3	SPED Co-teachers	3	0	3
Inclusion Facilitator ⁽¹⁾	1	1	2	Inclusion Facilitator ⁽¹⁾	1	0	1	SPED Teachers	2	0	2
Social Worker ⁽¹⁾	0	1	1	Social Worker ⁽¹⁾	0	1	1	Inclusion Facilitator	1	0	1
School Psychologist	1	0	1	School Psychologist ⁽¹⁾	0	1	1	School Psychologist	1	0	1
Specialists ⁽¹⁾	4	2	6	Specialists	4	0	4	Social Worker ⁽¹⁾	0	1	1
Team Chair	1	0	1	OT / PT / Vision Specialist / Adaptive PE ⁽¹⁾	0	4	1	Speech Pathologist	1	0	1
OT	1	0	1	Speech and Language ⁽¹⁾	0	3	1	School Nurse	1	0	1
Speech and Language	1	0	1	ELL ⁽¹⁾	0	2	1	Specialists ⁽¹⁾	4	2	6
IT ⁽¹⁾	0	1	1	Principal	1	0	1	ELL	2	0	2
ELL ⁽¹⁾	1	1	2	Admin Assistant	1	0	1	Literacy Specialists	1	1	2
Principal	1	0	1	Nurse	1	0	1	ELA Aides (4 days)	0	2	2
Assistant Principal ⁽¹⁾	0	1	1	Literacy Specialist	1	0	1	Math Coach (4 days)	0	1	1
Admin Assistant	1	0	1	Literacy Aides ⁽¹⁾	0	2	1	OT / PT / Vision Specialist / Adaptive PE ⁽¹⁾	0	4	1
Nurse	1	0	1	Math Coach ⁽¹⁾	0	1	1	BCBA ⁽¹⁾	0	1	1
Literacy Specialist	1	0	1	SPED Aides	15	0	15	Principal	1	0	1
Literacy Aides	0	3	3	Custodians ⁽²⁾	1	1	1	Admin Assistant	1	0	1
Math Coach ⁽¹⁾	0	1	1	In School Suspension ⁽¹⁾	0	3	3	Building Aide	0	1	1
RTI ⁽¹⁾	0	1	1	Building Aide ⁽¹⁾	0	1	1	Lunch Manager	0	1	1
Sped Aides/BT	18	0	18	Lunch Manager ⁽¹⁾	0	1	1	Lunch Aides ⁽¹⁾	0	2	2
Achieve Interns	4	0	4	Lunch Aides ⁽¹⁾	0	2	2	SPED Aides	14	0	14
Psych Interns ⁽¹⁾	0	3	1	Parent Volunteers	?	?	?	Interns	2	0	2
NE Intern	1	0	1	Other Itinerant Staff	?	?	?	In School Suspension ⁽¹⁾	3	0	2
Custodians ⁽²⁾	2	0	1					Custodians ⁽²⁾	2	0	1
In School Suspension ⁽¹⁾	0	4	4					Parent Volunteers	0	6	5
Building Aide	0	1	1								
Lunch Manager ⁽¹⁾	0	1	1								
Lunch Attendants ⁽¹⁾	0	3	3								
Parent Volunteers	0	6	5								
Total	67	30	93	Total	44	22	58	Total	59	22	75

⁽¹⁾ PT staff work a variety of schedules. Some staff can easily share (which has been identified). Sharing for other PT staff is limited because the schedules frequently overlap.

⁽²⁾ Separate shifts, overlap between 2:30-3:30 PM

Parking Needs | Projected Requirements

Angier (465 Students)				Zervas (490 Students)				Cabot (480 Students)			
Position	Quantity (FT)	Quantity (PT)	Number of Spots	Position	Quantity (FT)	Quantity (PT)	Number of Spots	Position	Quantity (FT)	Quantity (PT)	Number of Spots
Classroom Teachers	24	0	24	Classroom Teachers	24	0	24	Classroom Teachers	24	0	24
SPED Teachers	8	0	7	SPED Teachers	5	0	5	SPED Co-Teachers	3	0	3
Integrated Facilitator	2	0	2	Inclusion Facilitator	2	0	2	SPED Teachers	6	0	6
Social Worker	1	0	1	Social Worker	1	0	1	Inclusion Facilitator	1	0	1
School Psychologist	1	0	1	School Psychologist	1	0	1	School Psychologist	1	0	1
Specialists	4	2	6	Specialists	5	2	6	Social Worker ⁽¹⁾	1	0	1
Team Chair	1	0	1	OT / PT / Vision Specialist / Adaptive PE ⁽¹⁾	0	4	2	Speech Pathologist	0	1	1
OT	1	0	1	Speech and Language ⁽¹⁾	0	3	2	School Nurse	1	0	1
Speech and Language	1	0	1	ELL	0	2	2	Specialists ⁽¹⁾	4	3	7
IT	1	0	1	Principal	1	0	1	ELL	2	0	2
ELL	2	0	2	Assistant Principal	1	0	1	Literacy Specialist	1	1	2
Principal	1	0	1	Admin Assistant	1	0	1	ELA Aides	0	2	2
Assistant Principal	1	0	1	Nurse	1	0	1	Math Coach	1	0	1
Admin Assistant	1	0	1	Literacy Specialist	1	0	1	OT / PT / Vision Specialist / Adaptive PE ⁽¹⁾	0	4	1
Nurse	1	0	1	Literacy Aides ⁽¹⁾	2	2	4	BCBA	0	1	1
Literacy Specialist	2	0	2	Math Coach	1	0	1	Principal	1	0	1
Literacy Aides ⁽¹⁾	5	0	5	Sped Aides	22	0	22	Assistant Principal	1	0	1
Math Coach	1	0	1	Custodians ⁽²⁾	3	0	1	Admin Assistant	1	0	1
RTI	0	1	1	In School Suspension ⁽¹⁾	1	3	3	Building Aide	1	0	1
Sped Aides	21	0	21	Building Aide	1	0	1	Lunch Manager	0	1	1
Achieve Interns	4	0	4	Lunch Manager ⁽¹⁾	0	1	1	Lunch Aides ⁽¹⁾	0	2	2
Psych Interns	1	2	3	Lunch Aides ⁽¹⁾	0	4	4	SPED Aides	22	0	22
NE Intern	1	0	1	Parent Volunteers	0	6	6	Interns	2	0	2
Custodians ⁽²⁾	3	0	1					In School Suspension ⁽¹⁾	0	3	2
In School Suspension	1	3	3					Custodians ⁽²⁾	3	0	1
Building Aide	1	0	1					Parent Volunteers	0	6	6
Lunch Manager	0	1	1								
Lunch Attendants	0	4	4								
Parent Volunteers	0	6	6								
Total	90	19	105	Total	73	27	93	Total	76	24	94

⁽¹⁾ PT staff work a variety of schedules. Some staff can easily share (which has been identified). Sharing for other PT staff is limited because the schedules frequently overlap.

⁽²⁾ Custodians - 1 day, 2 night requires 1 parking space.

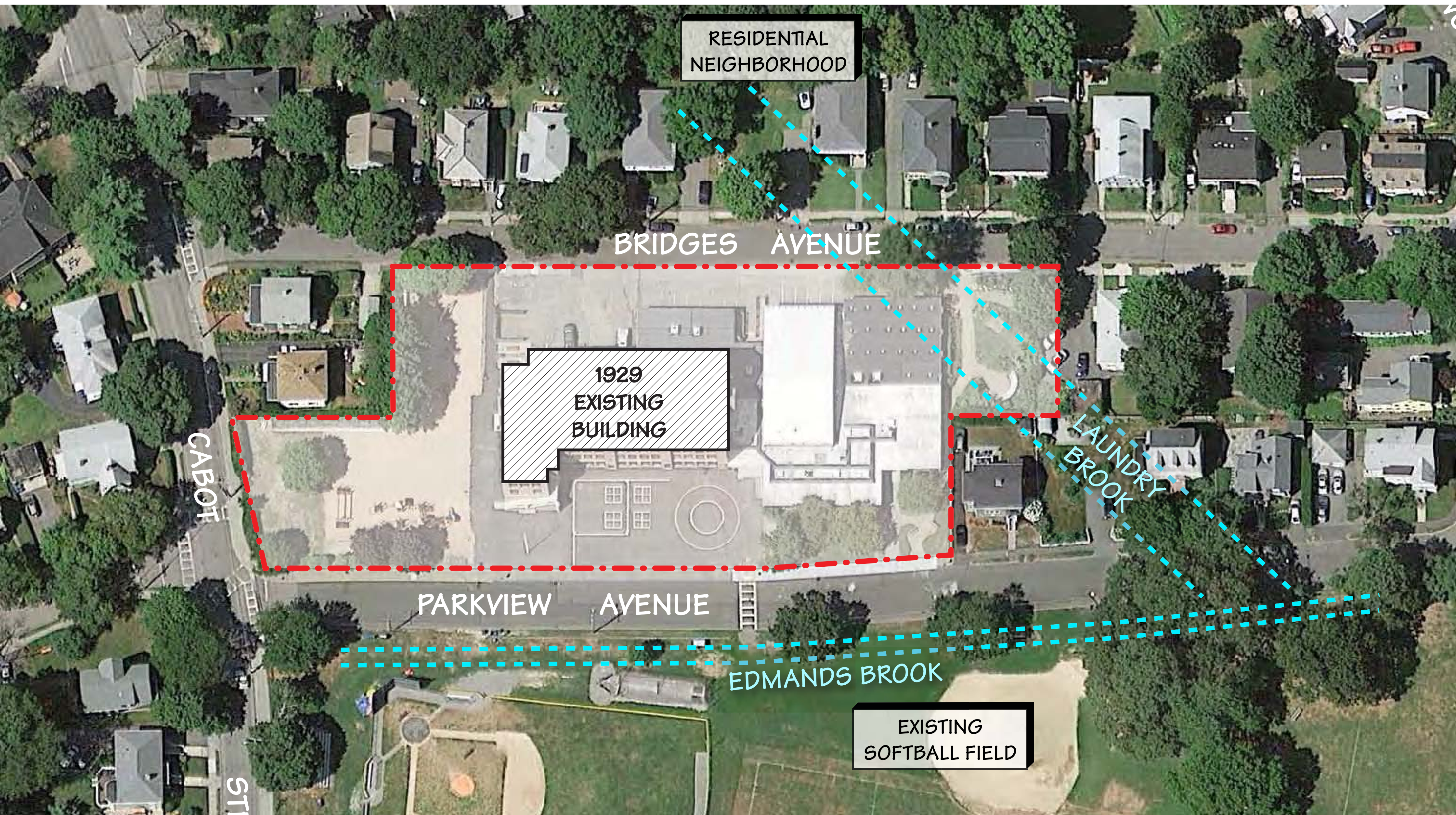
Cabot School | Cabot Neighborhood



Cabot School | Cabot Park



Cabot School | Cabot Park



RESIDENTIAL
NEIGHBORHOOD

BRIDGES AVENUE

1929
EXISTING
BUILDING

CABOT
ST

PARKVIEW AVENUE

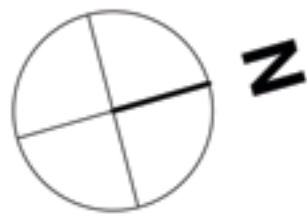
LAUNDRY
BROOK

EDMANDS BROOK

EXISTING
SOFTBALL FIELD

ST

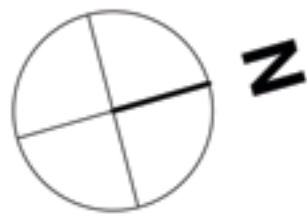
Site Plan | 45 Car Lot



	<u>Total Development Area</u>	<u>Total Parking Area</u>	<u>Parking Area Percentage of Total Park</u>
45 CARS W/ DRIVE	1.15 ac	0.47 ac	4.06%
* Total park area is 11.5 acres			



Site Plan | 28 Car Lot



	<u>Total Development Area</u>	<u>Total Parking Area</u>	<u>Parking Area Percentage of Total Park</u>
28 CARS	0.85 ac	0.31 ac	2.73%
* Total park area is 11.5 acres			

Site Plan | No Lot



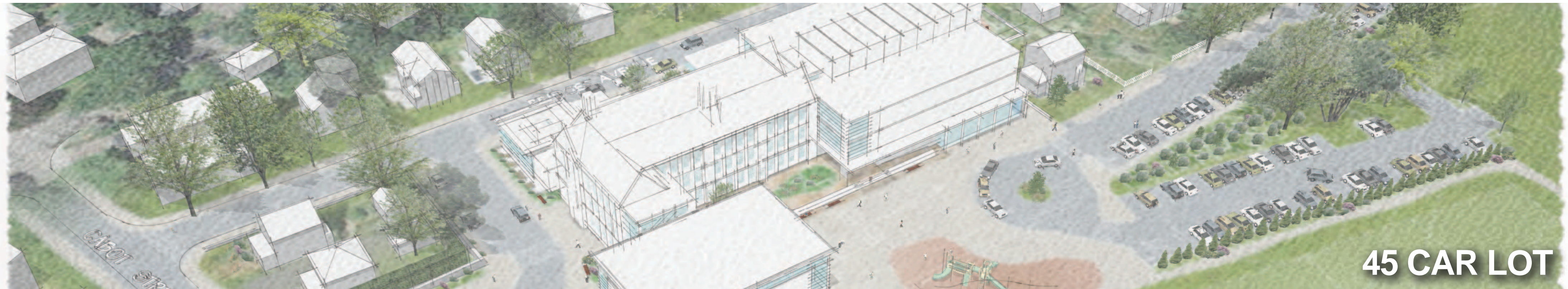
	<u>Total Development Area</u>	<u>Total Parking Area</u>	<u>Parking Area Percentage of Total Park</u>
NO LOT	0.39 ac	0.09 ac	0.79%

* Total park area is 11.5 acres



Comparison

Aerial View



Comparison

