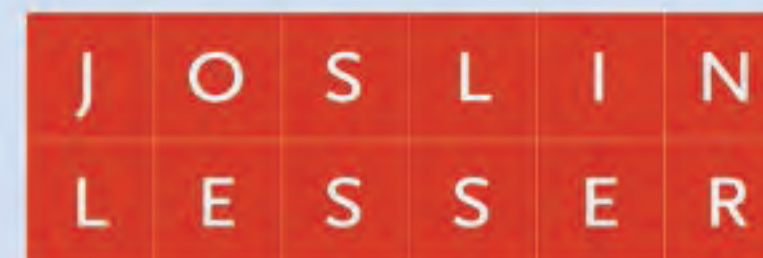


CSBC / DRC Meeting

May 07, 2015

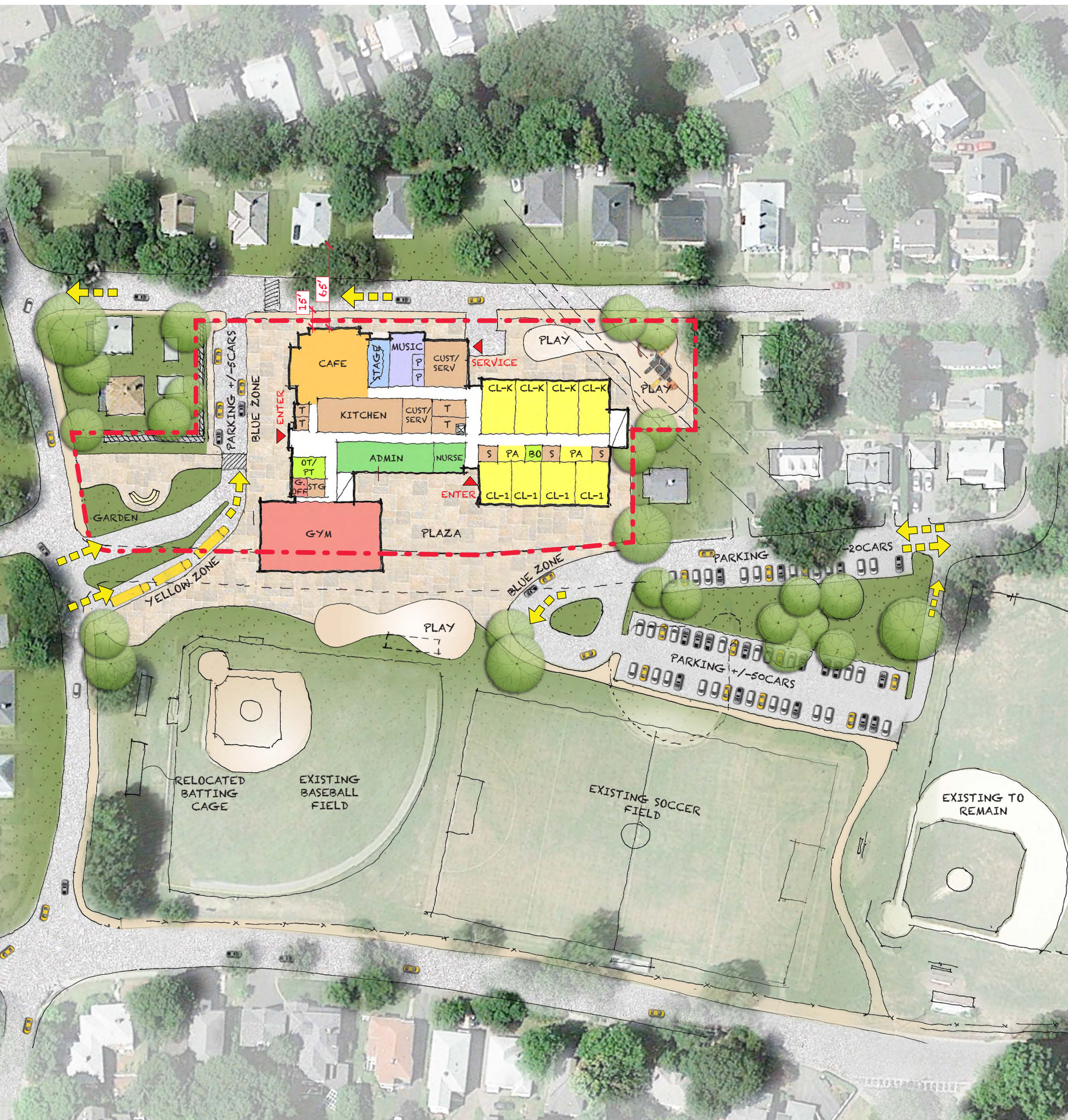


Cabot School

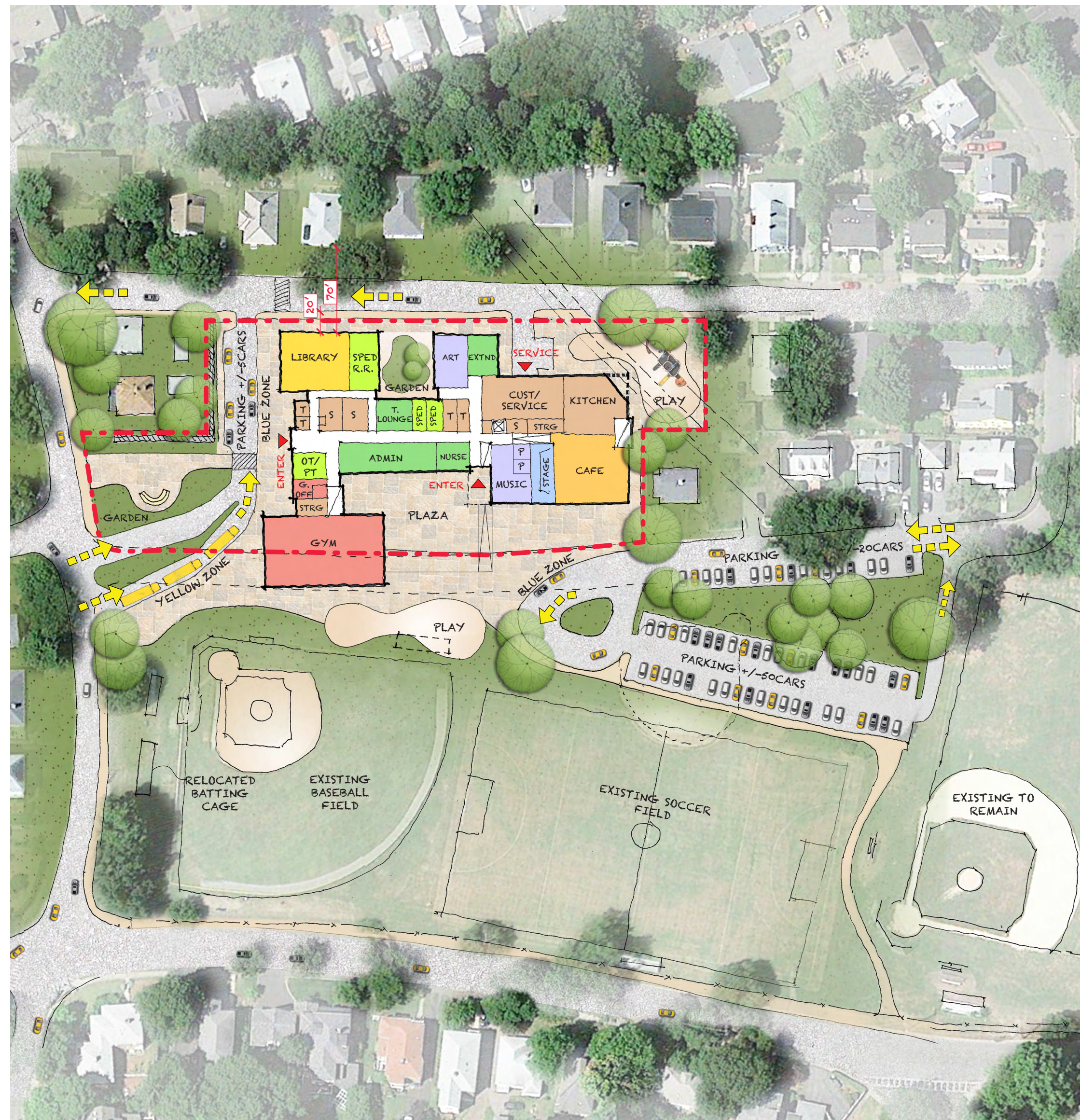


DiNisco Design
PARTNERSHIP

Renovation / Addition Overview

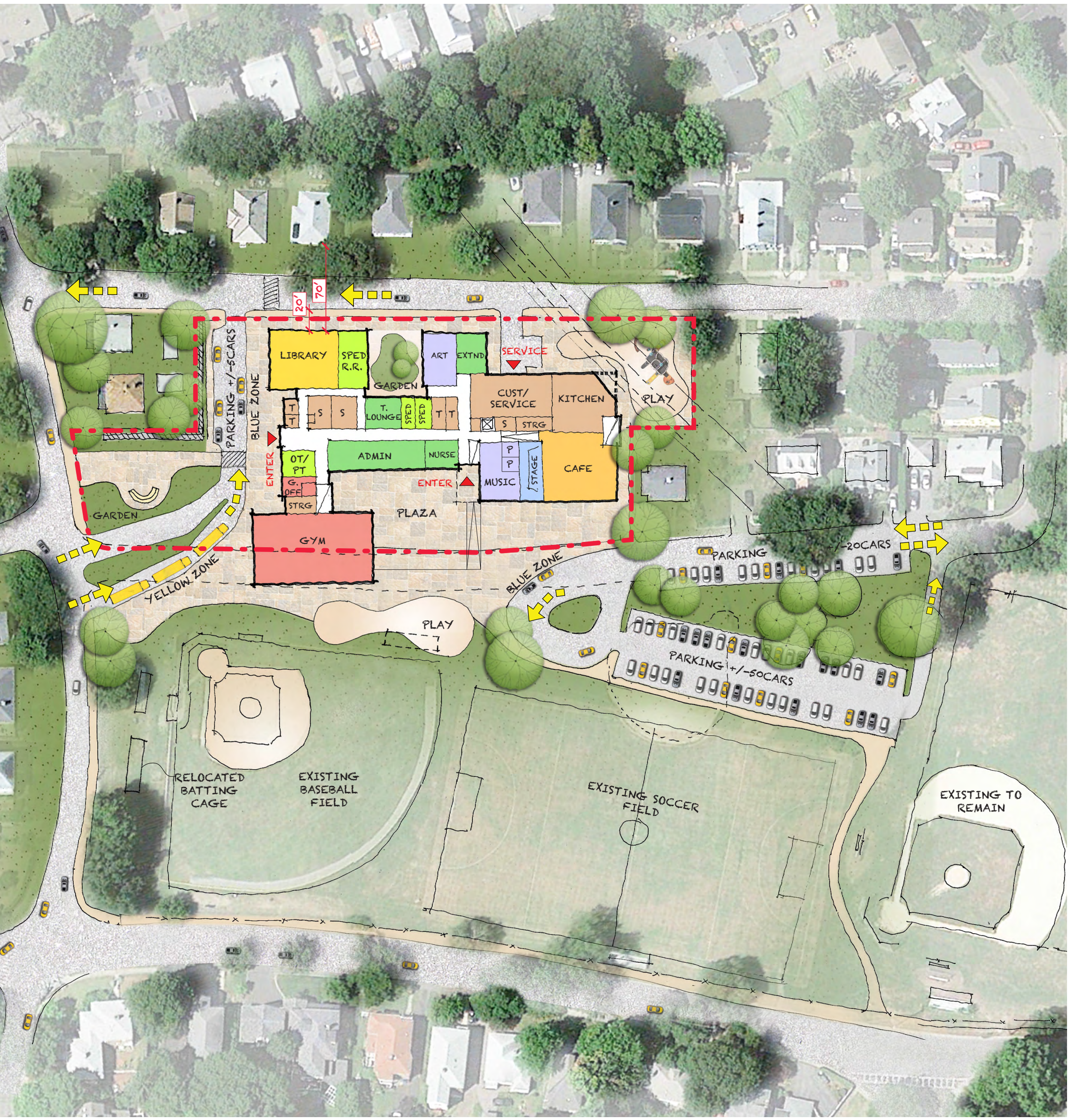


Renovation / Addition | Option A.4

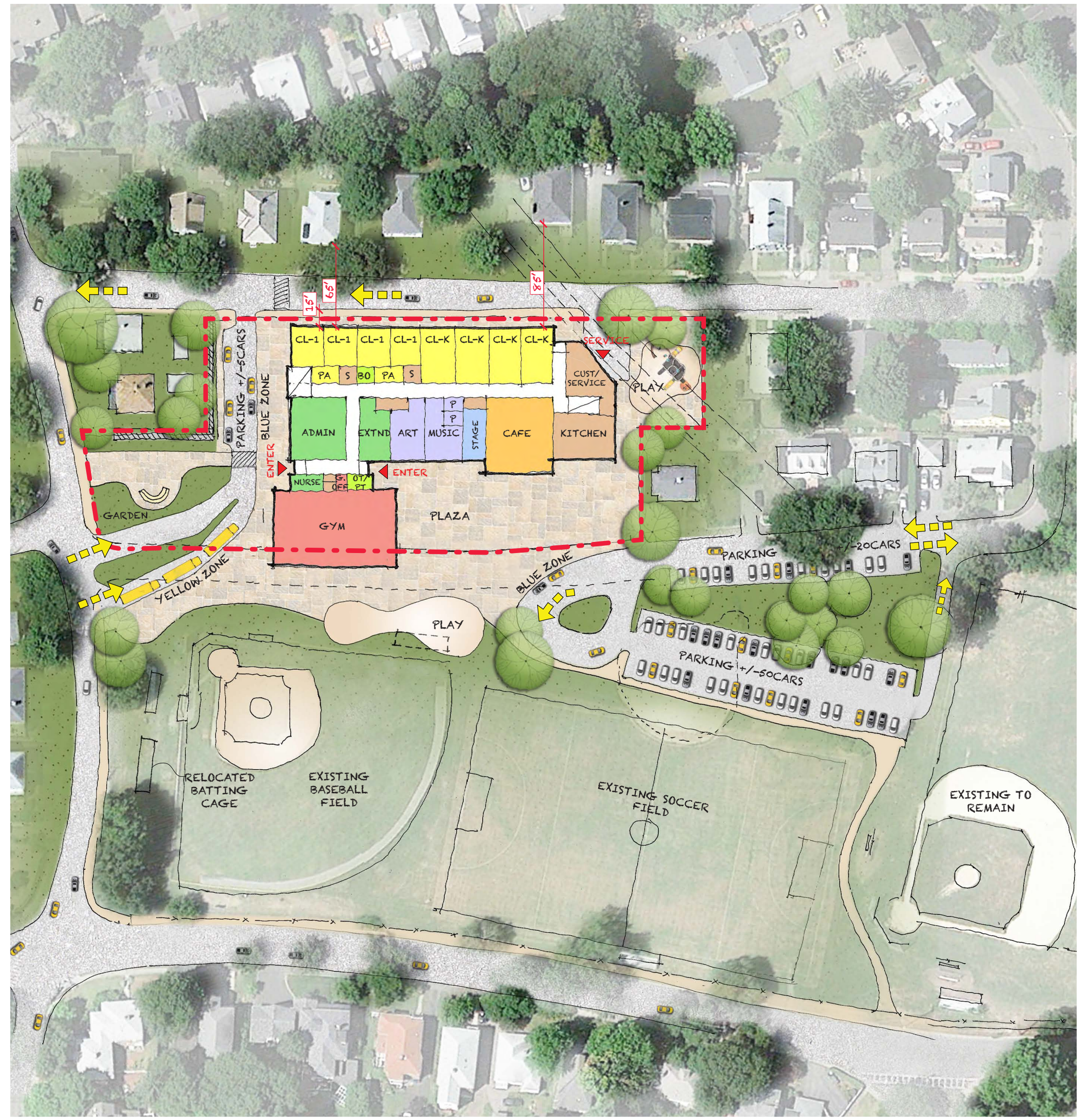


Renovation / Addition | Option A.4a

A.4a and B.4 Overview



Renovation / Addition | Option A.4a



New Construction | Option B.4

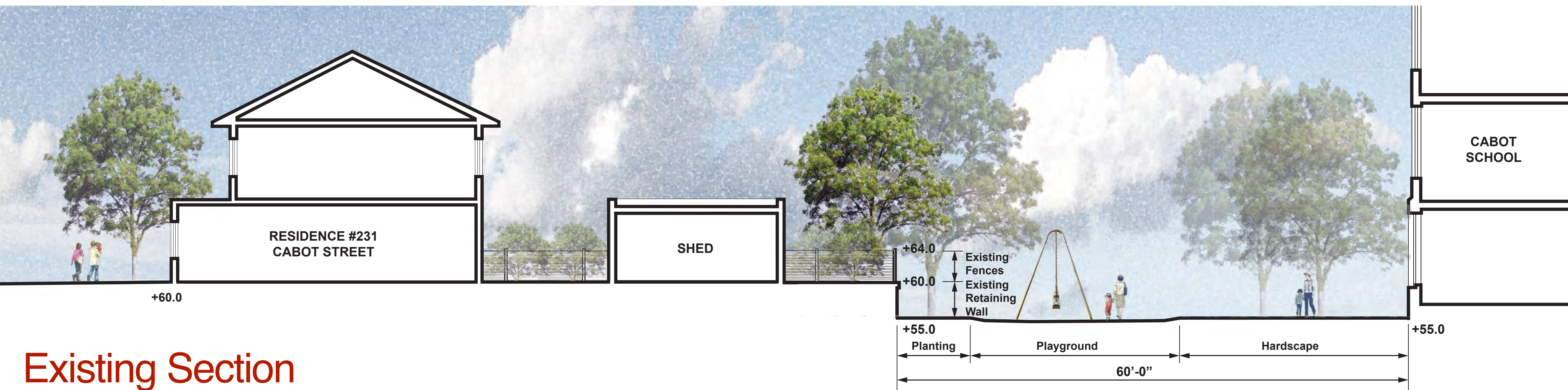
Existing Conditions



Existing Conditions



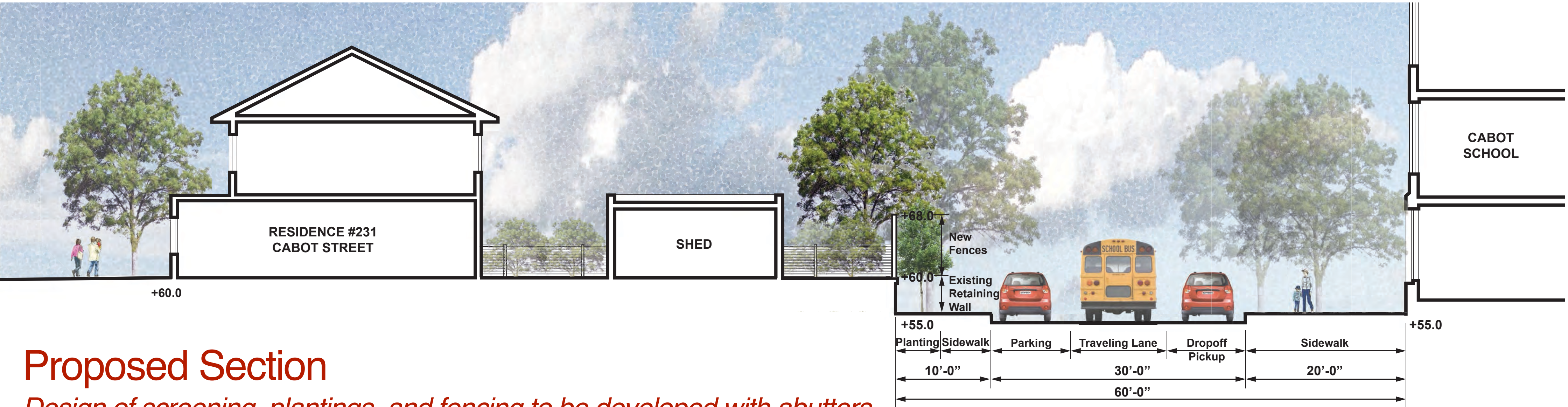
Site Sections



Existing Section

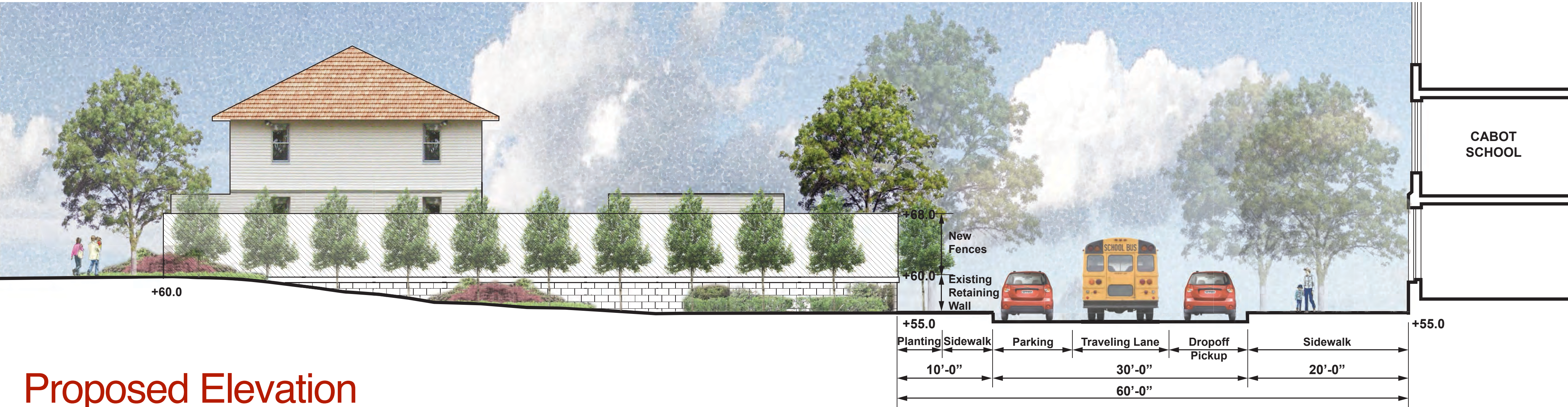


Site Sections



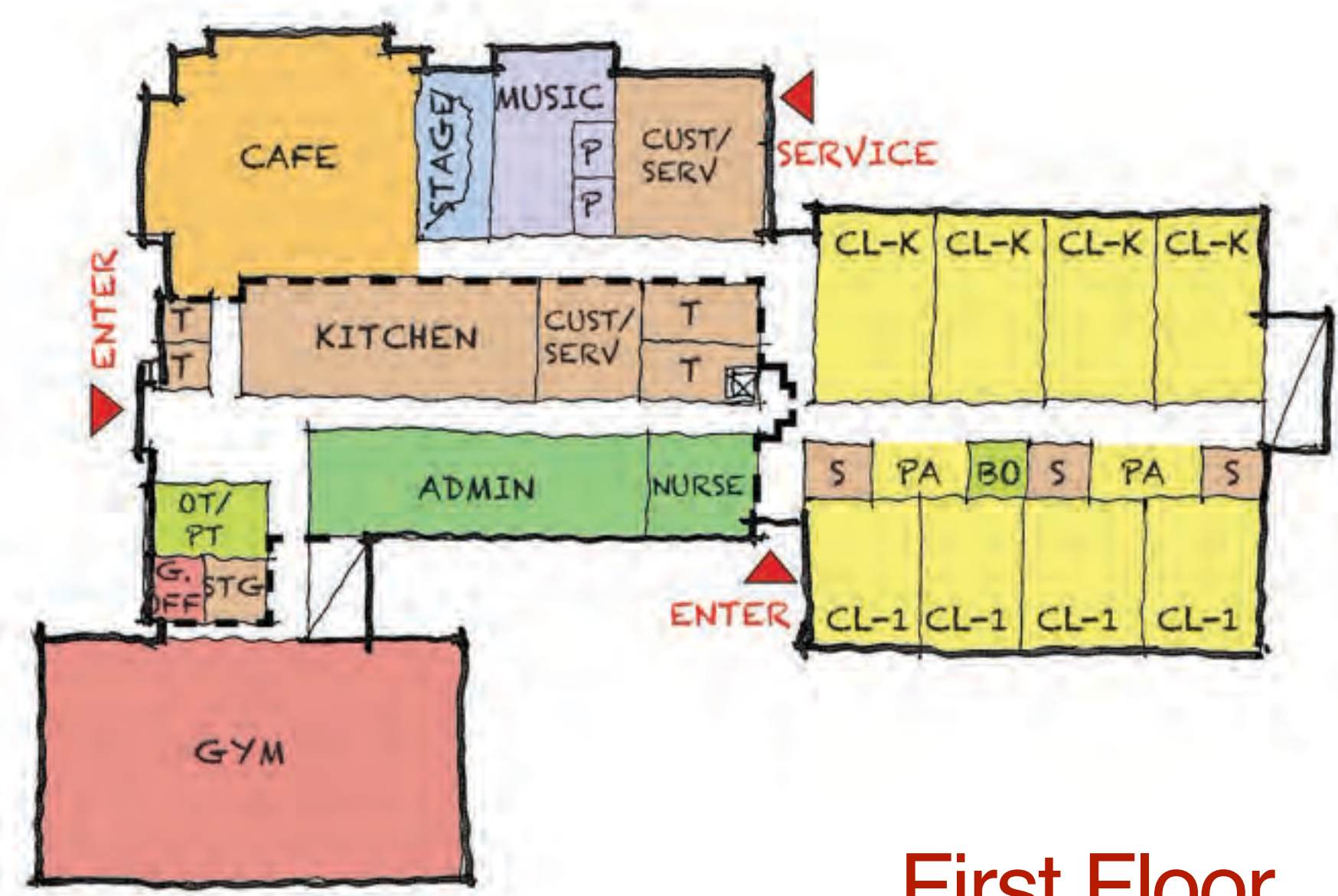
Proposed Section

Design of screening, plantings, and fencing to be developed with abutters.

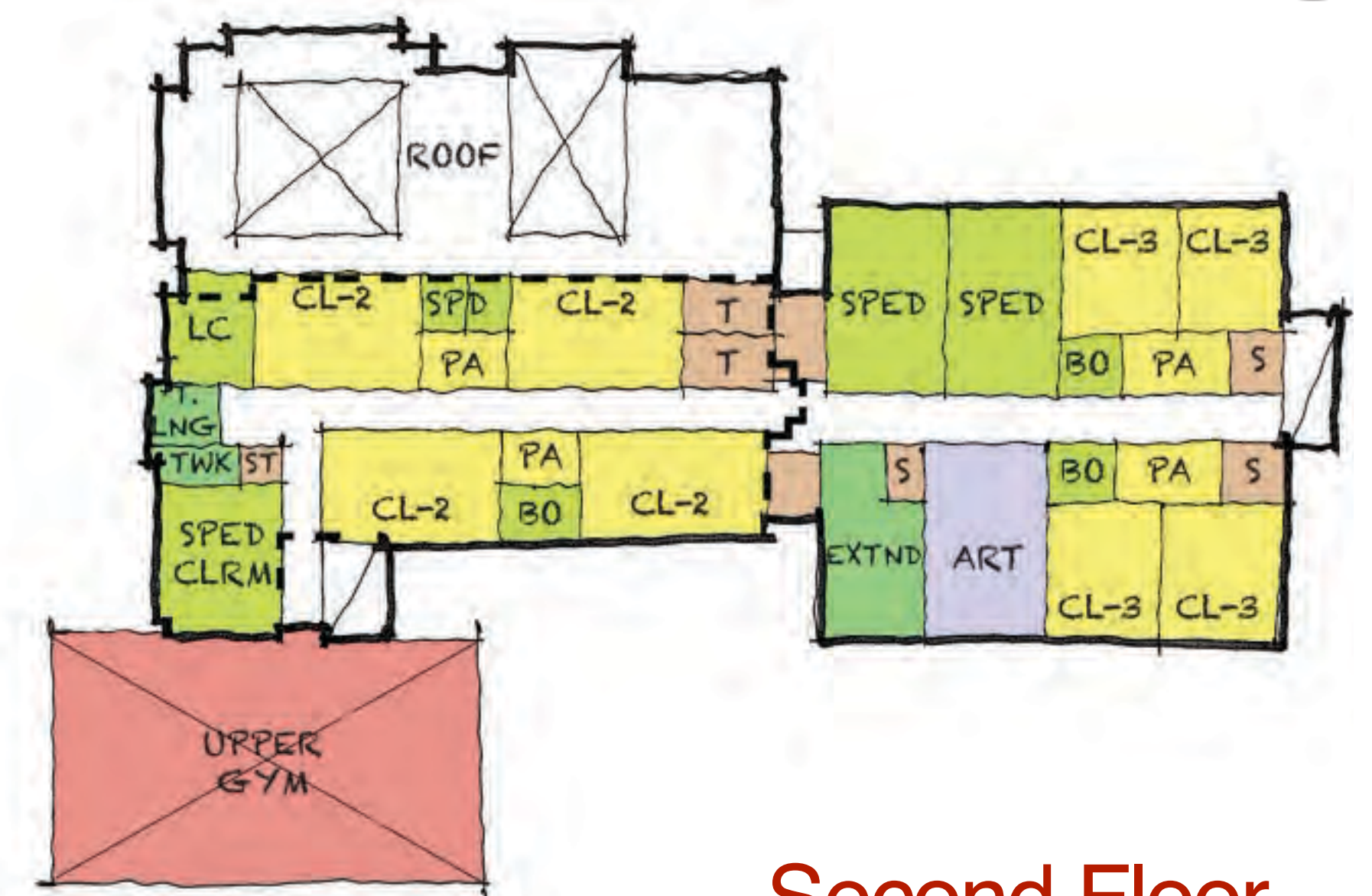


Proposed Elevation

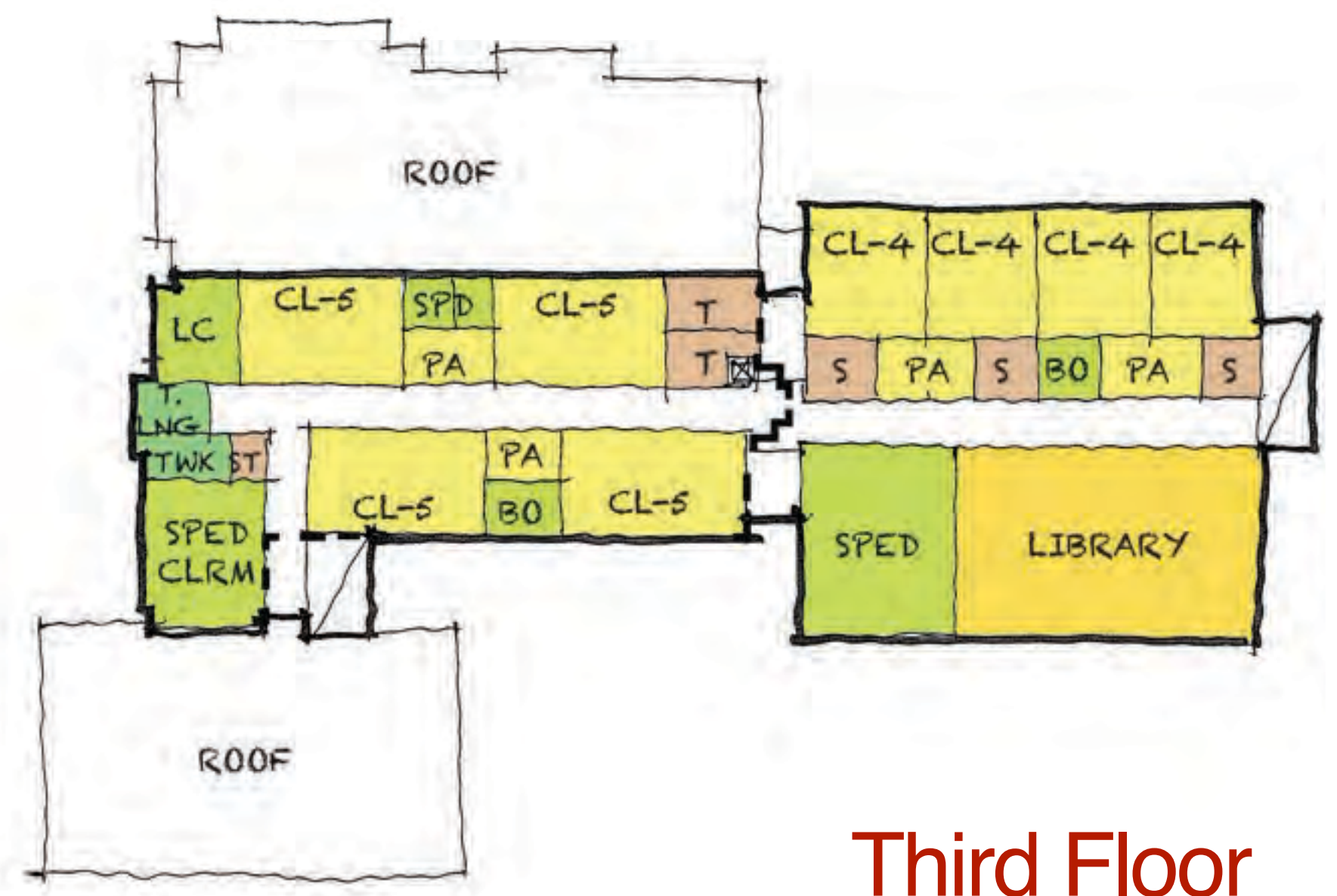
Renovation Addition I A.4



First Floor



Second Floor



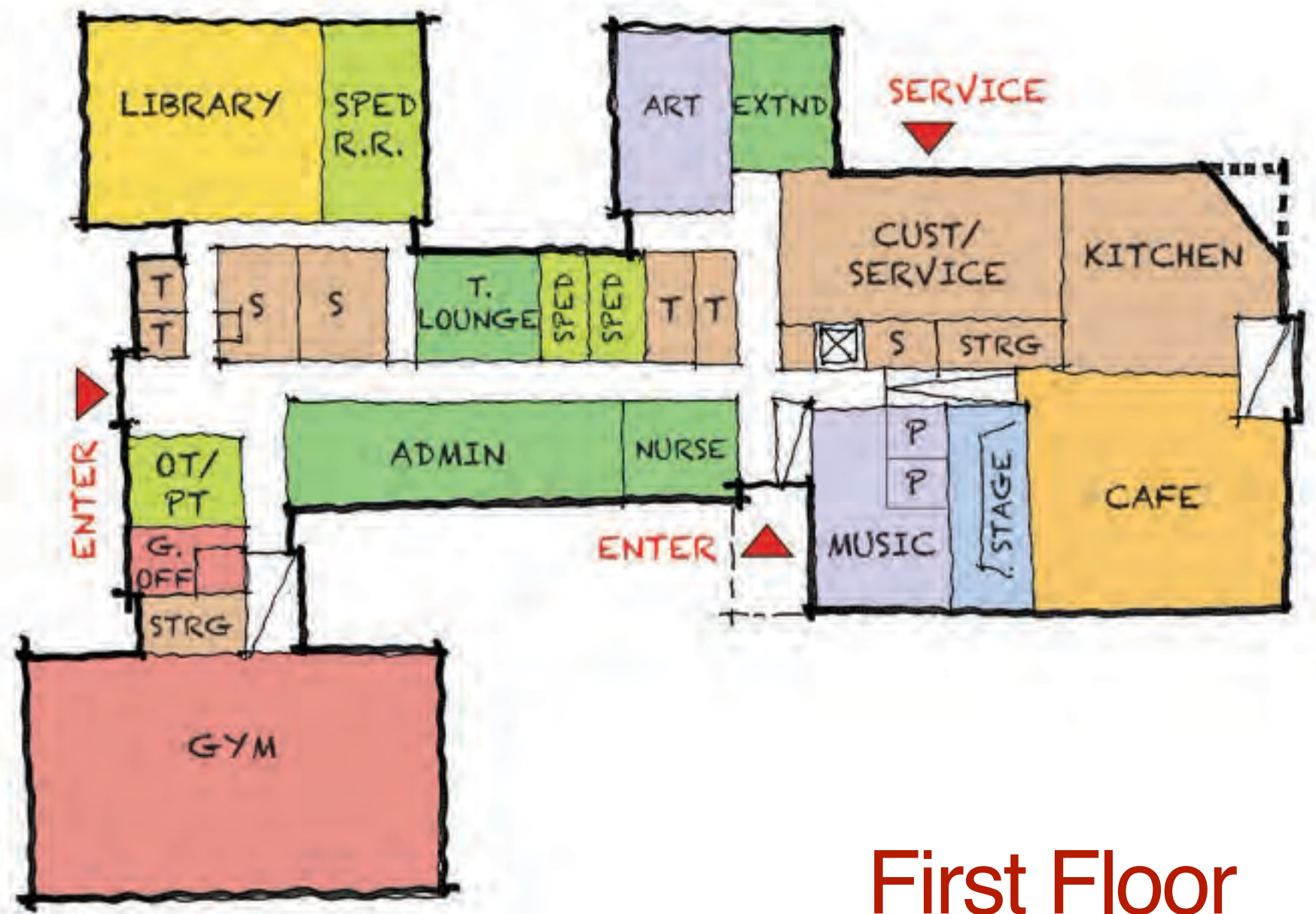
Third Floor

LEGEND

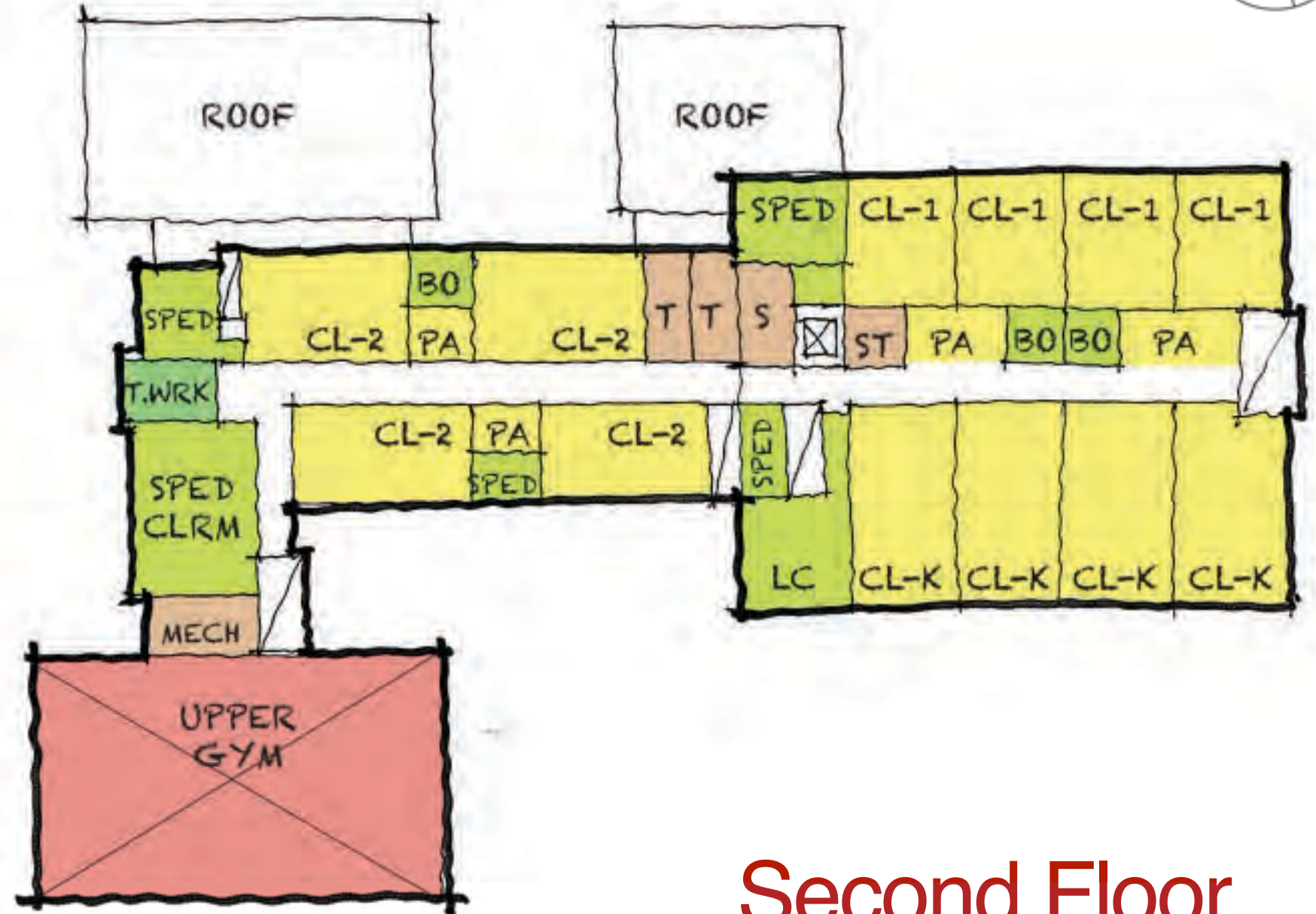
- CLASSROOM
- SPECIAL EDUCATION
- LIBRARY
- ART/MUSIC
- STAGE
- GYMNASIUM
- KITCHEN/CAFETERIA
- ADMINISTRATION
- BUILDING SERVICES

- * Variations within scheme will be studied
- Core / Academics ideally organized **vertically or horizontally** - design is currently a hybrid
- Gym can be **zoned off**
- Kindergarten + 1st grade **ground floor**
- Academics on **three floors**
- **Limited floor-to-floor heights** due to salvage of 1929 building

Renovation Addition I A.4a



First Floor

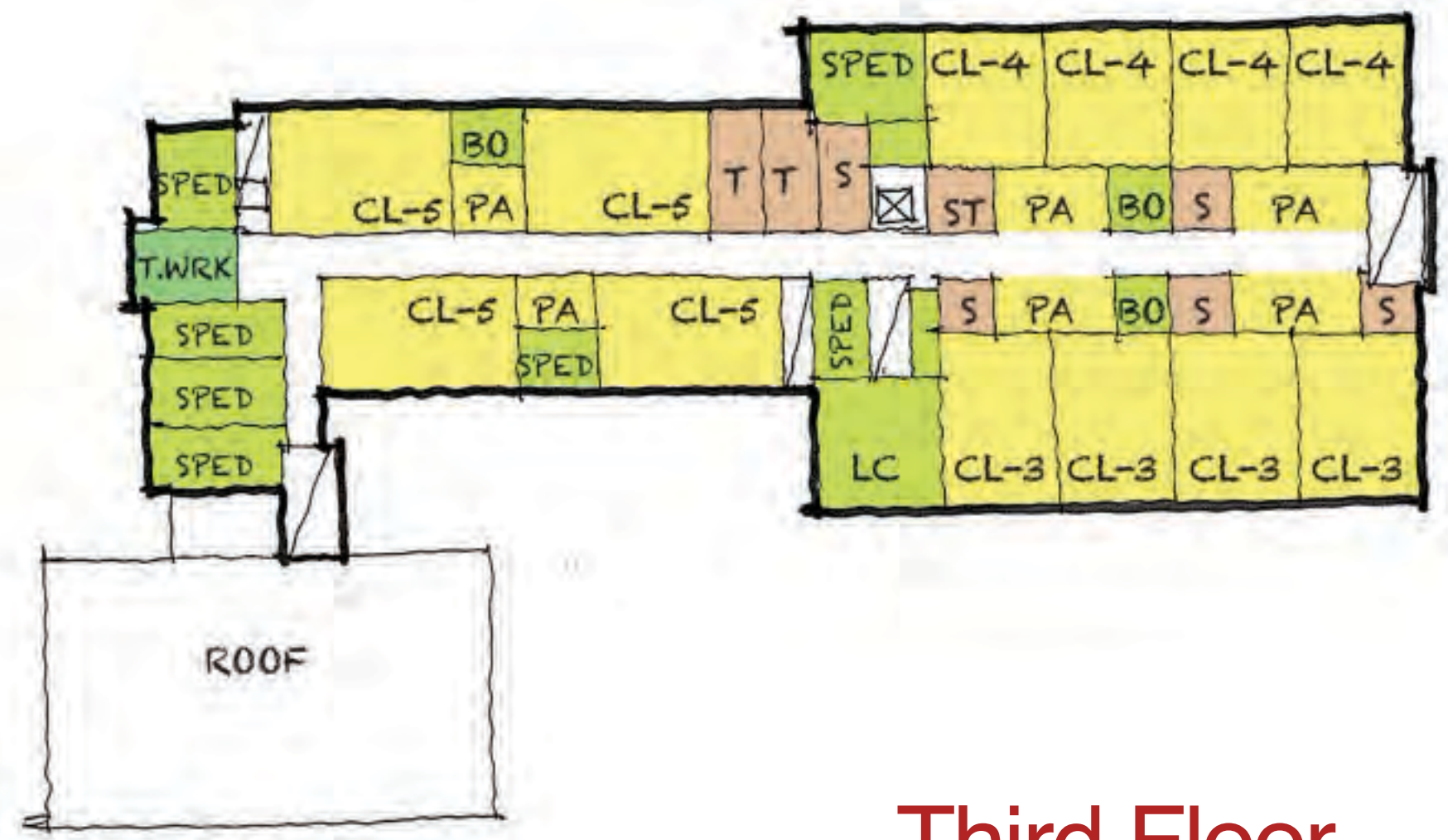


Second Floor

LEGEND

- CLASSROOM
- SPECIAL EDUCATION
- LIBRARY
- ART/MUSIC
- STAGE
- GYMNASIUM
- KITCHEN/CAFETERIA
- ADMINISTRATION
- BUILDING SERVICES

- * Variations within scheme will be studied
- Core / Academics organized **horizontally.**
- Gym can be **zoned off**
- Kindergarten + 1st grade on **2nd floor**
- Academics on **two floors**
- **Limited floor-to-floor heights** due to salvage of 1929 building
- Cafeteria wing **lowered 30 inches**



Third Floor

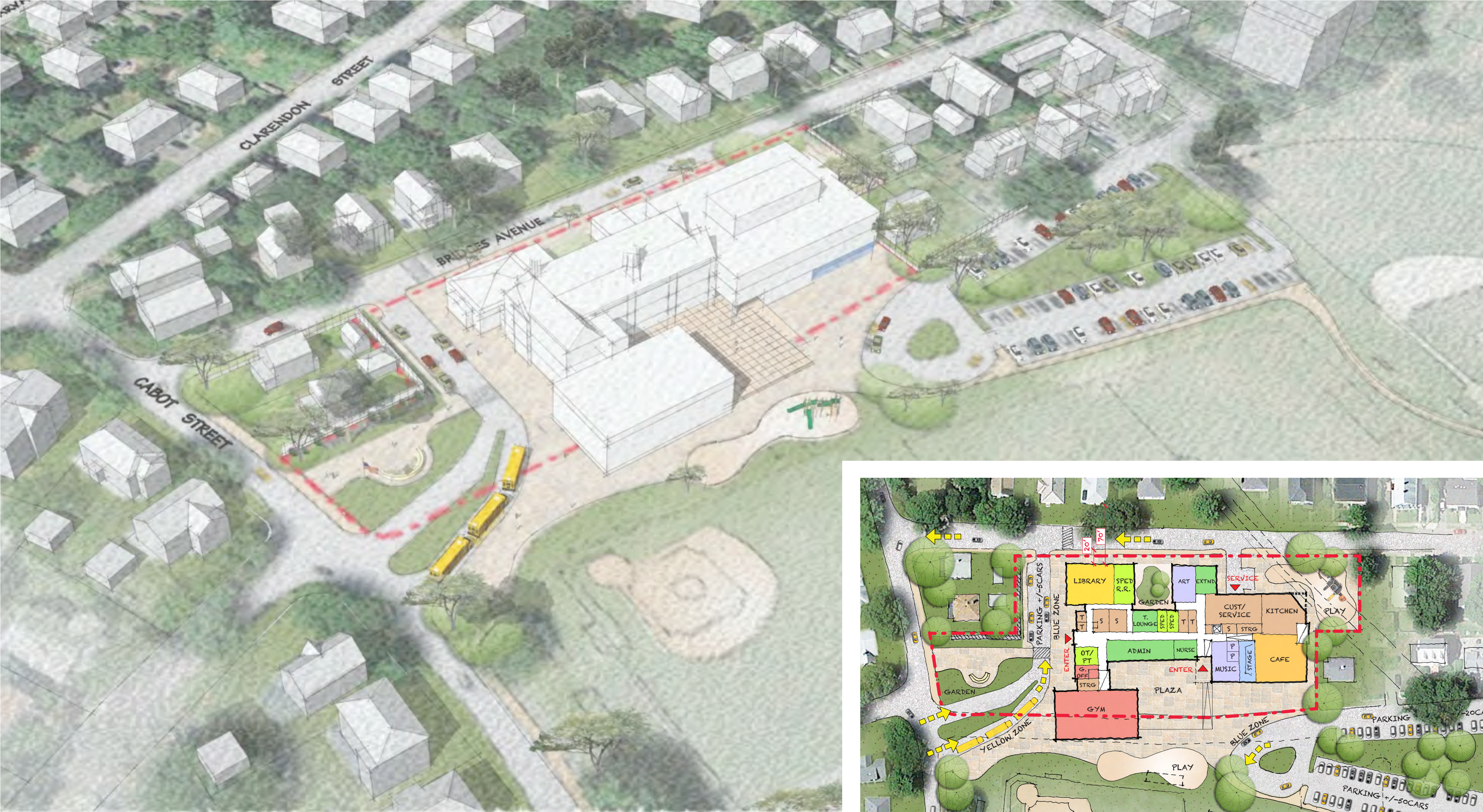
Renovation Addition I A.4a

Aerial View



Renovation Addition I A.4a

Aerial View



Renovation Addition I A.4a

Aerial View



Renovation Addition I A.4a

Aerial View



Renovation Addition I A.4a

View North on Parkview Ave.



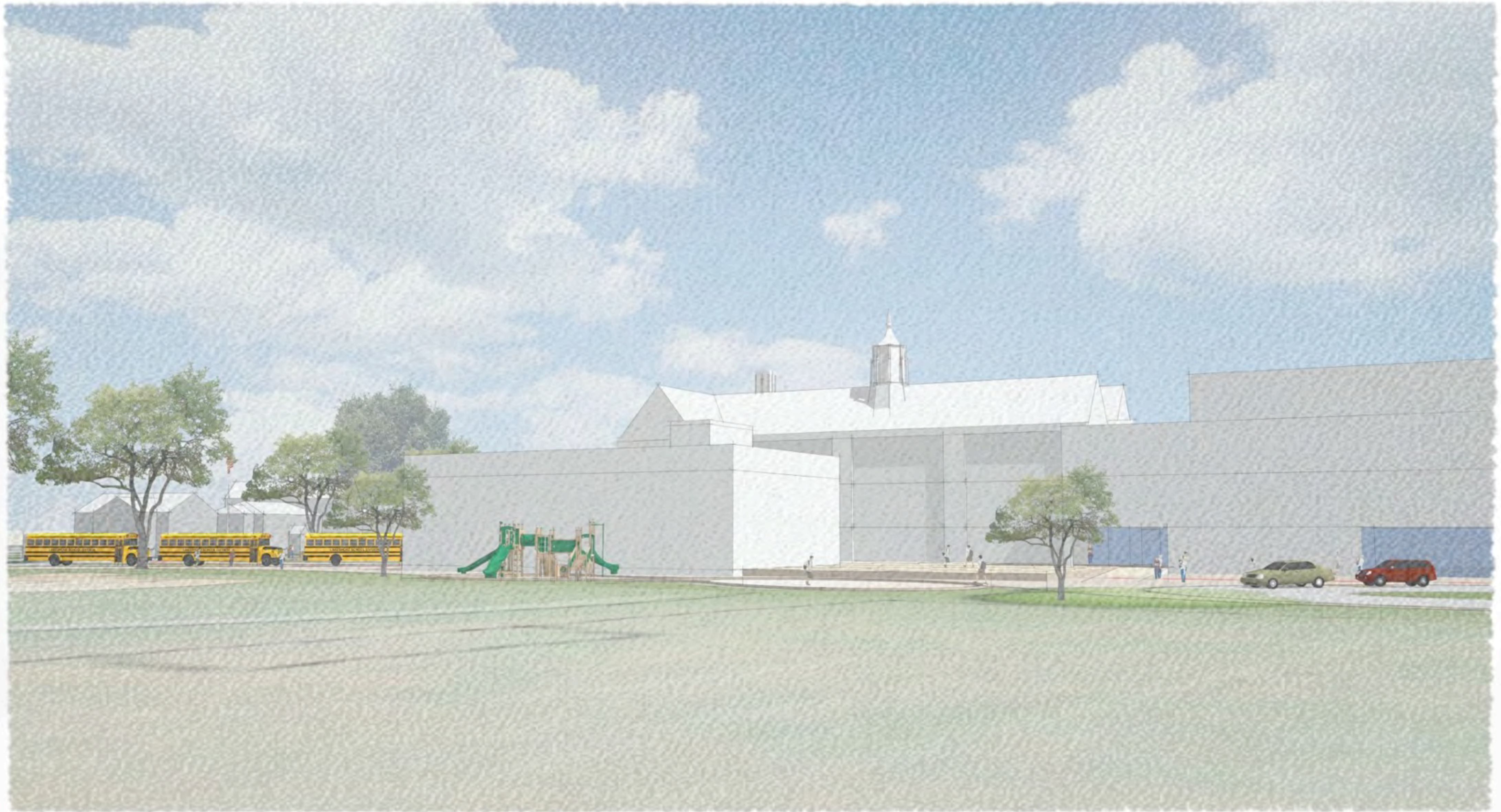
Renovation Addition I A.4a

View South on Parkview Ave.

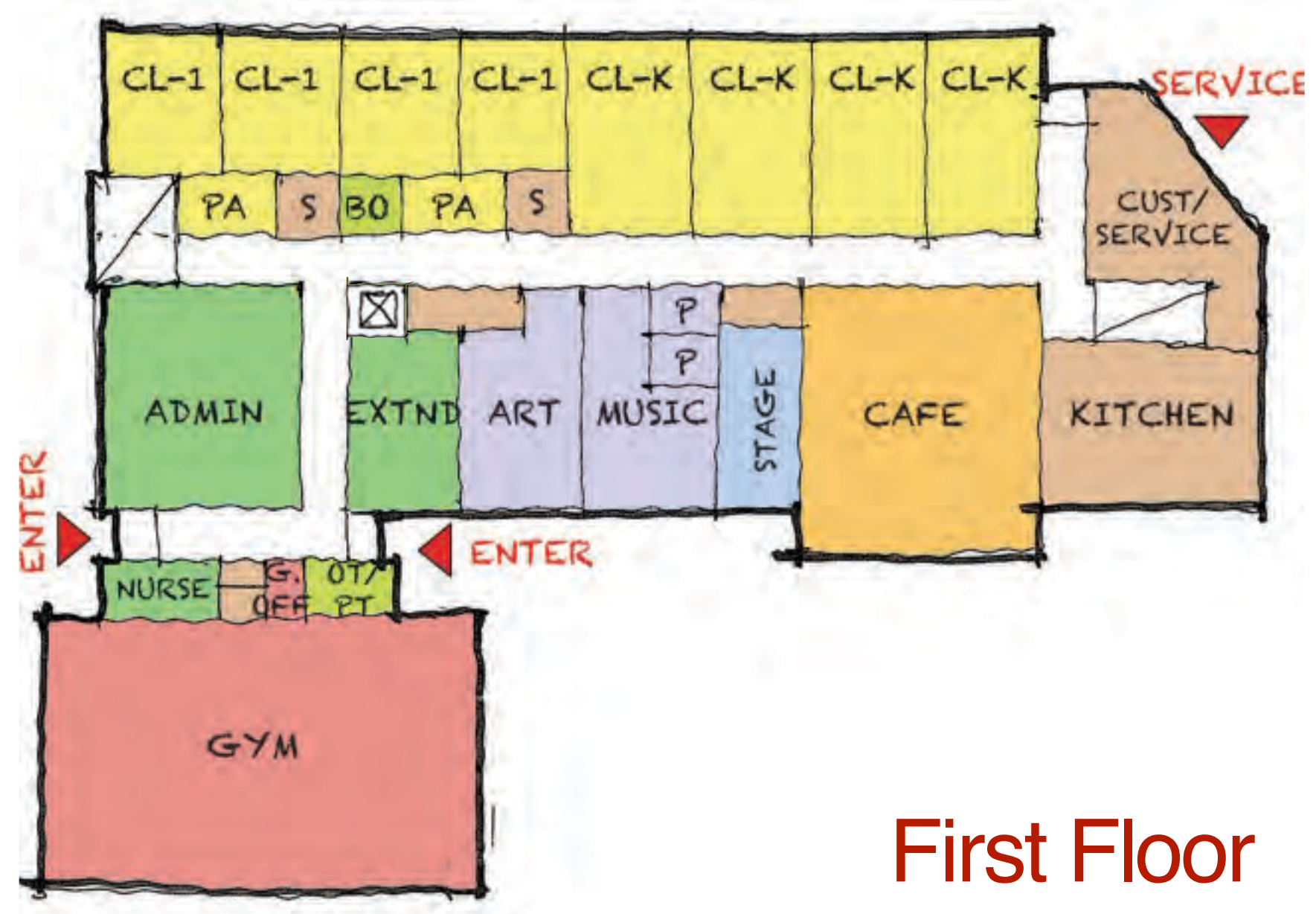


Renovation Addition I A.4a

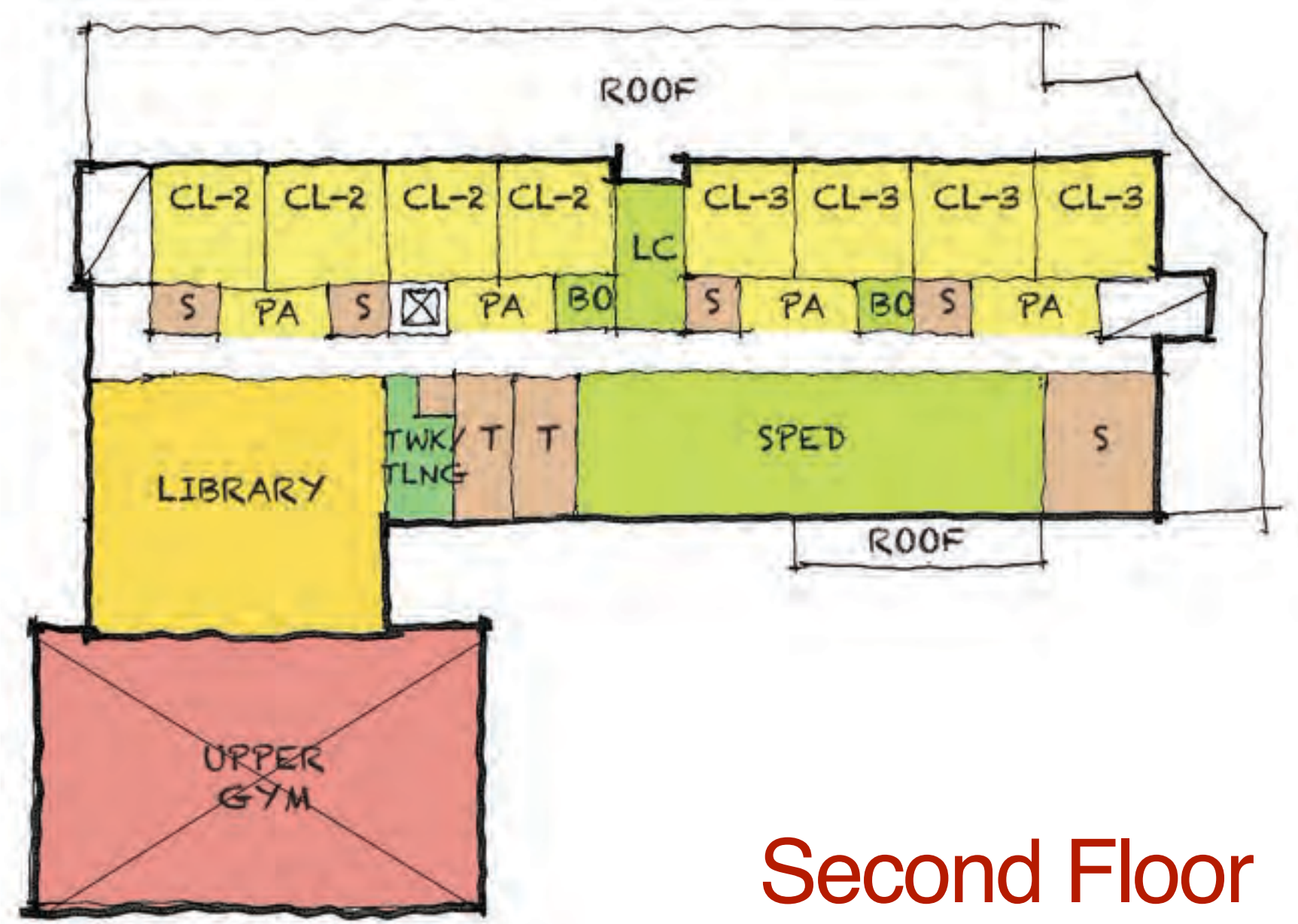
View from Cabot Park



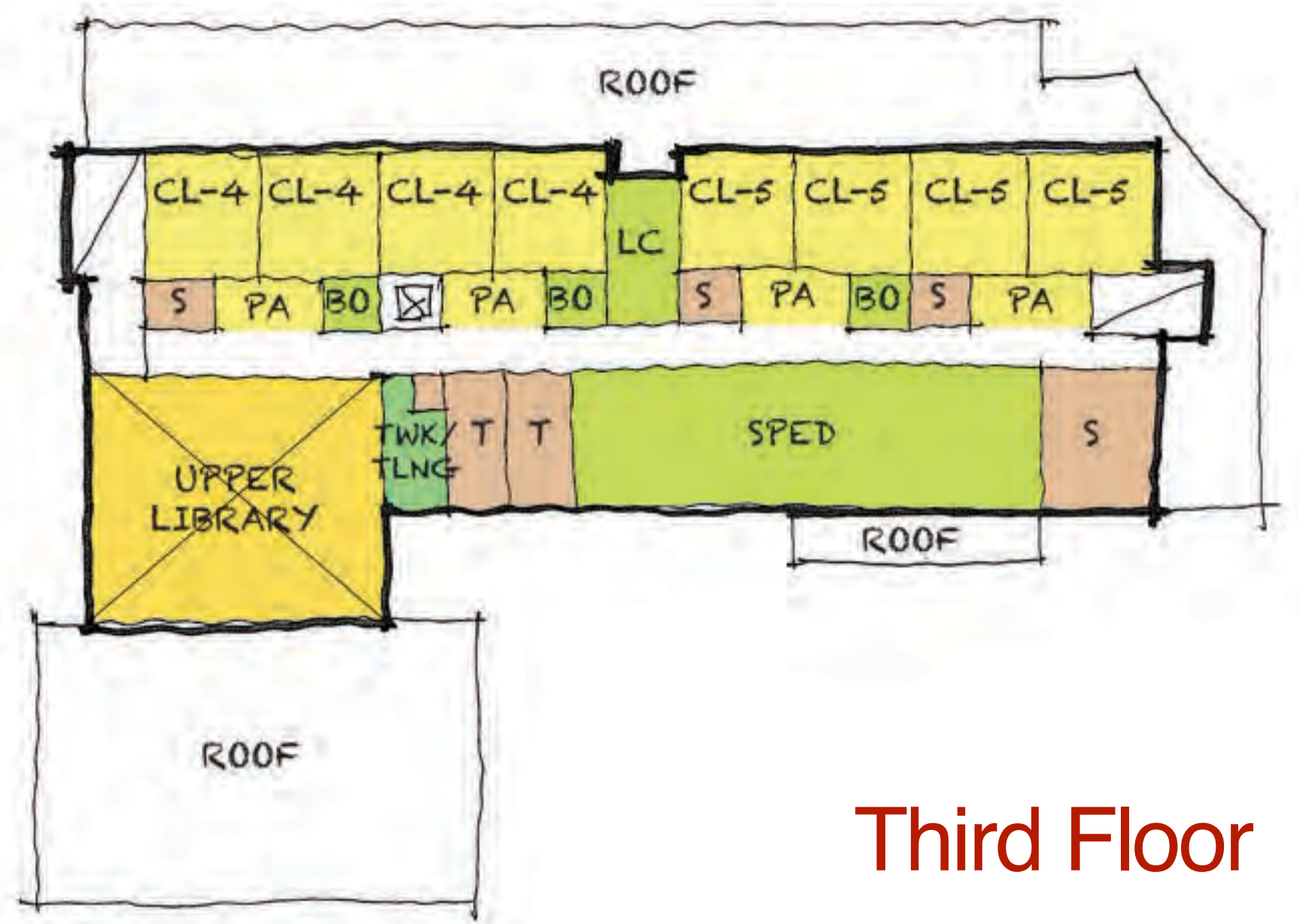
New Construction I B.4



First Floor



Second Floor



Third Floor

LEGEND

- CLASSROOM
- SPECIAL EDUCATION
- LIBRARY
- ART/MUSIC
- STAGE
- GYMNASIUM
- KITCHEN/CAFETERIA
- ADMINISTRATION
- BUILDING SERVICES

- * Variations within scheme will be studied
- Core / Academics organized **vertically**
 - Gym can be **zoned off**
 - Kindergarten + 1st grade **ground floor**
 - Academics on **three floors**

New Construction | B.4

Aerial View



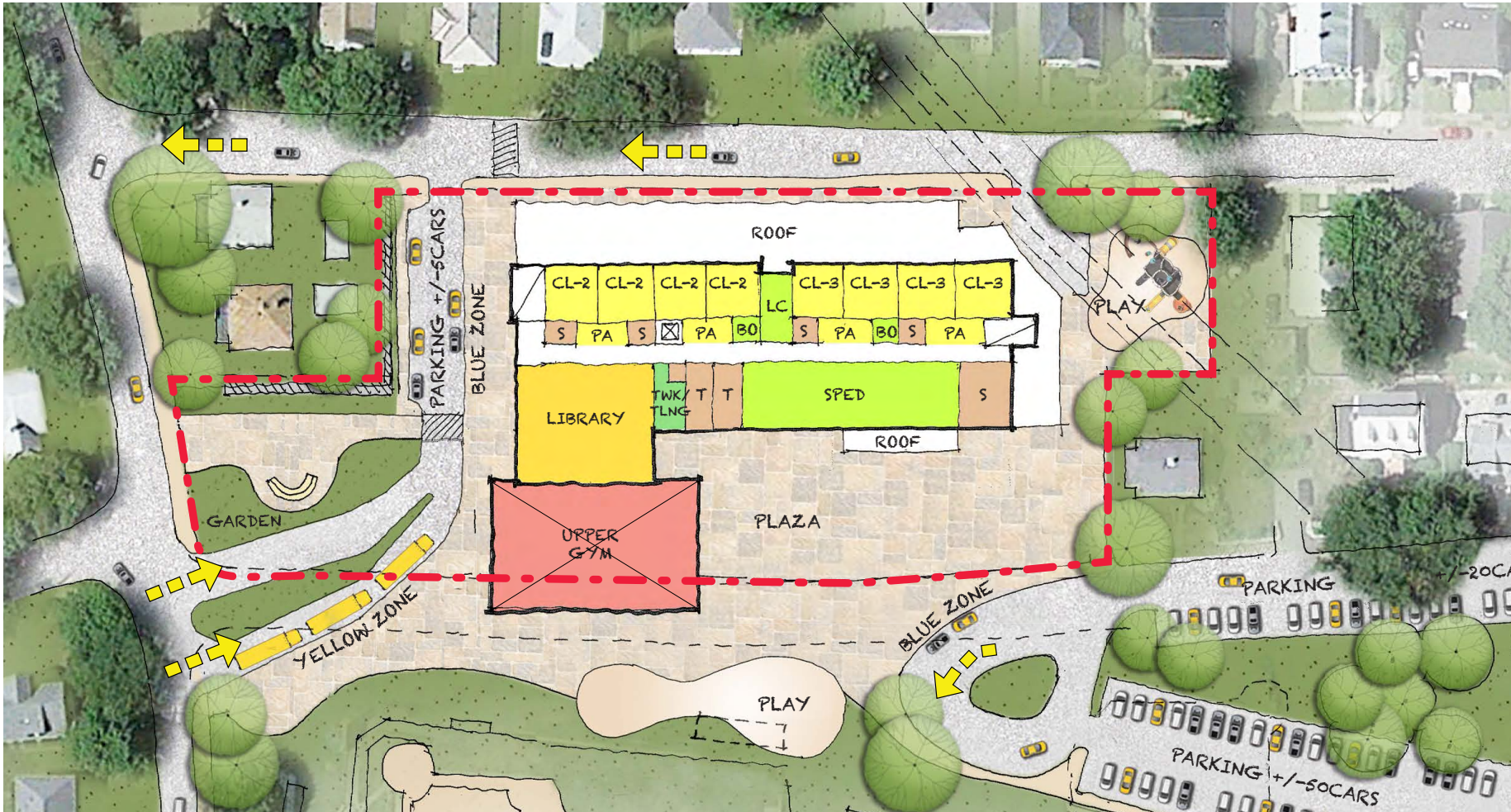
New Construction I B.4

Aerial View



New Construction I B.4

Aerial View



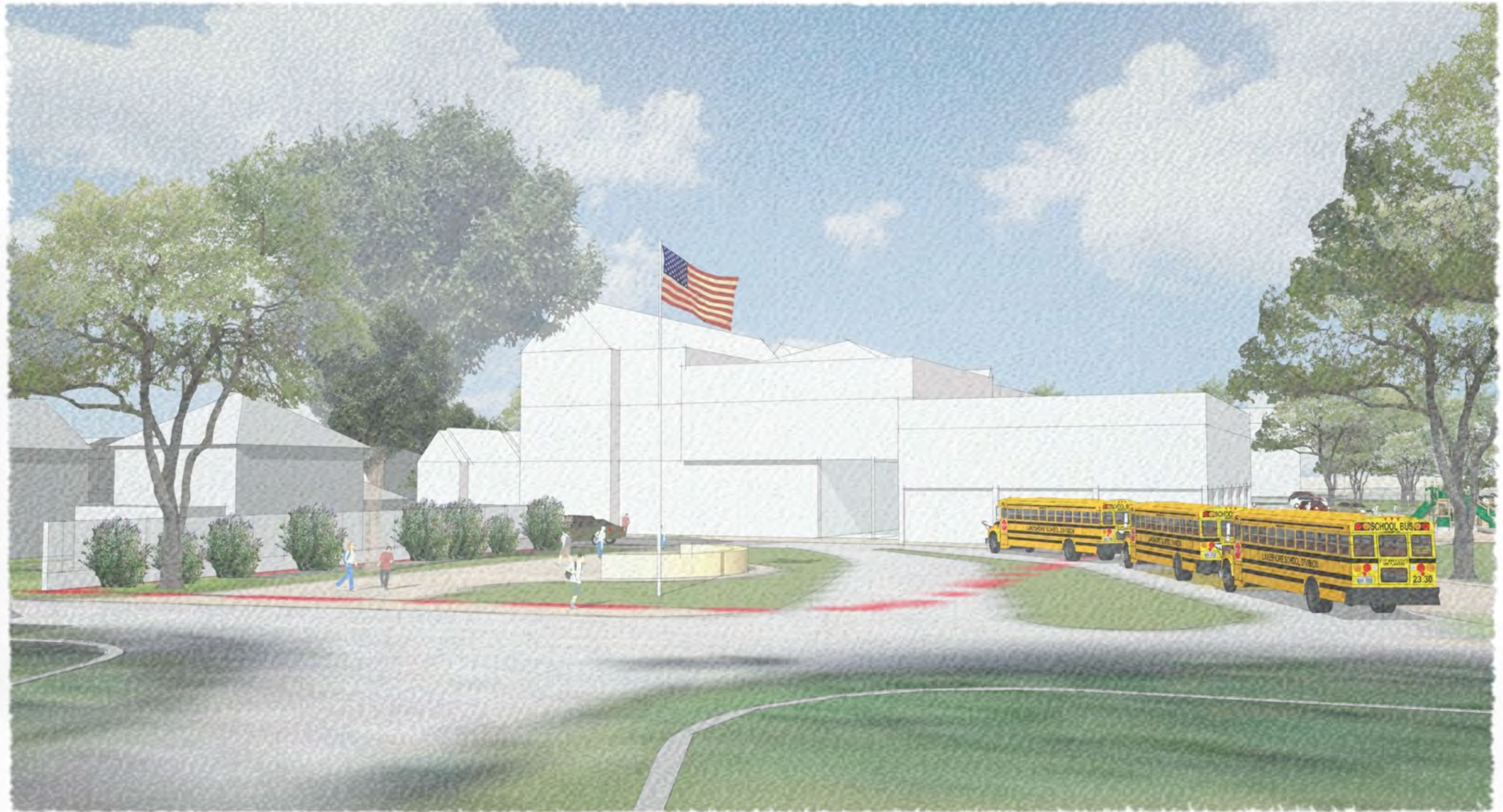
New Construction | B.4

Aerial View



New Construction | B.4

View North on Parkview Ave.



New Construction | B.4

View South on Parkview Ave.

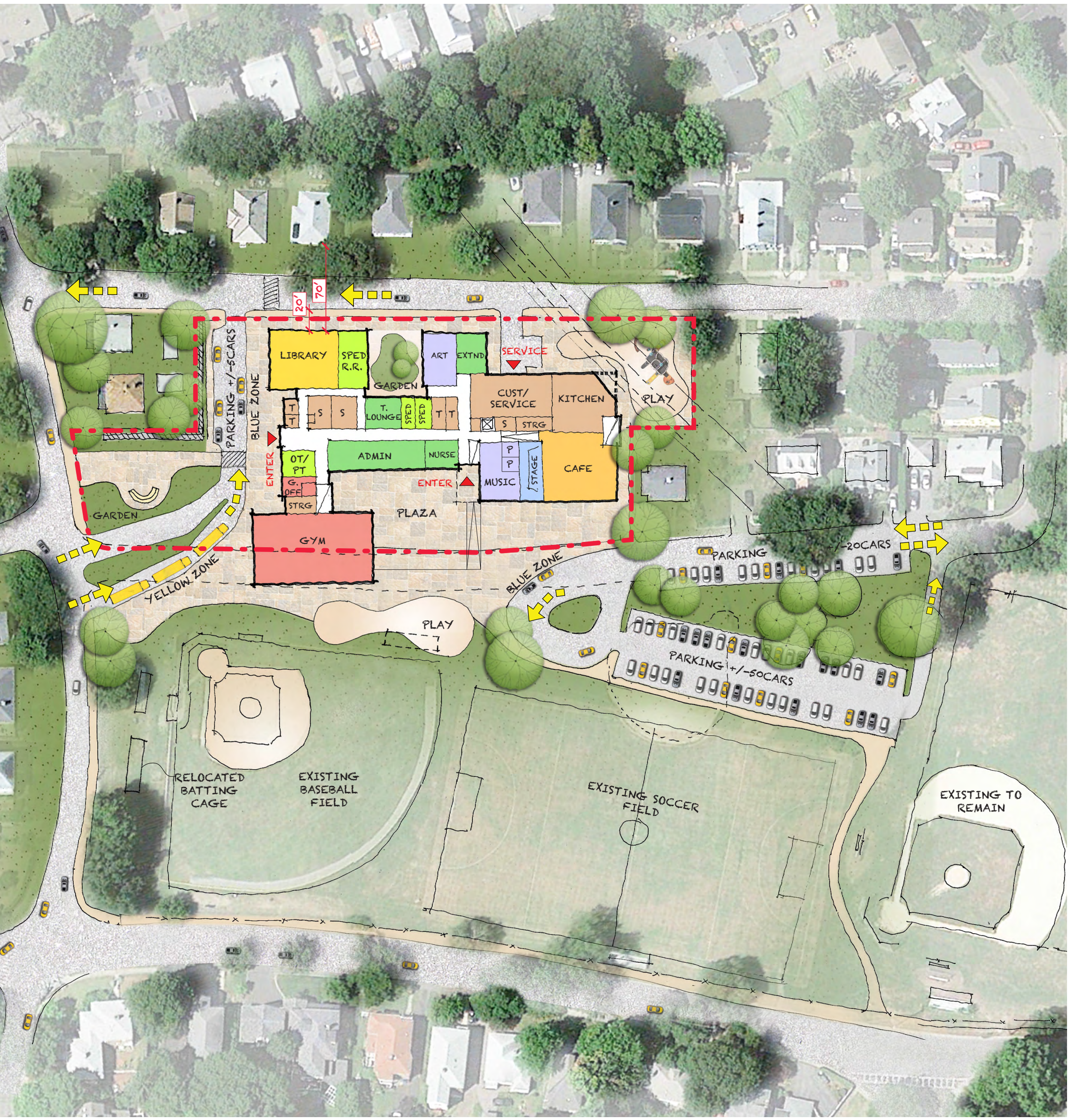


New Construction | B.4

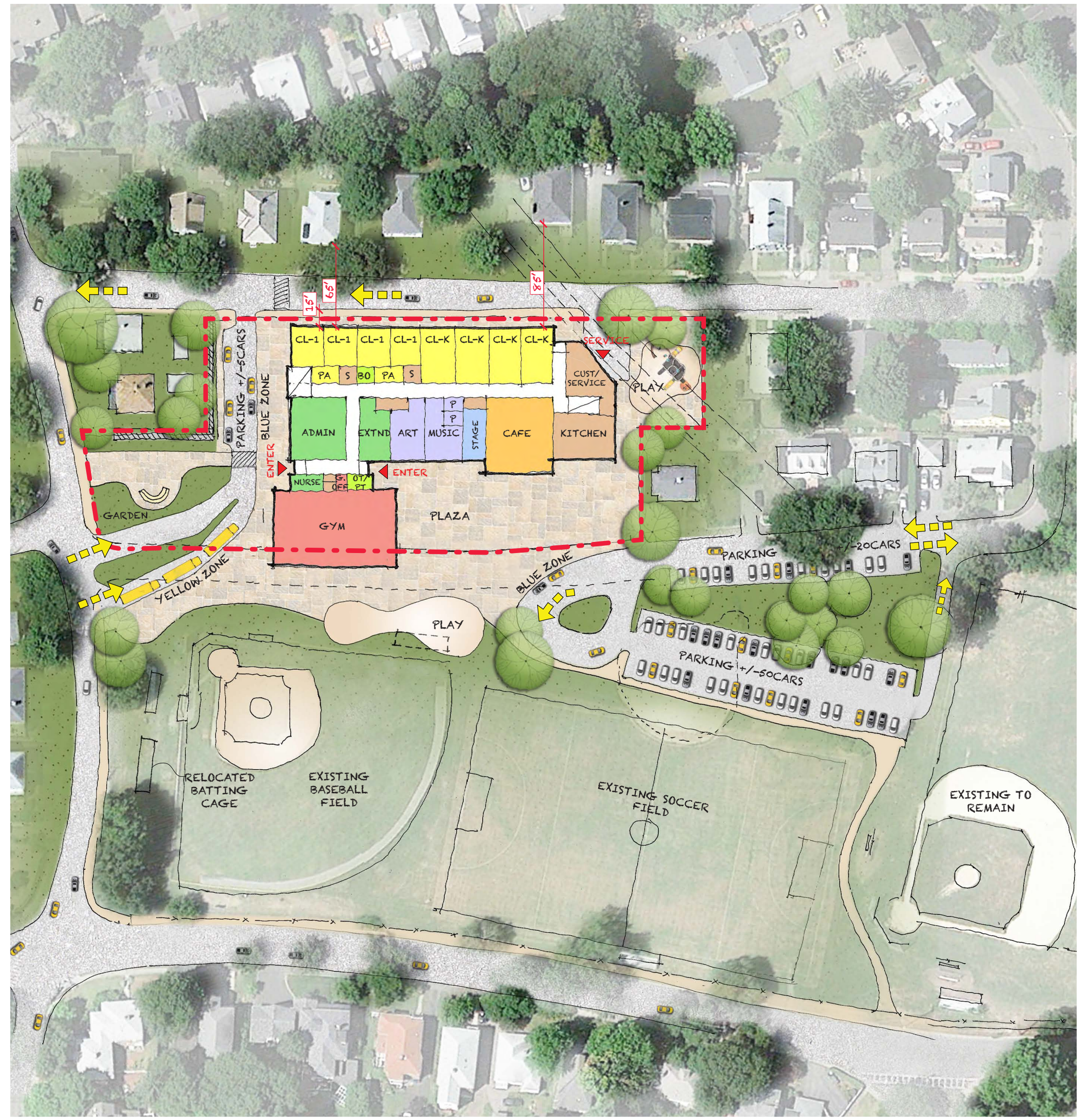
View from Cabot Park



A.4a and B.4 Overview



Renovation / Addition | Option A.4a



New Construction | Option B.4

Plan Overview



Renovation Addition I A.4a

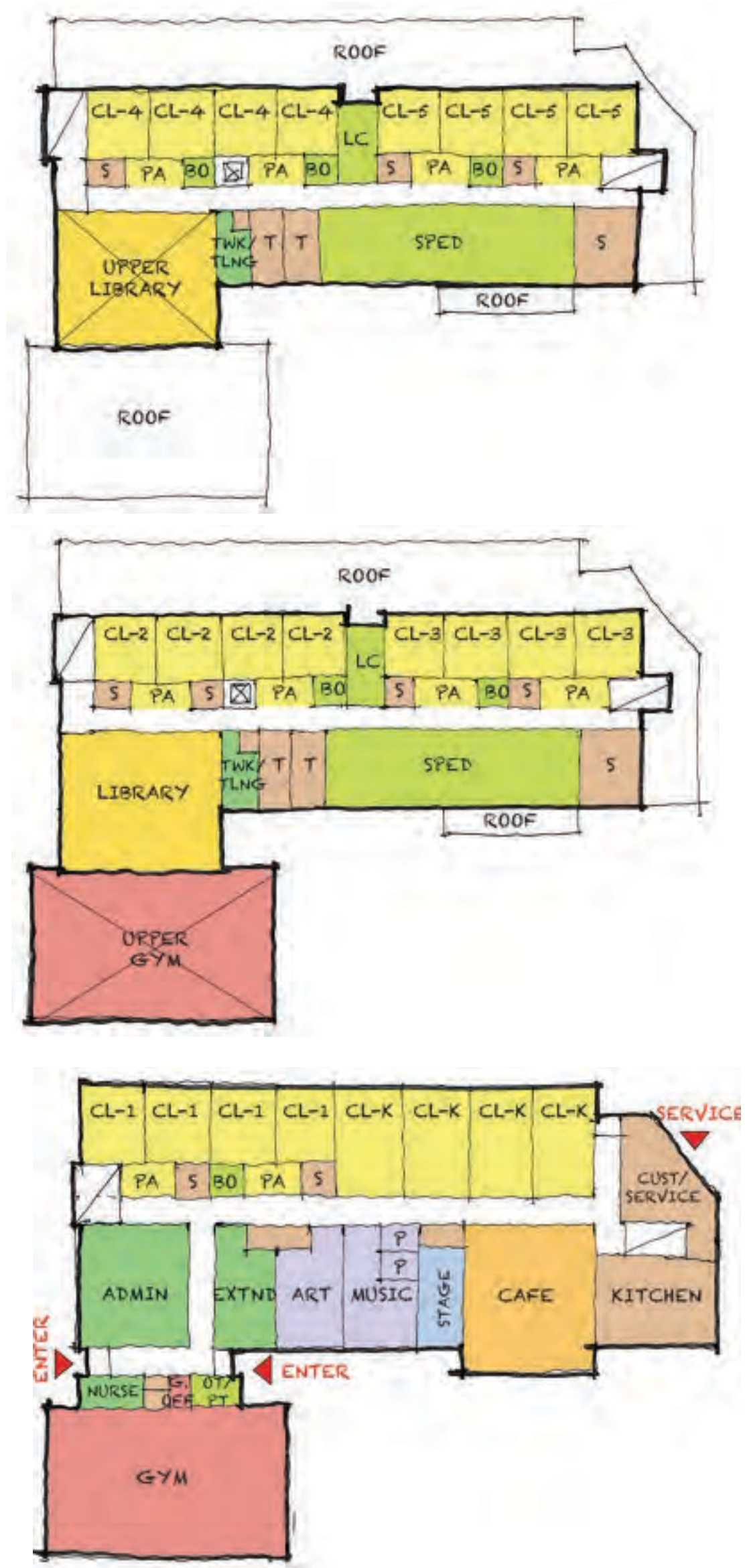


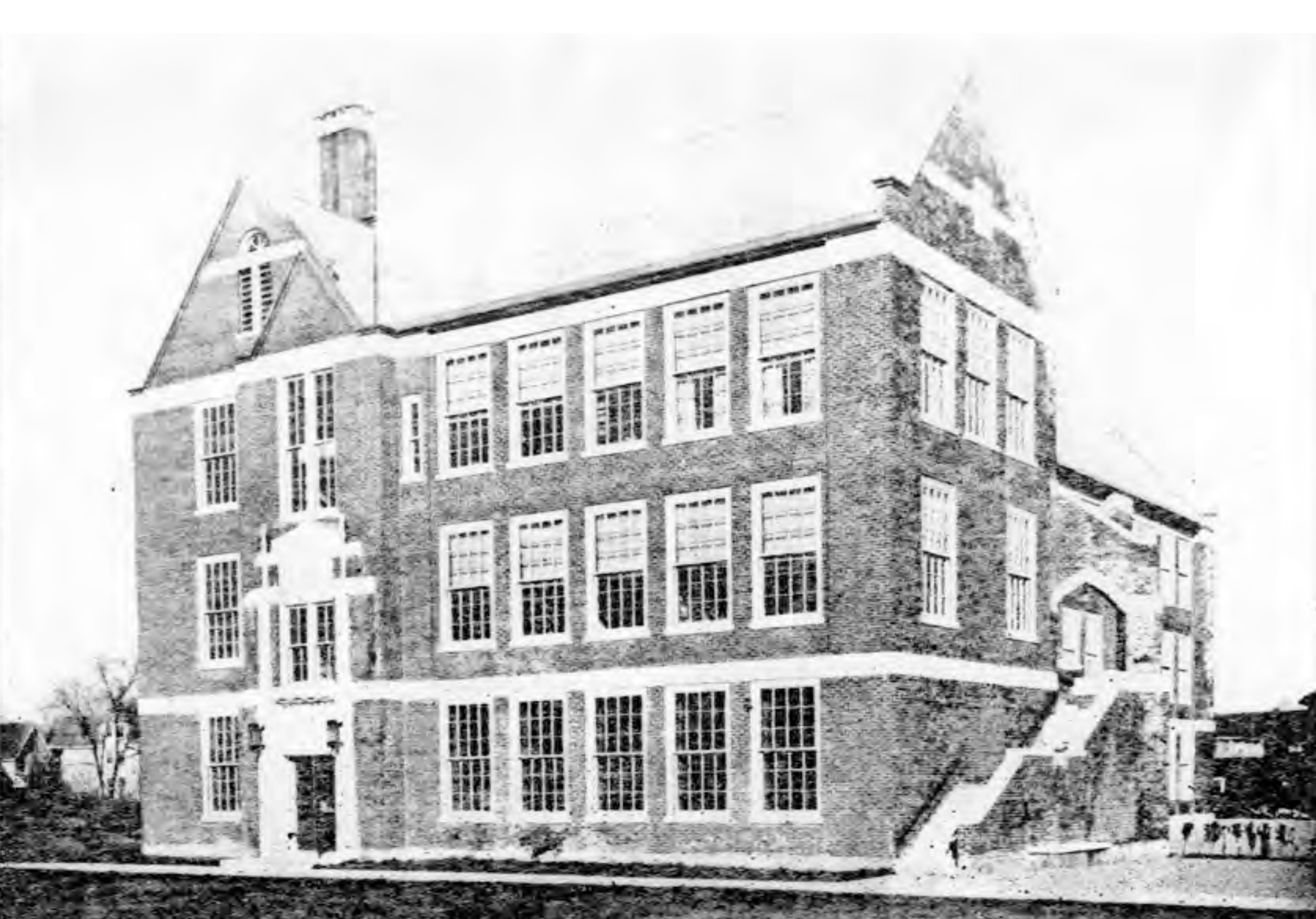
3RD FLOOR

2ND FLOOR

1ST FLOOR

New Construction I B.4



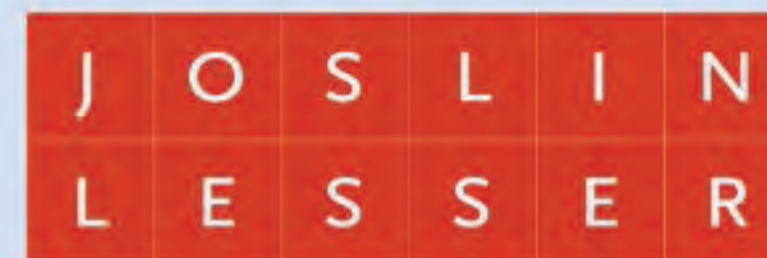


CSBC / DRC Meeting

May 07, 2015



Cabot School



DiNisco Design
PARTNERSHIP